

Item #: 178ZUC27FHC Project: \_\_\_\_\_

Qty: \_\_\_\_\_ Date: \_\_\_\_\_ Approval: \_\_\_\_\_

## Avantco ZUC-27F-HC 27" Front Breathing Undercounter Freezer

Item #178ZUC27FHC



### Technical Data

Width	27 Inches
Depth	29 1/2 Inches
Height	35 3/16 Inches
Power Cord Length	98 7/16 Inches
Interior Width	22 3/8 Inches
Interior Depth	19 13/16 Inches
Interior Height	23 1/2 Inches
Work Surface Height	35 3/16 Inches
Amps	3.6 Amps
Hertz	60 Hz

### Features

- Front breathing design provides exceptional airflow
- Bright LED interior lighting
- Easy-to-read digital temperature controller and auto-defrost function
- Stainless steel exterior and interior; foamed-in-place polyurethane insulation
- R-290 refrigerant; 115V; 1/5 hp

### Certifications



5-15P



ETL, US & Canada

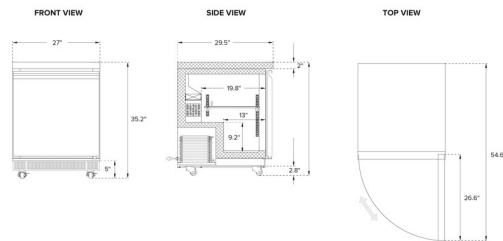
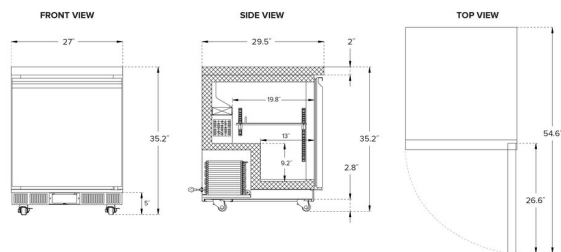


ETL Sanitation

## Technical Data

Phase	1 Phase
Voltage	115 Volts
Wattage	235 Watts
Access Type	Doors
BTU (LBP)	880 BTU
Capacity	5.4 cu. ft.
Capacity (per Shelf)	88 lb.
Casters	With Casters
Compressor Location	Rear Mounted
Compressor Style	Front Breathing
Construction	Stainless Steel
Door Style	Swing
Door Type	Solid
Features	Automatic Electric Defrost LED Lighting Removable Magnetic Door Gaskets Self-Closing Doors
Hinge Location	Right
Horsepower	1/5 hp
Number of Doors	1 Doors
Number of Shelves	1 Shelf
Plug Type	NEMA 5-15P
Refrigerant Type	R-290
Shelf Material	Epoxy-Coated Steel
Starting Amps	10.8 Amps
Starting Wattage	705 Watts
Style	Counter Height
Temperature Range	-8 - 0 Degrees F
Type	Freezers Undercounter Freezers

## Plan View





## Notes & Details

Make cold food storage as convenient as possible with this Avantco undercounter freezer. With a spacious refrigerated portion readily accessible through its door, the unit opens up to a shelf to help you organize your ingredients and best utilize the 5.4 cu. ft. interior. Plus, because it accommodates up to 88 lb., the epoxy-coated steel shelf is well equipped for holding heavy bulk ingredients, from frozen broccoli and cauliflower to frozen pork chops.

The need for extra clearance is eliminated due to the convenient front-breathing design, which allows the back and sides of the unit to be placed directly against a wall. This design provides exceptional airflow and helps to save space in your establishment. The self-closing and stay-open solid door allows users to load the unit quickly and easily after a delivery, while the recessed door handle and magnetic door gaskets further expedite the loading process. Plus, the bright LED interior lighting allows users to find what they're looking for with ease.

This corrosion-resistant unit is designed for outstanding durability to ensure that it withstands tough, busy kitchen environments. It features a 430 type stainless steel exterior, which provides both strength and a smooth, sleek appearance. The interior, made with 304 type stainless steel, also offers the durability necessary for heavy, regular use. Because of its undercounter design, the unit effortlessly adds refrigerated storage space without requiring space devoted solely to its footprint. This unit includes casters for easy mobility.

This freezer ensures optimal performance by operating with a 1/5 hp refrigeration system that circulates R-290 hydrocarbon refrigerant to maintain temperatures from -8 to 0 degrees Fahrenheit. R-290 refrigerant has an ozone depletion potential (ODP) of 0 and a global warming potential (GWP) of 3. The foamed-in-place polyurethane insulation helps to retain cold temperatures, which ensures that all food held in the unit remains at food safe temperatures and ready for preparation or direct service to customers!

Operation of the freezer is easy, thanks to its special features. Monitor it by consulting the interior wall-mounted thermometer, and use the auto-defrost feature on the pre-programmed digital controller to maintain the refrigerator in tip-top shape. The controller's audible alarms alert you to temperatures too high or low, extended door opening, and to clean the unit's condenser. This undercounter unit requires a 115V electrical connection for operation.

**⚠ WARNING:** This product can expose you to chemicals including lead, which are known to the State of California to cause cancer and birth defects or other reproductive harm. For more information, go to [www.p65warnings.ca.gov](http://www.p65warnings.ca.gov).