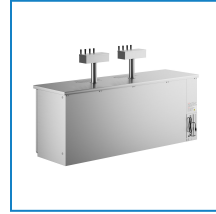


Item #: 178UDD4S8 Project: _____

Qty: _____ Date: _____ Approval: _____

Avantco UDD-4-HC-S (2) Four Tap Kegerator Beer Dispenser - Stainless Steel, (4) 1/2 Keg Capacity

Item #178UDD4S8



Technical Data

Width	90 1/4 Inches
Depth	27 3/4 Inches
Height	35 5/8 Inches
Power Cord Length	108 Inches
Interior Width	77 3/4 Inches
Interior Depth	21 7/8 Inches
Nominal Depth	Standard
Faucet Height	10 1/4 Inches
Interior Height	30 1/2 Inches
Tap Tower Height	16 Inches

Features

- 4 shelves included for optional bottle and can storage for increased versatility
- (2) 4-tap towers with a 10 1/4" faucet height
- Energy efficient LED interior lighting
- Includes (8) "u0022D"u0022 system couplers and keg mats
- 115V; 1/4 hp compressor; R290 refrigerant

Certifications



ETL, US



5-15P

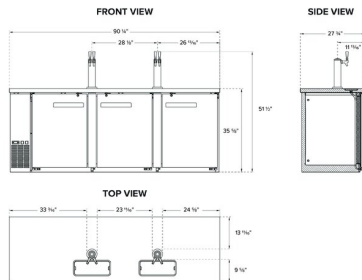


ETL Sanitation

Technical Data

Tap Tower Diameter	3 Inches
Amps	4.1 Amps
Voltage	115 Volts
Wattage	385 Watts
Compressor Location	Left Side Mounted
Door Type	Solid
Exterior Finish	Stainless Steel
Features	LED Lighting Removable Magnetic Door Gaskets
Horsepower	1/4 hp
Number of Doors	3 Doors
Number of Kegs	4 Kegs
Number of Shelves	4 Shelves
Number of Taps	8+ Taps
Plug Type	NEMA 5-15P
Refrigerant Type	R-290
Starting Amps	12.3 Amps
Starting Wattage	1155 Watts
Style	1/2 Barrel
Top Capacity	353 lb.
Type	Kegeators / Beer Dispensers

Plan View



Notes & Details

Whether you operate a pub, banquet hall, catering service, or facilitate other special events, this Avantco UDD-60-HC-S (2) triple tap beer dispenser is an excellent way to offer crisp, refreshing draft beer to your guests without investing in a complex built-in tap system! This unit features (2) triple tap towers with a 10 1/4" faucet height that allows you to easily fill pint glasses and pitchers with local microbrews, international macrobrews, and everything in between. It holds (2) 1/2 kegs so you can stock up on one brew or offer customers a selection to choose from, and it even comes with (2) 18 1/8" x 23 5/8" shelves for optional bottle or can storage while concealing the product behind 2 solid doors. The doors themselves are not only self-closing to prevent potential energy loss, but also lock to prevent theft during off hours. This unit is equipped with knockout plugs to install external CO2 lines.

Unlike many competitive beer dispensers, this model ships with 8 couplers so that you can tap kegs right out of the box! This commercial kegeator features a sleek stainless steel finish and a 1 1/2" thick stainless steel top that is both durable and extremely simple to clean, while a built-in drip tray further expedites end-of-day cleaning. It has a 1/4 hp refrigeration system that circulates R-290 hydrocarbon refrigerant. R290 refrigerant has an ozone depletion potential (ODP) of 0 and a global warming potential (GWP) of 3. A 115V electrical connection is required for operation. For long-lasting quality assurance and peace of mind, this unit also comes with a 2 year Parts and Labor Warranty.

⚠ WARNING: This product can expose you to chemicals including lead, which are known to the State of California to cause cancer and birth defects or other reproductive harm. For more information, go to www.p65warnings.ca.gov.