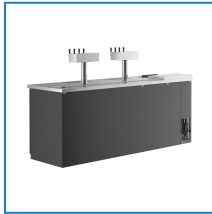


Item #: 178UDD4CT8 Project: _____

Qty: _____ Date: _____ Approval: _____

Avantco UDD-4-CT-8 Black Kegerator / Beer Dispenser with (2) Quadruple Tap Tower and Club Top - (4) 1/2 Keg Capacity

Item #178UDD4CT8



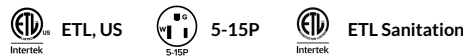
Technical Data

Width	90 5/16 Inches
Depth	27 3/4 Inches
Height	37 3/16 Inches
Power Cord Length	108 Inches
Club Top Shelf Width	8 1/2 Inches
Interior Width	77 3/4 Inches
Club Top Shelf Depth	21 1/4 Inches
Interior Depth	21 7/8 Inches
Nominal Depth	Standard
Faucet Height	11 Inches

Features

- 4 shelves included for optional bottle or can storage for increased versatility
- 3 self-closing, locking doors to protect inventory
- Club top provides an extra storage compartment
- Includes (2) quadruple tap towers and (8) "D" system couplers
- 115V; 1/4 hp; R-290 refrigerant

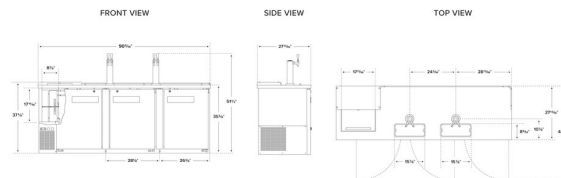
Certifications



Technical Data

Interior Height	30 1/2 Inches
Tap Tower Height	17 Inches
Tap Tower Diameter	3 Inches
Amps	4.8 Amps
Hertz	60 Hz
Phase	1 Phase
Voltage	115 Volts
Wattage	480 Watts
BTU (LBP)	910 BTU
Capacity (per Shelf)	88 lb.
Compressor Location	Left Side Mounted
Construction	Stainless Steel
Door Style	Swing
Door Type	Solid
Exterior Finish	Black
Features	Removable Magnetic Door Gaskets Self-Closing Doors
Horsepower	1/4 hp
Maximum Ambient Temperature	90 Degrees F
Number of 12 oz. Bottles	320 Bottles
Number of 12 oz. Cans	432 Cans
Number of Doors	3 Doors
Number of Kegs	4 Kegs
Number of Shelves	4 Shelves
Number of Taps	8+ Taps
Plug Type	NEMA 5-15P
Refrigerant Type	R-290
Stainless Steel Type	Type 304
Starting Amps	14.4 Amps
Starting Wattage	1440 Watts
Style	1/2 Barrel
Type	Club Top Beer Dispensers

Plan View





Notes & Details

Whether you operate a pub, banquet hall, catering service, or facilitate other special events, this Avantco UDD-4-CT-8 black kegerator / beer dispenser with (2) quadruple tap tower and club top is an excellent way to offer crisp, refreshing draft beer to your guests without investing in a complex built-in tap system! This unit features (2) stainless steel quadruple tap towers with an 11" faucet height that allows you to easily fill pint glasses and pitchers with local microbrews, international macrobrews, and everything in between. The chrome-plated brass faucet design ensures a polished look and maximum durability. It also features a club top, which provides an extra storage compartment for chilling approximately 15-18 additional beer bottles or other single-serve bottles.

This dispenser holds (4) 1/2 kegs so you can stock up on one brew or offer customers a selection to choose from. It even comes with 4 shelves for optional bottle or can storage while concealing the product behind 3 solid doors. The doors themselves are not only self-closing to prevent potential energy loss, but also lock to prevent theft during off hours. This unit is equipped with knockout plugs to install external CO2 lines.

Unlike many competitive beer dispensers, this model ships with "D" system couplers so that you can tap kegs right out of the box! This commercial kegerator features a black coated steel exterior and a 304 type stainless steel interior that is both durable and easy to clean, while a built-in drip tray further expedites end-of-day cleaning. It has a 1/4 hp refrigeration system that circulates R-290 hydrocarbon refrigerant. R-290 refrigerant has an ozone depletion potential (ODP) of 0 and a global warming potential (GWP) of 3. A 115V electrical connection is required for operation.

⚠ WARNING: This product can expose you to chemicals including lead, which are known to the State of California to cause cancer and birth defects or other reproductive harm. For more information, go to www.p65warnings.ca.gov.