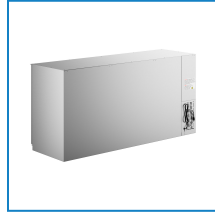


Item #: 178UBB72GTS Project: _____

Qty: _____ Date: _____ Approval: _____

Avantco UBB-72-GT-S 73" Stainless Steel Underbar Height Narrow Solid Door Back Bar Refrigerator with Galvanized Top and LED Lighting

Item #178UBB72GTS



Technical Data

Width	72 3/4 Inches
Depth	24 7/16 Inches
Height	34 13/16 Inches
Power Cord Length	106 Inches
Interior Width	60 1/8 Inches
Left Door Opening Width	17 13/16 Inches
Middle Door Opening Width	17 13/16 Inches
Packaging Width	75 1/4 Inches
Right Door Opening Width	17 13/16 Inches
Shelf Width	19 - 20 1/2 Inches

Features

- Galvanized steel top with stainless steel interior and stainless steel exterior
- LED interior lighting
- Six adjustable epoxy-coated steel shelves can be removed to fit three 1/2 kegs
- Preprogrammed digital temperature controls featuring auto-defrost function for easy setup and mainte
- 115V; 3/7 hp; R290 refrigerant

Certifications



ETL, US



5-15P

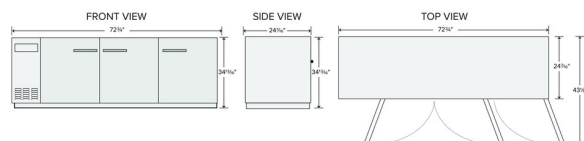


ETL Sanitation

Technical Data

Interior Depth	18 1/2 Inches
Nominal Depth	Narrow
Packaging Depth	27 1/2 Inches
Shelf Depth	18 1/8 - 18 1/4 Inches
Interior Height	29 Inches
Packaging Height	41 3/4 Inches
Amps	3.5 Amps
Hertz	60 Hz
Phase	1 Phase
Voltage	115 Volts
Wattage	325 Watts
Access Type	Doors
BTU (LBP)	974 BTU
Capacity	(3) 1/2 Kegs 21.6 cu. ft.
Capacity (per Shelf)	88 lb.
Compressor Location	Side Mounted
Countertop Type	Galvanized Steel
Door Style	Swing
Door Type	Solid
Exterior Finish	Stainless Steel
Features	Automatic Electric Defrost Digital Temperature Controller Food Rated LED Lighting Locking Doors Removable Magnetic Door Gaskets
Horsepower	3/7 hp
Insulation Material	Polyurethane Foam
Material	Stainless Steel
Maximum Ambient Temperature	90 Degrees F
Net Weight	331 lb.
Number of 12 oz. Bottles	308 Bottles
Number of 12 oz. Cans	252 Cans
Number of Doors	3 Doors
Number of Kegs	3 Kegs
Number of Shelves	6 Shelves
Plug Type	NEMA 5-15P
Refrigerant Capacity	2.5 oz.
Refrigerant Type	R-290
Shelf Material	Epoxy-Coated Steel
Starting Amps	10.5 Amps
Starting Wattage	975 Watts
Temperature Range	33 - 40 Degrees F
Top Capacity	353 lb.
Top Type	Below Counter

Plan View



Notes & Details

Optimize the space behind your bar by adding refrigerated storage with this Avantco UBB-72S-GT-S 73" stainless steel underbar height narrow sliding glass door back bar refrigerator with LED lighting! Conveniently store a variety of bottles behind the bar so that they're ready to serve at all times, and gain 21.6 cu. ft. of refrigerated storage space for your most popular brews, ales, ciders, and other beverages. Its narrow design makes it more compact than similar units, making it ideal for operations that are tight on space.

The galvanized top design is ideal for low height, built-in bars with existing cabinetry. Providing 21.6 cu. ft. of interior storage space, the unit fits up to (3) 1/2 kegs and houses (6) 17 5/8" x 18 1/8" shelves that each accommodate up to 88 lb. The epoxy-coated steel shelves in this food-rated unit are perfect for storing and organizing heavy bulk ingredients for your bar service, from bottles of ale and beer to fresh fruit for mixed drinks and garnishes. The interior, made of strong 304 type stainless steel, is accessible through 3 sliding glass doors, taking up less precious space behind the bar and making it easy to grab drinks and garnishes quickly. This unit features easy-to-use digital temperature controls to make setting and changing the temperature simple. In addition, this refrigerator has interior LED lighting to maximize product visibility. Even if your bar area is dimly lit, bartenders and servers will have no trouble finding the drinks and garnishes they need. For overall durability, the unit's exterior is made with sleek stainless steel.

This back bar refrigerator ensures optimal performance by operating with a 3/7 hp refrigeration system that circulates R290 hydrocarbon refrigerant to maintain temperatures from 33-40 degrees Fahrenheit. R290 refrigerant has an ozone depletion potential (ODP) of 0 and a global warming potential (GWP) of 3, making it an energy-efficient choice for your business. The foamed-in-place polyurethane insulation helps to maintain internal temperatures and adds rigidity to the body's structure. This unit requires a 115V electrical connection for operation and even comes with adjustable feet for simple, convenient leveling. For long-lasting quality assurance and peace of mind, this unit also comes with a 2 year Parts and Labor Warranty.

⚠ WARNING: This product can expose you to chemicals including lead, which are known to the State of California to cause cancer and birth defects or other reproductive harm. For more information, go to www.p65warnings.ca.gov.