

Item #: 178SSPT71C Project: \_\_\_\_\_

Qty: \_\_\_\_\_ Date: \_\_\_\_\_ Approval: \_\_\_\_\_

## Avantco SS-PT-71-C 70" 3 Door Stainless Steel Cutting Top Refrigerated Sandwich Prep Table with Extra Deep Cutting Board

Item #178SSPT71C



### Technical Data

Width	70 3/8 Inches
Depth	31 Inches
Height	42 3/8 Inches
Power Cord Length	84 Inches
Cutting Board Width	70 3/8 Inches
Interior Width	66 1/2 Inches
Nominal Width	72 Inches
Cutting Board Depth	15 Inches
Interior Depth	23 3/4 Inches
Interior Height	23 1/2 Inches

### Features

- Top accommodates (18) 1/6 size, 6" deep food pans (sold separately)
- Removable 15" extra deep, 3/4" thick cutting board provides 3 1/2" more depth than standard board
- Digital control with auto defrost
- Stainless steel exterior and interior; foamed-in-place polyurethane insulation
- 115V; R290 refrigerant; 2/3 hp

### Certifications



5-15P



ETL Sanitation

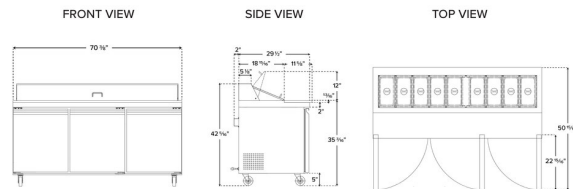


ETL, US & Canada

## Technical Data

Work Surface Height	35 1/4 Inches
Amps	7.8 Amps
Hertz	60 Hz
Phase	1 Phase
Voltage	115 Volts
Wattage	780 Watts
1/6 Size Pan Capacity	18 Pans
Access Type	Doors
Capacity	18 cu. ft.
Capacity (per Shelf)	90 lb.
Casters	With Casters
Color	Silver
Compressor Location	Rear Mounted
Compressor Style	Side / Rear Breathing
Construction	Stainless Steel
Cutting Board Thickness	3/4 Inch
Door Style	Swing
Door Type	Solid
Exterior Material	Stainless Steel
Features	Removable Magnetic Door Gaskets
Hinge Location	Left Right
Horsepower	2/3 hp
Interior Material	Stainless Steel
Number of Doors	3 Doors
Number of Shelves	3 Shelves
Plug Type	NEMA 5-15P
Refrigerant Type	R-290
Starting Amps	23.4 Amps
Starting Wattage	2340 Watts
Style	Counter Height
Temperature Range	33 - 40 Degrees F
Top Type	Cutting Top Mega Top Standard Top
Total BTU	2080 BTU
Type	Prep Refrigeration

## Plan View



Base model shown. Height and depth may vary depending on options.



## Notes & Details

Optimize your back-of-house operations with this Avantco SS-PT-71-C 70" 3 door stainless steel refrigerated sandwich prep table, and keep up with customer demands. Whether used in a university, sub shop, or hospital, the unit is sure to help streamline the sandwich prep process with its convenient features and capacity. Its top accommodates up to (18) 1/6 size food pans up to 6" deep (sold separately). These are great for holding common sandwich or salad toppings, from eggs and cheese to green pepper or ham. Plus, a lift-up lid encloses the top to maintain safe temperatures. A full-length cutting board, which is 15" deep, is mounted to the table surface, providing maximum space for slicing ingredients and assembling orders.

Beneath the prep top, additional refrigerated storage space is perfect for storing back-up ingredients, such as deli meat and cheese, as well as less common toppings. Three epoxy-coated shelves are included and can each accommodate up to 90 lb. of weight, helping to organize your assorted supplies. At the end of the day, take advantage of the casters and roll the unit aside to thoroughly clean the area.

High quality performance is made possible by the unit's 2/3 hp refrigeration system, which maintains temperatures between 33 and 40 degrees Fahrenheit. It does this by circulating R290 refrigerant. This specialized refrigerant has an ozone depletion potential (ODP) of 0 and a global warming potential (GWP) of 3.

A set of 4" casters makes it easy to move when needed for cleaning and maintenance. The construction of this unit is designed with commercial use in mind. It features a 430 type stainless steel exterior and 304 type stainless steel interior, which are fortified with foamed-in-place polyurethane insulation for proper temperature retention. For operation, the prep table requires a 115V electrical connection.

**⚠ WARNING:** This product can expose you to chemicals including lead, which are known to the State of California to cause cancer and birth defects or other reproductive harm. For more information, go to [www.p65warnings.ca.gov](http://www.p65warnings.ca.gov).