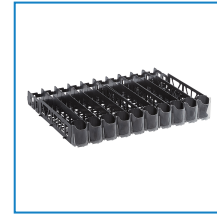
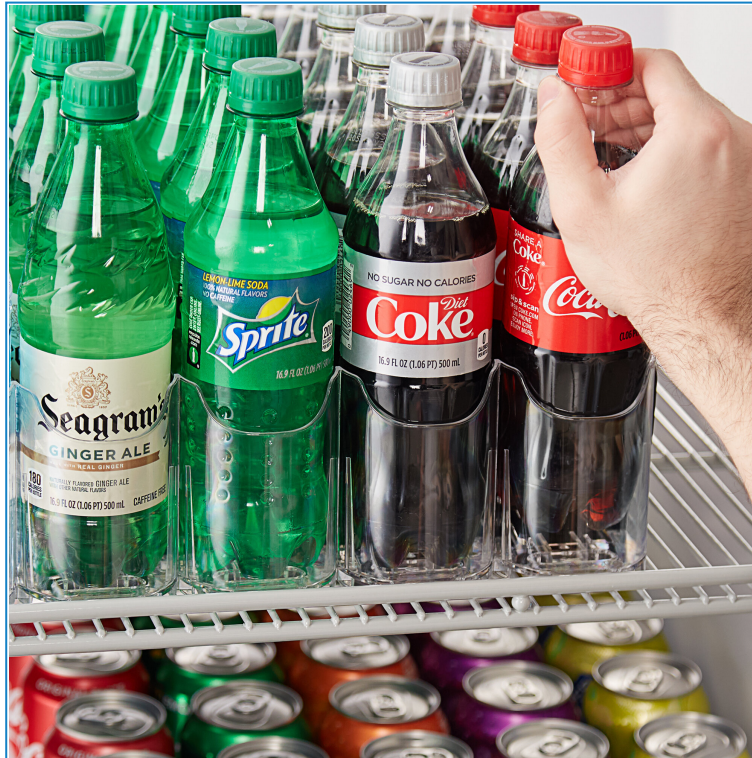


Avantco 178FST10LN12 10 Lane Pusher Glide Bottle Organizer for 12 oz. and 16 oz. Bottles / Cans

Item #178FST10LN12



Technical Data

Width	28 3/8 Inches
Depth	22 Inches
Lane Width	2 11/16 Inches
Color	Black
Container Size	12 Ounces
Features	Made in America
Material	Plastic
Number of Lanes	10 Lanes
Shape	Rectangle

Features

- Holds cans or bottles, 12 oz. and 16 oz. in size
- Pusher system keeps bottles at the front of the shelf for easy access
- Sits directly on flat shelves in cold vaults, coolers, or merchandising racks
- May be cut down to fit specific display applications
- Internal slip agent for long-lasting performance in your business

Certifications



Made in America



Technical Data

Style	Adjustable For Single Shelf
Type	Spring Fed Organizers

Notes & Details

Keep your single serve bottles and cans organized and easy to reach with this Avantco 10 lane bottle organizer for 12 oz. and 16 oz. bottles or cans. This model holds plenty of cans or bottles to keep your customers hydrated, and uses a pusher feed system to keep them near the front of the shelf for easy access.

The spring loaded pushers, clear front, and tall side walls make sure your product is always shown off to its best advantage. It is designed specifically for use with flat, non-angled shelves. This organizer sits directly on existing shelves in cold vaults, coolers, or merchandising racks.

This organizer features a modular track design and several break points that allow it to be cut down to fit many different shelf sizes. It is made of durable plastic and features a special slip agent that ensures long-lasting performance of the glides in your merchandising application.

⚠ WARNING: This product can expose you to chemicals including lead, which are known to the State of California to cause cancer, birth defects, or other reproductive harm. For more information, go to www.p65warnings.ca.gov.