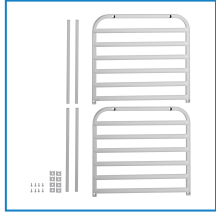
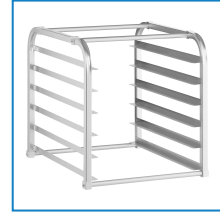


## Avantco 178BUNPANSHRT 6 Pan Aluminum End Load Sheet / Bun Pan Rack - Unassembled

Item #178BUNPANSHRT



### Technical Data

Width	20 1/2 Inches
Depth	23 Inches
Height	22 Inches
Assembled	Assembly Required
Capacity	180 lb.
Color	Silver
Features	Freezer Safe NSF Listed
Individual Shelf Capacity	30 lb.
Loading Style	End Load

### Features

- Tubular aluminum frame for lightweight durability
- Holds up to 6 full-size pans
- 3" of space between extruded aluminum pan slides
- Excellent corrosion resistance
- 30 lb. individual shelf capacity; 180 lb. total

### Certifications



NSF Listed

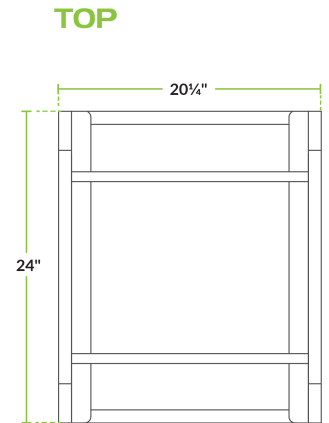
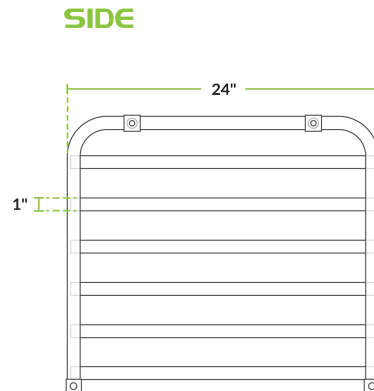
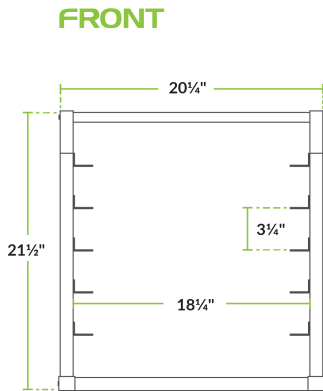
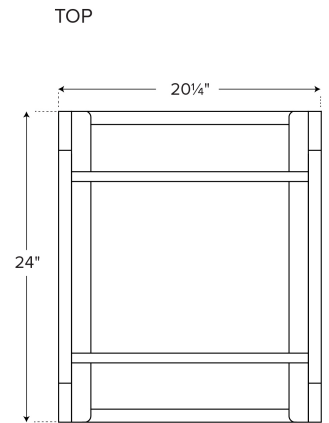
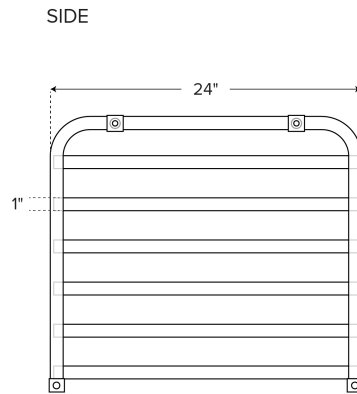
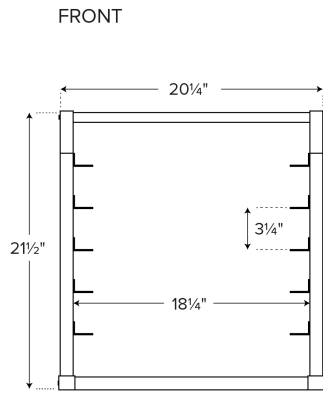


Freezer Safe

## Technical Data

Material	Aluminum
Number of Shelves	6 Shelves
Pan Capacity	6 Pans
Pan Type	Full Size Sheet Pans
Rack Style	Bun Pan
Type	Sheet Pan Racks
Usage	Refrigerator

## Plan View





## Notes & Details

Maximize the potential of your Avantco unit with this Avantco 178BUNPANSHRT 6 pan end load sheet / bun pan rack! Specifically designed to fit inside compatible Avantco prep, undercounter, and worktop refrigeration units and capable of holding 6 sheet pans full of product, this rack makes an excellent addition to the refrigerated or frozen storage areas in your bakery, restaurant, or catering kitchen. It can also work with reach-in units.

Thanks to its durable aluminum construction with 1" extruded tube frames, this rack is built to last. It features 3" of space between each extruded aluminum pan slide to allow for sufficient airflow. To provide you with the best possible savings on shipping costs, this unit ships unassembled.

**⚠ WARNING:** This product can expose you to chemicals including lead, which are known to the State of California to cause cancer, birth defects, or other reproductive harm. For more information, go to [www.p65warnings.ca.gov](http://www.p65warnings.ca.gov).