

Item #: 178AWT60FHC Project: _____

Qty: _____ Date: _____ Approval: _____

Avantco AWT-60F-HC 60" Worktop Freezer with 3 1/2" Backsplash

Item #178AWT60FHC



Technical Data

Width	60 3/16 Inches
Depth	29 1/2 Inches
Height	38 3/4 Inches
Interior Width	55 5/8 Inches
Left Door Opening Width	25 11/16 Inches
Right Door Opening Width	25 11/16 Inches
Shelf Width	27 1/4 Inches
Interior Depth	23 1/2 Inches
Shelf Depth	17 Inches
Backsplash Height	3 1/2 Inches

Features

- 430 type stainless steel exterior and aluminum interior with 304 stainless steel floor
- Foamed-in-place CFC- and HCFC-free polyurethane insulation increases energy efficiency
- Self-closing and stay-open door features for easy loading and unloading of product
- Double doors feature easy-to-use recessed handles for quick interior access
- Maintains cold temperatures from -7 to 0 degrees Fahrenheit; 115V; 2/3 hp

Certifications



5-15P



ETL Sanitation



ETL, US

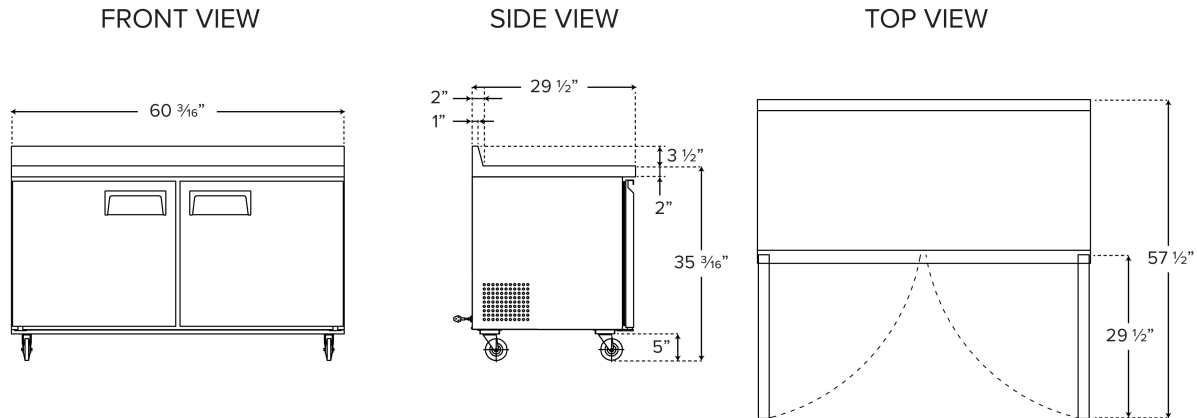


Avantco Refrigeration

Technical Data

Interior Height	19 13/16 Inches
Work Surface Height	35 1/4 Inches
Caster Diameter	5 Inches
Amps	4.5 Amps
Hertz	60 Hertz
Phase	1 Phase
Voltage	115 Volts
Wattage	345 Watts
Access Type	Doors
Backsplash	With Backsplash
BTU (LBP)	1991 BTU
Capacity	15 cu. ft.
Casters	With Casters
Compressor Location	Rear Mounted
Compressor Style	Side / Rear Breathing
Construction	Stainless Steel and Aluminum
Door Style	Swing
Door Type	Solid
Features	Casters Removable Magnetic Door Gaskets Self-Closing Doors Stay-Open Doors
Horsepower	2/3 HP
Individual Shelf Capacity	88 lb.
Maximum Ambient Temperature	100 Degrees F
Number of Doors	2 Doors
Number of Shelves	2 Shelves
Plug Type	NEMA 5-15P
Refrigerant Capacity	3.9 oz.
Refrigerant Type	R-290
Shelf Material	Plastic Coated Steel
Starting Amps	13.5 Amps
Starting Wattage	1035 Watts
Temperature Range	-7 - 0 Degrees F
Top Capacity	441 lb.

Plan View



Notes & Details

Make food preparation as convenient as possible with the Avantco AWT-60F-HC 60" worktop freezer. With a spacious stainless steel worktop surface for slicing, dicing, assembling, mixing, and other food prep tasks, the unit features a $3 \frac{1}{2}$ " backsplash for wall protection and freezer storage space below. The freezer portion is readily accessible through the doors, which open up to shelves that help you organize your ingredients and best utilize the roomy interior. Plus, because they accommodate up to 88 lb. each, the epoxy coated steel shelves well equipped for holding heavy bulk ingredients.

This unit is designed for outstanding durability to ensure that it withstands tough, busy kitchens with ease. It features a 430 type stainless steel exterior, which provides both strength and a smooth, sleek appearance. The painted aluminum interior with a 304 stainless steel floor also offers the stability necessary for heavy, regular use.

This worktop freezer ensures optimal performance by operating with a $\frac{2}{3}$ hp refrigeration system that circulates R290 hydrocarbon refrigerant to maintain temperatures from -7 to 0 degree Fahrenheit. R290 refrigerant has an ozone depletion potential (ODP) of 0 and a global warming potential (GWP) of 3. The foamed-in-place polyurethane insulation helps to maintain interior temperatures.

Operation of the freezer is easy, thanks to a variety of special features, including an interior wall-mounted thermometer, auto-defrost, and pre-programmed digital controller. At the end of the day, take advantage of the casters and roll the unit aside to thoroughly clean the area. This worktop freezer requires a 115V electrical connection for operation.

⚠ WARNING: This product can expose you to chemicals including lead, which are known to the State of California to cause cancer and birth defects or other reproductive harm. For more information, go to www.p65warnings.ca.gov.