

Item #: 178AWT27FHC Project: \_\_\_\_\_

Qty: \_\_\_\_\_ Date: \_\_\_\_\_ Approval: \_\_\_\_\_

## Avantco AWT-27F-HC 27" Worktop Freezer with 3 1/2" Backsplash - 115V

Item #178AWT27FHC



### Technical Data

Width	27 Inches
Depth	29 1/2 Inches
Height	38 3/4 Inches
Power Cord Length	84 Inches
Interior Width	22 1/4 Inches
Shelf Width	21 7/8 Inches
Depth with Door Open	56 1/2 Inches
Interior Depth	22 7/8 Inches
Shelf Depth	17 3/4 Inches
Interior Height	23 1/2 Inches

### Features

- 430 type stainless steel exterior and aluminum interior with 304 stainless steel floor
- Foamed-in-place CFC- and HCFC-free polyurethane insulation increases energy efficiency
- Self-closing and stay-open door features for easy loading and unloading of product
- Door features easy-to-use recessed handle for quick interior access
- Maintains cold temperatures from -8 to -1 degrees Fahrenheit; 115V; 1/3 hp

### Certifications



ETL, US



5-15P

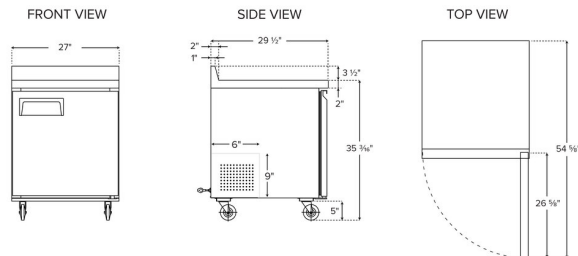


ETL Sanitation

## Technical Data

Work Surface Height	35 1/4 Inches
Amps	3.6 Amps
Hertz	60 Hz
Phase	1 Phase
Voltage	115 Volts
Wattage	235 Watts
Access Type	Doors
BTU (LBP)	881 BTU
Capacity	6.2 cu. ft.
Capacity (per Shelf)	88 lb.
Compressor Style	Side / Rear Breathing
Construction	Stainless Steel and Aluminum
Door Style	Swing
Door Type	Solid
Features	Automatic Electric Defrost Digital Temperature Controller Removable Magnetic Door Gaskets With Backsplash
Hinge Location	Right
Horsepower	1/3 hp
Insulation Material	Polyurethane Foam
Maximum Ambient Temperature	90 Degrees F
Net Weight	159 lb.
Number of Doors	1 Doors
Number of Shelves	1 Shelf
Plug Type	NEMA 5-15P
Refrigerant Capacity	2.3 oz.
Refrigerant Type	R-290
Style	Counter Height
Temperature Range	-8 - -1 Degrees F
Top Capacity	441 lb.

## Plan View





## Notes & Details

Make food preparation as convenient as possible with the Avantco AWT-27F-HC 27" worktop freezer. With a spacious stainless steel worktop surface for slicing, dicing, assembling, mixing, and other food prep tasks, the unit features a 3 1/2" backsplash for wall protection and freezer storage space below. The freezer portion is readily accessible through the door, which opens up to a shelf that helps you organize your ingredients and best utilize the roomy interior. Plus, because it accommodates up to 88 lb., the epoxy coated steel shelf is well equipped for holding heavy bulk ingredients.

This unit is designed for outstanding durability to ensure that it withstands tough, busy kitchens with ease. It features a 430 type stainless steel exterior, which provides both strength and a smooth, sleek appearance. The painted aluminum interior with a 304 stainless steel floor also offers the stability necessary for heavy, regular use.

This worktop freezer ensures optimal performance by operating with a 1/3 hp refrigeration system that circulates R290 hydrocarbon refrigerant to maintain temperatures from -8 to -1 degree Fahrenheit. R290 refrigerant has an ozone depletion potential (ODP) of 0 and a global warming potential (GWP) of 3. The foamed-in-place polyurethane insulation helps to maintain interior temperatures.

Operation of the freezer is easy, thanks to a variety of special features, including an interior wall-mounted thermometer, auto-defrost, and pre-programmed digital controller. At the end of the day, take advantage of the casters and roll the unit aside to thoroughly clean the area. This worktop freezer requires a 115V electrical connection for operation.

**⚠ WARNING:** This product can expose you to chemicals including lead, which are known to the State of California to cause cancer and birth defects or other reproductive harm. For more information, go to [www.p65warnings.ca.gov](http://www.p65warnings.ca.gov).