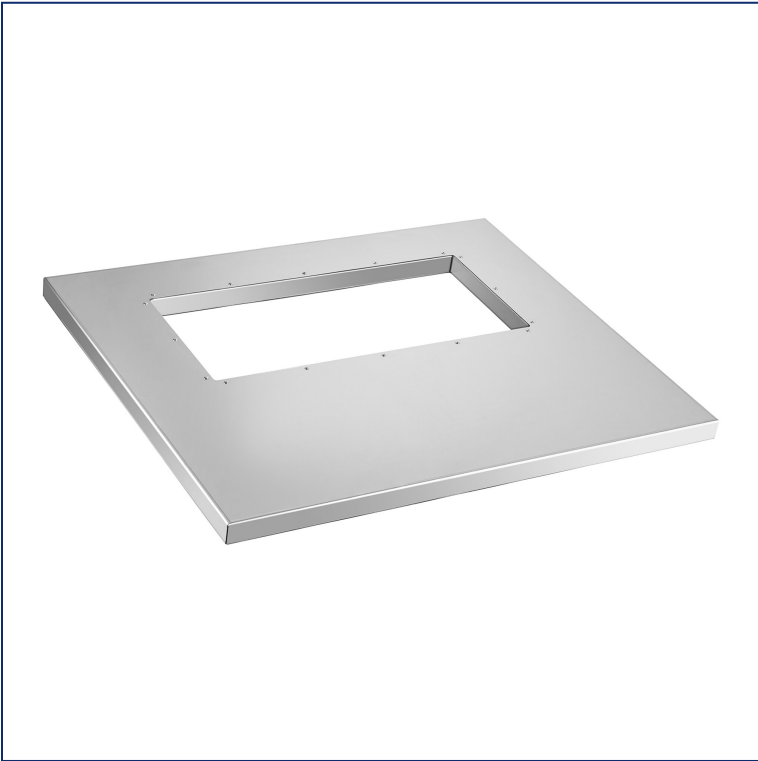


Item #: 194ADAP2230 Project: \_\_\_\_\_

Qty: \_\_\_\_\_ Date: \_\_\_\_\_ Approval: \_\_\_\_\_

## Avantco Ice 194ADAP2230 Adapter Kit for 22" Modular Machines on 30" Bins

Item #194ADAP2230



### Technical Data

Width	30 Inches
Type	Adapter Kits Mechanical Parts

### Features

- Securely mounts 22" ice machines on 30" ice bins (each sold separately)
- Compatible with Avantco models only
- Stacked units optimize space

### Notes & Details

Optimize your space with this Avantco Ice adapter kit. This kit enables you to mount 22" Avantco Ice machines onto any 30" Avantco Ice bin (each sold separately). The sturdy construction ensures secure installation and the proper support needed for your unit. It is compatible with Avantco models only.

**⚠ WARNING:** This product can expose you to chemicals including lead, which are known to the State of California to cause cancer and birth defects or other reproductive harm. For more information, go to [www.p65warnings.ca.gov](http://www.p65warnings.ca.gov).