

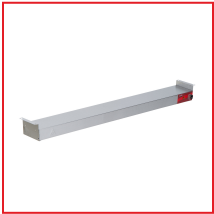


Item #: 177SW36T Project: _____

Qty: _____ Date: _____ Approval: _____

Avantco ISW-36-TGL 36" High Wattage Strip Warmer with On/Off Toggle Controls - 120V, 850W

Item #177SW36T



Technical Data

Width	36 Inches
Depth	6 1/8 Inches
Height	2 5/8 Inches
Power Cord Length	55 1/8 Inches
Amps	7.08 Amps
Hertz	60 Hz
Phase	1 Phase
Voltage	120 Volts
Wattage	850 Watts
Control Type	Attached Toggle

Certifications



Hardwired



CE Marking



ETL, US

Avantco Equipment



Technical Data

Features	Mounting Tabs Overhead Quick Ship
Heating Source	Metal Sheathed / Calrod
Infrared	Without Infrared
Material	Stainless Steel
Plug Type	Hardwire
Power Type	Electric
Style	Single
Type	Strip Warmers
Usage	Light Duty Medium Duty

Notes & Details

Keep your prepared foods hot and ready to serve with the Avantco 36" strip warmer with toggle controls! This strip warmer uses a durable metal sheathed element to provide 850 watts of heating power, hot enough to maintain peak serving temperatures but gentle enough to prevent drying or overcooking. It's perfect for use in your cafeteria, restaurant, banquet hall, buffet line, or anywhere that you need to keep prepared foods piping hot and fresh for your customers.

The warmer's medium-duty stainless steel housing provides excellent durability and corrosion resistance, making it ideal for a busy kitchen environment. Side-mounted toggle controls are simple to operate and provide one level of heat, so you can be sure your staff does not overheat your foods. For your convenience, mounting brackets are included to make installation as easy as possible. This unit must be hardwired and requires a 120V electrical connection for operation.

⚠ WARNING: This product can expose you to chemicals including lead, which are known to the State of California to cause cancer and birth defects or other reproductive harm. For more information, go to www.p65warnings.ca.gov.