



Item #: 177MX10H Project: _____

Qty: _____ Date: _____ Approval: _____

Avantco MX10H 10 Qt. Planetary Stand Mixer with Guard & Standard Accessories - 120V, 3/4 hp

Item #177MX10H



Technical Data

Width	14 Inches
Depth	20 Inches
Height	24 7/8 Inches
Hertz	60 Hz
Phase	1 Phase
Voltage	120 Volts
Wattage	550 Watts
Capacity	10 qt.
Color	Silver
Horsepower	3/4 hp

Features

- Durable 10 qt. 304 stainless steel bowl protected by a wire bowl guard
- Includes stainless steel wire whip, cast aluminum dough beater, and dough hook
- Easy to use with simple on/off buttons and ergonomic bowl lift handle
- 3/4 hp motor
- Includes a 30 minute timer

Certifications



5-15P



ETL, US & Canada



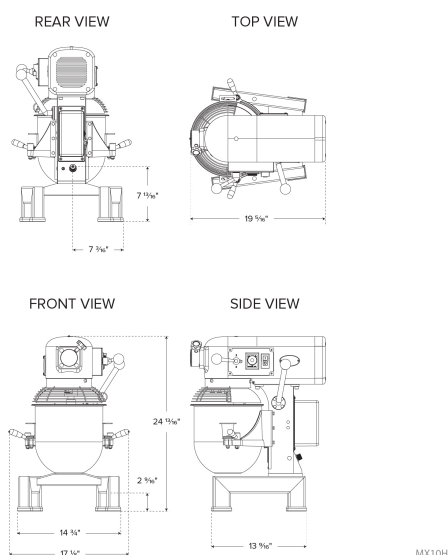
ETL Sanitation

Avantco Equipment

Technical Data

Lift Type	Manual
Mixer Type	Planetary
Number of Mixing Heads	1
Plug Type	NEMA 5-15P
Power Type	Electric
Speeds	3 Speed
Style	Lift
Timer	With Timer
Transmission Type	Gear-Driven
Type	Stand Mixers
Usage	Standard Duty

Plan View



Notes & Details

Designed for standard-duty use in your cafe or restaurant kitchen, the reliable Avantco MX10H gear-driven 10 qt. commercial planetary mixer makes it easy to mix ingredients for your specialized baked goods and desserts! Featuring a 100% gear-driven transmission, this mixer boasts a powerful 3/4 hp motor to make quick work of your kitchen tasks.

This mixer features easy-to-use push-button controls, and you can change the mixing speeds to low, medium, or high for maximum convenience and control. It also includes a 30 minute timer for optimal convenience. A black reset button is located on the left side of the mixer, just above the base. For added safety, this mixer will not operate when the bowl guard is opened or when the bowl is lowered. Unlike many other mixers, the included 10 qt. bowl and wire whip are made of 304 grade stainless to resist rust. Plus, the Avantco unit comes with a stainless steel guard, flat beater, and dough hook so you can start using your mixer the moment it arrives! This unit requires a 120V electrical connection for operation.

⚠ WARNING: This product can expose you to chemicals including lead, which are known to the State of California to cause cancer and birth defects or other reproductive harm. For more information, go to www.p65warnings.ca.gov.