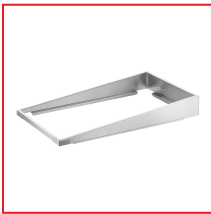


## Avantco Stainless Steel Angled Display Adapter - 12 3/4" x 21" x 3 1/4"

Item #177AP1HANG



### Technical Data

Length	21 Inches
Width	12 3/4 Inches
Height	3 1/4 Inches
Color	Silver
Cutout Shape	Rectangle
Gauge	19 Gauge
Number of Compartments	1 Compartment
Pan Type	Stainless Steel Pans
Temperature Range	-100 - 400 Degrees F
Type	Adapter Plates

### Features

- Designed to securely fit in standard hot and cold wells, warmers, and chafers
- Ensures easy serving of sides, sauces, and desserts at buffets and catered events
- Made of durable type 201, 19-gauge stainless steel for longevity
- Holds steam table pans at an angle for easier viewing and access
- Easy-to-clean design

### Notes & Details

This Avantco stainless steel angled display adapter makes it easy to add dimension to your creative buffet presentations! Normal, flat displays can fall flat when it comes to making an impression on customers, and this design is also harder to access behind sneeze guards. The angled adapter fixes that problem by holding steam table pans at an angle, which enhances visibility so that customers notice your foods from across the room, while also tilting the pan for easier serving. Use it on select Avantco steam tables.

**⚠ WARNING:** This product can expose you to chemicals including lead, which are known to the State of California to cause cancer and birth defects or other reproductive harm. For more information, go to [www.p65warnings.ca.gov](http://www.p65warnings.ca.gov).