



Project \_\_\_\_\_

Item 190CASTCHOCK Quantity \_\_\_\_\_

Approval \_\_\_\_\_ Date \_\_\_\_\_

## Stainless Steel Caster Placement System

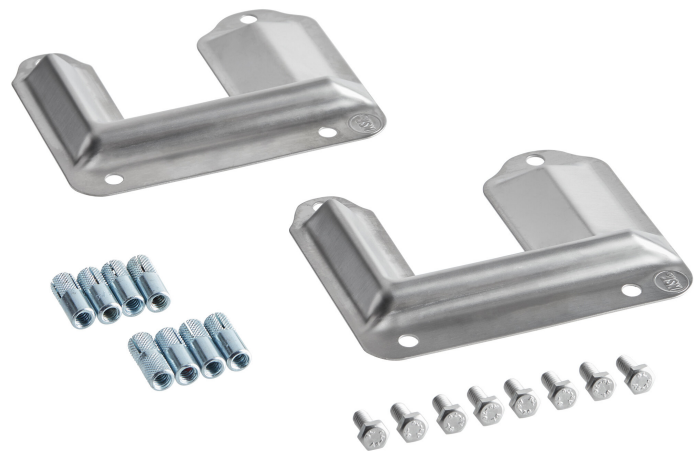
Item #190CASTCHOCK

### Special Features

- Durable, corrosion-resistant 18 gauge, type 304 stainless steel construction
- Works with equipment casters up to 6" in diameter
- Includes 2 caster chocks, 8 screws, and 8 anchors
- Low design makes it easy to move equipment when needed
- Fast, hassle-free installation with included hardware

### Technical Data

<b>Length</b>	5 1/8 Inches
<b>Width</b>	4 1/8 Inches
<b>Height</b>	1/2 Inch
<b>Gauge</b>	18 Gauge
<b>Material</b>	Stainless Steel
<b>Stainless Steel Type</b>	Type 304
<b>Type</b>	Caster Placement Systems



**WARNING:** This product can expose you to chemicals including lead, which are known to the State of California to cause cancer and birth defects or other reproductive harm. For more information, go to [www.p65warnings.ca.gov](http://www.p65warnings.ca.gov).