



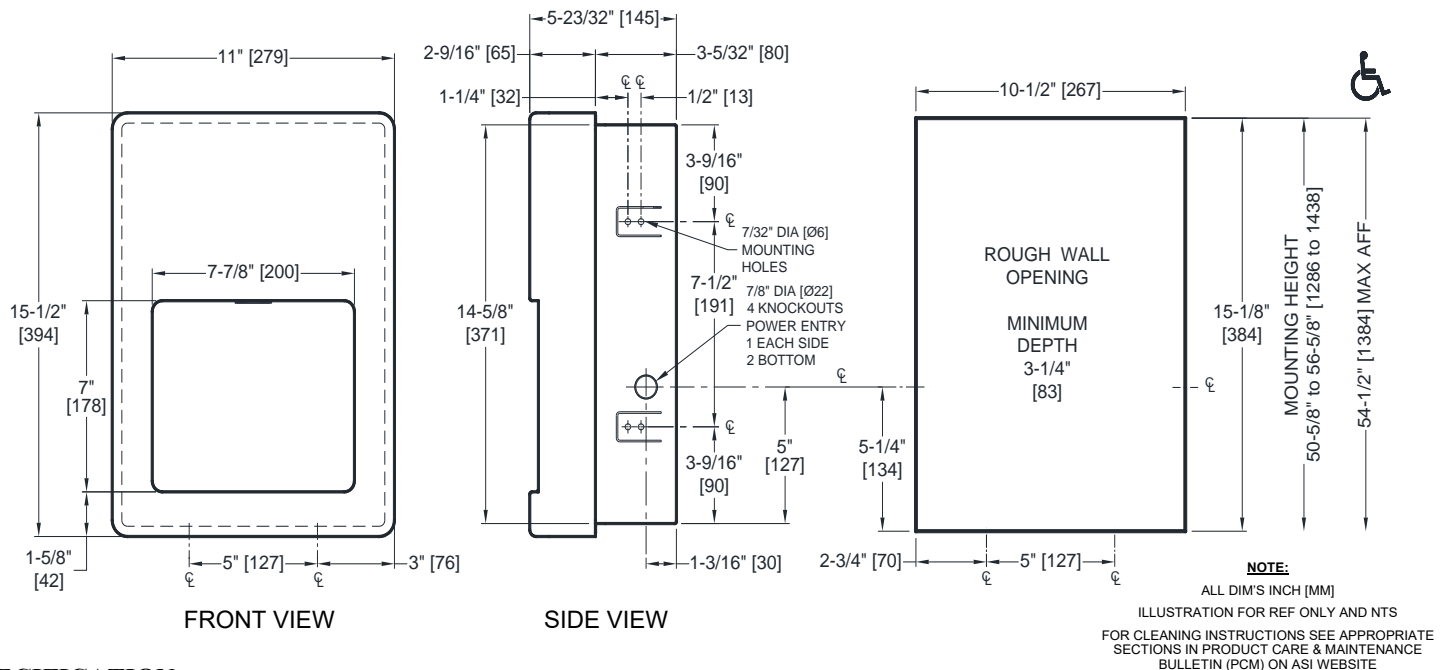
AMERICAN SPECIALTIES, INC.
441 Saw Mill River Road, Yonkers, NY 10701
(914) 476.9000 • (914) 476.0688
www.americanspecialties.com

MODEL №: 20199

ISSUED: 06-10

REVISED: 02 MAR 2020

ROVAL™ COLLECTION SEMI-RECESSED AUTOMATIC HAND DRYER (Pg 1 of 2)



SPECIFICATION

Roval™ Collection Semi-Recessed Automatic Hand Dryer operates automatically from IR sensor that activates dryer when hands are placed in sensor zone. Cabinet full panel shall be drawn seamless and shall have bowed front face and gently radiused edges to provide added strength and complimentary appearance for modern washroom aesthetics. Cover shall be fabricated in one piece of 18 gage (.048" [1.2]) thick type 304 stainless steel alloy 18-8. Hand drying recess shall be same grade and gage. All exposed surfaces shall have a satin finish and shall be protected during shipment by PVC film easily removable after installation. Cabinet shall be 20 gage corrosion protected steel with a 1/2" [13] wide perimeter trim to lay flush against wall and shall have concealed pin-hex security screws to close cover. Motor and heating element shall have internal resetting automatic thermal protection. Fixed directional air vanes shall be heavy duty, rust proof and tamper resistant. Air intake slots shall not allow access to internal parts. Circuitry shall have self-adjusting time-out and fail-safe off protection controlled by a microprocessor that shall detect and reject false signals and shall automatically self calibrate to provide uniform sensitivity over its entire life span. Entire unit shall be internally electrically grounded. Dryer unit shall have approval and be listed under the re-examination services of Underwriters Laboratories, Inc. Unit shall be warranted against defects in materials or workmanship for five (5) years. Mounting Template (MT) and Owner's Manual (OM) provided with unit.

Roval™ Collection Semi-Recessed Automatic Hand Dryer shall be Model № 20199-__ {specify voltage suffix} of American Specialties, Inc., 441 Saw Mill River Road, Yonkers, NY 10701-4913

INSTALLATION

Mount unit cabinet in wall recess with four (4) № 10 [M5] screws (not supplied) into suitably prepared mountings (by others) or other suitable mounting hardware (by others) to suit wall conditions. For masonry walls use expansion bolts or anchors for 1/4" [M6] screws. See unit diagram for electrical service cable rough-in location. Electric service of 100-240VAC 20A 50/60 Hz (provided by others) is brought to RWO at location for dryer indicated on diagram above and is hooked up (by others) in accordance with schematic and Owner's Manual provided with unit. Electrical service is supplied and connected (by others) prior to installing cover. Cover is secured to cabinet with two (2) concealed pin-hex socket button head security screws (supplied). For compliance with ICC/ANSI A-117.1-2003 and 2010 ADA Accessibility Standards install unit with top of dryer hand chamber 48" [1219] max AFF (Above Finished Floor) if clear floor reach access is provided or 46" [1168] max AFF if side reach access over an obstruction (e.g. vanity) with reach depth greater than 10" [254] and less than 25" [508] is only provided or 44" [1118] max AFF if forward reach over an obstruction (e.g. vanity or commode) with reach depth greater than 20" [508] and less than 25" [635] is only provided. For general utility install unit so that top of dryer hand chamber is 44" to 50" [1118 to 1270] AFF. Note that top of RWO is 3/8" [10] below top of unit. For installation of two or more dryers, dryers should be no closer than 24" [610] on center.

RWO required is 10-1/2" [267] W x 15-1/8" [384] H x 3-1/4" [83] D minimum

OPERATION

Activates dryer by placing hands under sensor. LED in sensor array shines blue light during operation to guide user to optimal hand placement for shorter drying time. Dryer automatically shuts off after time-out (Hold On) when user removes hands from sensor zone. Dryer automatically shuts off after time-out if unit is purposefully kept operating for longer than normal drying time (e.g. vandalism).



AMERICAN SPECIALTIES, INC.
441 Saw Mill River Road, Yonkers, NY 10701
(914) 476.9000 • (914) 476.0688
www.americanspecialties.com

MODEL №: 20199

ISSUED: 06-10

REVISED: 02 MAR 2020

ROVAL™ COLLECTION SEMI-RECESSED AUTOMATIC HAND DRYER (Pg 2 of 2)

RATINGS

MODEL	TYPE	TIMING	SUPPLY	AMPS (MAX)	WATTS	COLOR
20199-1	Hand	Automatic 60 second Shut-Off	120 VAC 50/60 Hz	10.42	1250	№ 4 satin finish vertical grain
20199-2			240VAC 50/60 Hz	5.21	1250	

MODEL	MOTOR	H/P	RPM x1000	FAN TYPE	HEATING ELEMENT	AIR FLOW	AIR OUTPUT TEMPERATURE
20199-1	Brush Type Dual Ball Bearings	.67	29	Single Inlet Centrifugal with Patented Flow Control	500 Watt Nichrome wire with auto reset circuit breaker @ 115 VAC	60 CFM (102 m ³ /h)	131° F ± 5 @ 77° F (55° C ± 2.8 @ 25° C) Ambient room temp
20199-2					500 Watt Nichrome wire with auto reset circuit breaker @ 240 VAC		

ADDITIONAL RATINGS

MODEL	SOUND PRESSURE	AIR SPEED	DRYING TIME	SENSOR RANGE	MOTOR THERMAL PROTECTION	HEATER THERMAL PROTECTION
20199-1	66.0 dB-A @ 2M	201 MPH 295 Ft/s 17.7k Ft/m 90 M/s 324 km/h	Less Than 15 Seconds	5-1/8" ~ 10" [130~254] ADJUSTABLE Standard=7" ± 25/32" [178 ± 20]	Shut off @ > 203°F {>95°C}	Shut off @ > 185 °F {> 85 °C} Reset on @ < 167 °F {< 75 °C}
20199-2						