



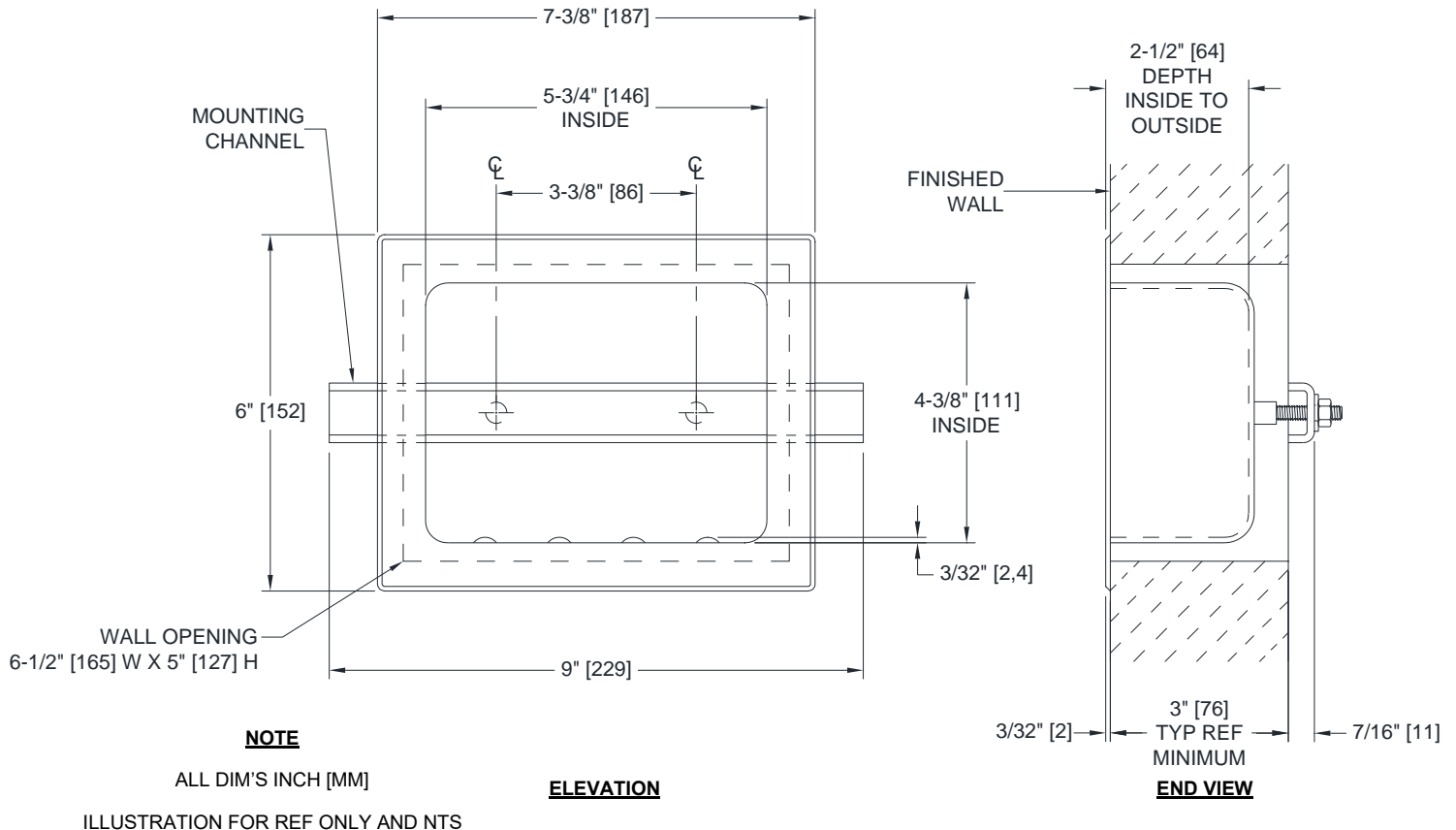
**AMERICAN SPECIALTIES, INC.**  
441 Saw Mill River Road, Yonkers, NY 10701  
(914) 476.9000 • (914) 476.0688  
www.americanspecialties.com

**MODEL №:** 140

**ISSUED:** NOV 1991

**REVISED:** 14 JAN 2022

## RECESSED SOAP DISH



### SPECIFICATION

Recessed Soap Dish (Rear Mounted) shall be formed of 16 gage type 304 stainless steel alloy 18-8. Unit shall be one piece drawn construction with beveled trim and embossments for air circulation. All exposed surfaces shall have satin finish. Back of soap dish shall have two (2) welded on 1/4-20 internally threaded posts that accept threaded rods with washers and nuts (supplied). Back plate shall be die-formed of 11 gage galvanized steel and shall be reversible for shallow or deep wall installation.

**Recessed Soap Dish (Rear Mounted) shall be Model № 140 of American Specialties, Inc., 441 Saw Mill River Road, Yonkers, NY 10701-4913**

### INSTALLATION

For compliance with 2010 ADA Accessibility Standards install unit so that soap dish is 48" [1219] Maximum Above Finished Floor (AFF) in showers or 36" [914] Max AFF in bathtubs or 46" [1168] Max AFF if side reach access over an obstruction (e.g. vanity) is only provided or 44" [1118] Max AFF if forward reach access over vanity basin is provided. Recess mount unit through wall opening and secure to finished wall with washers and nuts (supplied) clamping to inside of chase wall surface.

### OPERATION

Soap is stored in the interior of the dish on raised dimples that allow water to drain away and provide a gripping surface to retain soap.