



AMERICAN SPECIALTIES, INC.

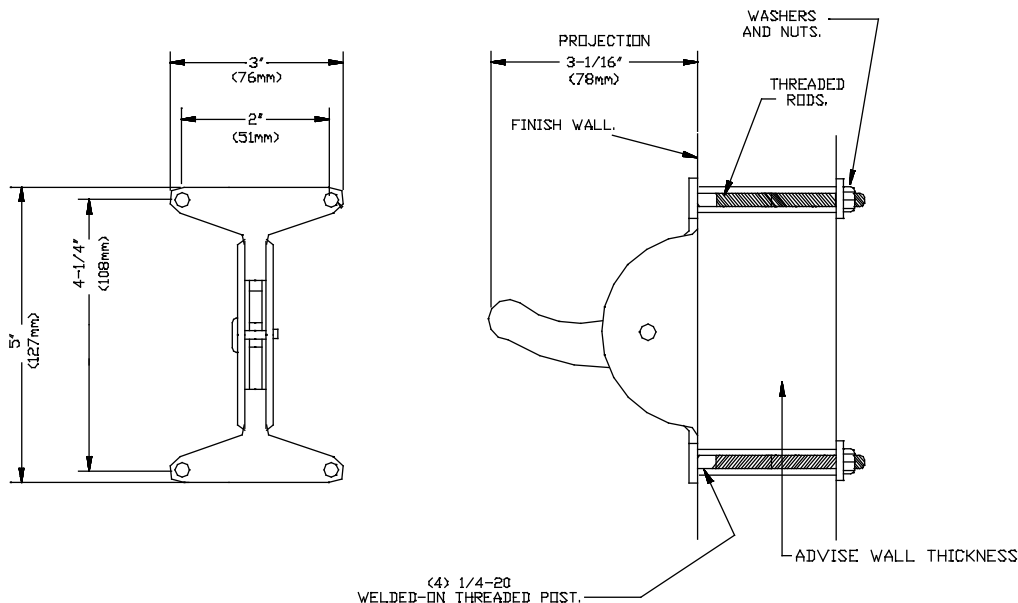
441 Saw Mill River Road, Yonkers, NY 10701 (914) 476-9000

MODEL No: 121

ISSUED: 1-87

REVISED: 6-96

SECURITY CLOTHES HOOK - REAR MOUNTED



ELEVATION

END VIEW

SPECIFICATION

Security Clothes Hook - Rear Mounted shall be fabricated of alloy 18-8 stainless steel, type 304; №11 gauge for bracket and №7 gauge for hook. Wall plate shall have four (4) welded-on rear-mounted 1/4-20 internally- threaded posts that shall receive 1/4-20 threaded zinc-plated steel rod (supplied) of length specified to suit field conditions and shall include washers and nuts. Safety hook shall be secured to bracket with a tamper resistant stainless steel spanner screw and shall tip downward when load exceeds limit set by adjusting tension on rubber friction washers with screw. Internal stop shall prevent hook from being set in vertical-up position. All exposed surfaces shall be №4 satin finish.

Security Clothes Hook - Rear Mounted shall be Model № 121 as fabricated by American Specialties, Inc. 441 Saw Mill River Road, Yonkers, New York 10701-4913

INSTALLATION

Unit is rear mounted to wall or partition using four (4) 1/4-20 threaded studs, washers and nuts (supplied). For compliance with ADA Accessibility Guidelines, unit should be installed so that center line of the hook is 54" (1372mm) maximum above finished floor (AFF) when clear floor side reach access is provided, or 48" (1219mm) max. AFF if clear floor forward reach access is provided. Unit is supplied as standard with threaded studs suitable for mounting on walls up to 6" thick. Other wall thickness over 6" must be specified in chart for fabrication of adequate length studs.

(Indicate thickness of wall with check mark, and specify length if over 8" (203mm).

Up to 6" (152mm)	8" (203mm)	Over 8" (203mm)	specify W = inches

Accessory Specialties

AMERICAN DISPENSER

Desert Ray Products

WATROUS INC.