



**AMERICAN SPECIALTIES, INC.**

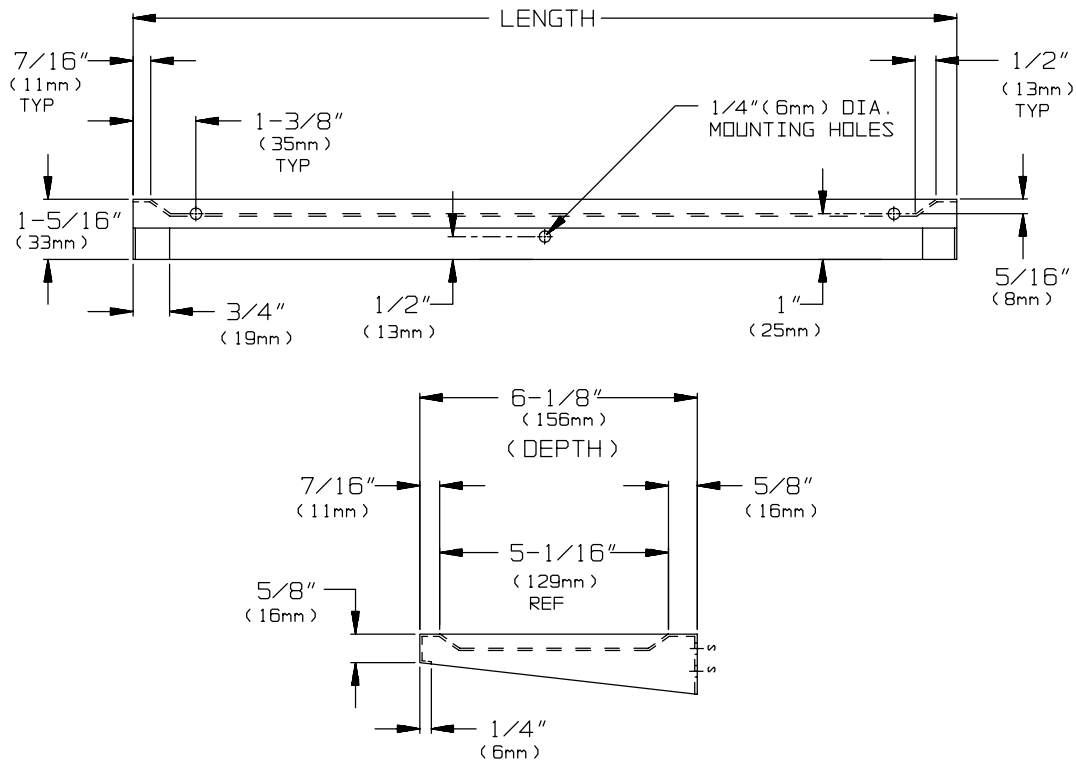
441 Saw Mill River Road, Yonkers, NY 10701 (914) 476-9000

MODEL No: 0690

ISSUED: 1-87

REVISED: 9-04

## SURFACE MOUNTED SHELF



### SPECIFICATION

Surface Mounted Shelf shall be fabricated of alloy 18-8 stainless steel, type 304 and shall be 18 gauge. Shelf shall have a 5/8" (16mm) lip on front with an extra return for rigidity and safety. Sides of shelf shall be closed and tapered from front to rear. Rear of shelf shall have a turned down leg with mounting holes. Shelf shall have a 3/8" (10mm) depression in top surface inside perimeter rim. All edges shall be de-burred. All exposed surfaces shall be N° 4 satin finish and shall be protected during shipment with a PVC film easily removable after installation.

Surface Mounted Shelf shall be Model N° 0690-xxxx as manufactured by American Specialties, Inc., 441 Saw Mill River Road, Yonkers, New York 10701-4913

Model No.	LENGTH	DEPTH	QUANTITY REQUIRED
0690-0618	18" (457mm)	6" (152mm)	
0690-0624	24" (610mm)	6" (152mm)	

### INSTALLATION

Unit is surface mounted on wall or partition using N° 10 self tapping screws (by others) through (3) holes provided in shelf back return. For compliance with ADA Accessibility Guidelines, unit should be installed so that shelf top is between 48" (1219mm) maximum above finished floor (AFF) and 32" (813mm) minimum AFF; for most common utility, typical is 42" (1067mm) AFF or 18" (457mm) above wash basin.

### OPERATION

Shelf is stable and stationary after proper and secure mounting to adequate wall reinforcement or stud structure. Shelf is suitable for toiletry material storage.

Accessory Specialties

AMERICAN DISPENSER

Desert Ray Products

WATROUS INC.