



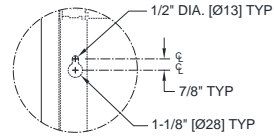
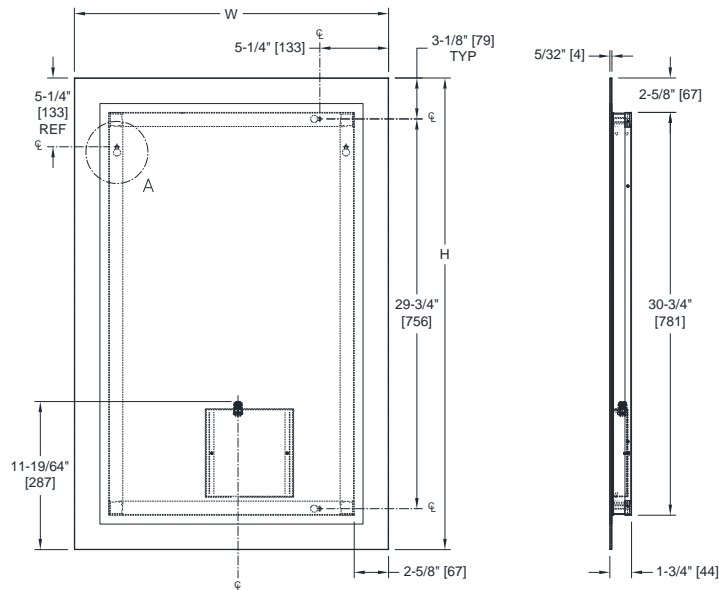
**AMERICAN SPECIALTIES, INC.**  
441 Saw Mill River Road, Yonkers, NY 10701  
(914) 476.9000 • (914) 476.0688  
www.americanspecialties.com

**MODEL №:** 0641

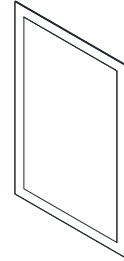
**ISSUED:** 16 DEC 2020

**REVISED:**

## FRAMELESS LED LIGHTED MIRROR



**DETAIL A**



**ISOMETRIC**

### **NOTE**

ALL DIM'S INCH [MM]

ILLUSTRATION FOR REF ONLY AND NTS

FOR CLEANING INSTRUCTIONS SEE APPROPRIATE  
SECTIONS IN PRODUCT CARE & MAINTENANCE  
BULLETIN (PCM) ON ASI WEBSITE

**FRONT VIEW**

**SIDE VIEW**

### **SPECIFICATION**

Frameless polished edge mirror with integral mounting frame and frosted glass border LED halo lighting shall be consistent with A glazing and shall be 5/32" [4] thick. Hard wired LED lighting system shall be UL listed and shall operate on 100/240 VAC 50/60 Hz. Light color shall be the equivalent of 6000 K. Unit shall be mountable in horizontal or vertical format without additional brackets or adaptations to mounting provisions. Power cord is included for use by owner if appropriate socket is provided on wall (by others) concealed by mounting frame of mirror and is 34" [86] long with 3-prong USA pattern plug and bare wires for connection to hard wiring in LED control box. Mirror glass and LED system shall be warranted for manufacturing defects for a period of five (5) years from ship date.

**Frameless LED Lighted Mirror shall be Model № 0640-\_\_\_\_\_ (specify W x H) of American Specialties, Inc., 441 Saw Mill River Road, Yonkers, NY 10701-4913**

### **INSTALLATION**

Keyhole mounting slots are provided in long and short sides of back frame. Mirror is to be hung on pre-installed pan head screws (provided) to be retained by screw heads engaged into the slots. Mounting screws must be tightened into appropriate wall anchors (by others) or blocking (by others) to suit site conditions adequate to support weight of mirror. Power must be provided (by others) to allow hard wiring (by others) of LED control circuitry. Wall switch (by others) should be installed (by others) to control on-off function. Face of mirror will be 1-3/4" [45] from wall when installation is completed.

### **OPERATION**

External wall switch (by others) controls on-off function of frosted glass border LED halo lighting. Clean mirror regularly with the same methods used for other windows or mirrors in dry locations.

Schedule of Availability			
Model №	Size (W x H) field swap-able	Weight (lb[kg])	Brightness (Lumens)
0641-2436	24 x 36 [610 x 914]	42 [19]	2352
0641-3036	30 x 36 [762 x 914]	53 [24]	2640
0641-4836	48 x 36 [1219 x 914]	84 [38]	3514
0641-6036	60 x 36 [1524 x 914]	105 [48]	4128