



430

Frozen Beverage Freezer

Single Flavor

Store Application

For use <\$1MM restaurant

Great for inline, non-traditional or lower volume situations

Lower cost and smaller footprint for lower volumes

Quick recovery

Freezing Cylinder

One, 4 quart (3.8 liter).

Mix Hopper

One, 14 quart (13.2 liter). Refrigerated to maintain mix below 41°F (5°C).
Approved for dairy and non-dairy products.

Indicator Lights

Add Mix light alerts the operator to add mix. When the Mix Out light flashes, the unit automatically shuts down to prevent damage.

Automatic Consistency Control

A specially designed viscosity control automatically maintains superior product quality. An adjustable control allows the operator to serve a wide variety of frozen beverages at the desired thickness.

Refrigeration System

One, approximately 4,000 BTU/hr compressor. R404A.

(BTUs may vary depending on compressor used.)

Beater Motor

One, 1/4 HP.

Syrup Rail

Three compartment syrup rail for shake flavorings, must be ordered separately from Taylor Freezer Sales Company of Georgia, Inc.



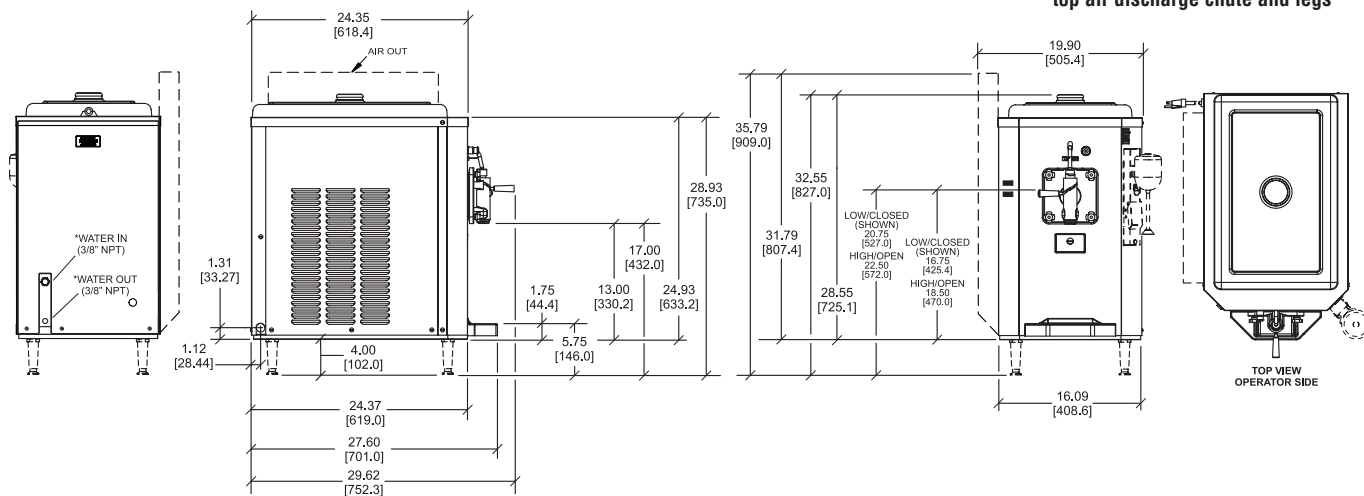


430

Frozen Beverage Freezer

Single Flavor

Shown with optional panel spinner,
top air discharge chute and legs



FIGURES IN BRACKETS INDICATE MILLIMETERS / DECIMAL DIMENSIONS EQUAL TO (PLUS OR MINUS 1/16 INCH [1.5mm]). * WATER COOLED ONLY

Weights	lbs.	kgs.
Net	176	79.8
Crated	207	93.9
	cu. ft.	cu. m.
Volume	17.7	0.50
Dimensions	in.	mm.
Width	16-1/8	409
Depth	27-5/8	701
Height	28-9/16	725
Counter Clearance	---	---

Electrical	Total Amps	Supplied with NEMA Cord
115/60/1 Air	16.0	5-20P

This unit may be manufactured in other electrical characteristics and may have additional regulatory agency approvals. Consult the local Taylor Distributor for other electrical characteristics and agency approvals based on specific electrical and country requirements.

(For exact electrical information and approval marks, always refer to the data label of the unit.)

Continuing research results in steady improvements; therefore, these specifications are subject to change without notice.

Bidding Specs

Electrical: Volt _____ Hz _____ ph _____

Neutral: ☐ Yes ☐ No

Cooling: ☐ Air ☐ Water ☐ NA

Options: _____

Specifications

Electrical

One dedicated electrical connection is required. See the Electrical chart for the proper electrical requirements. Manufactured to be cord connected. Consult the international Taylor distributor for cord & receptacle specifications for 50 Hz. equipment.

Refrigeration System

One, approximately 4,000 BTU/hr compressor. R404A. (BTUs may vary depending on compressor used.)

Beater Motor

One, 1/4 HP.

Air Cooled

Minimum Clearance: 3" (76 mm) on both sides. It is recommended to place the rear of the unit against the wall. Minimum air clearances must be met to assure adequate air flow for optimum performance.



TAYLOR®

**Taylor Freezer Sales Company
of Georgia, Inc.**

247 Castleberry Industrial Drive
Cumming, GA 30040
Contact: Kim Stephens (Ofc) 770-458-546 x2229
Email: k.stephens@taylorfreezer.us
Fax: 770-454-7295