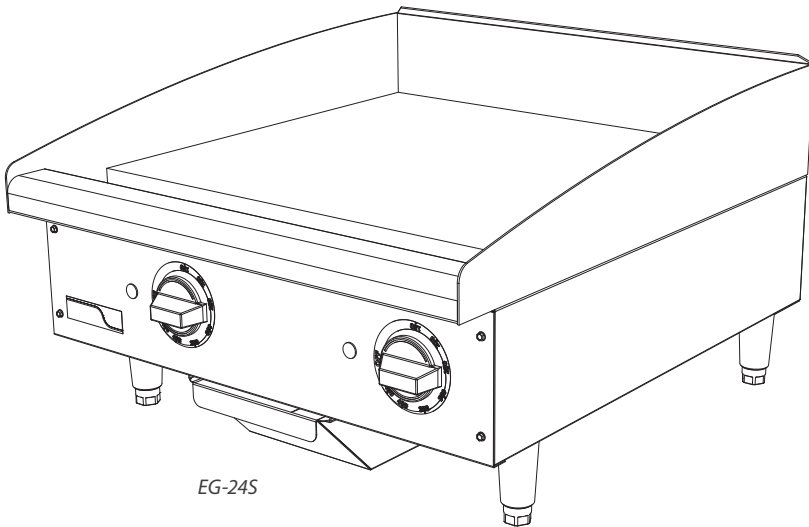




Job \_\_\_\_\_ Item No. \_\_\_\_\_

## **ELECTRIC GRIDDLE**

*EG-24S, EG-36S, EG-48S*



EG-24S

### **Features**

- 3,000–4,000 watts per twelve inch (305 mm) section of griddle, with individual controls for each section
- Positive-off, snap-action thermostat allows for precise control of temperature from 150° F (66° C) to 450° F (232° C)
- Stainless steel bullnose and front panel
- 0.75-inch (19 mm) thick polished steel surface
- 3.25-inch wide front grease trough

### **Applications**

APW Wyott electric griddles are designed to be reliable, efficient, and accurate. Each twelve [12] inch (305 mm) section has its own independent temperature control and the griddle surface is 0.75-inch (19 mm) thick, providing even cooking of a variety of products at the same time.

### **Specifications**

APW Wyott electric countertop griddle will be constructed in the U.S.A. with a corrosion-resistant stainless steel body. The griddle plate will be 0.75-inch (19 mm) thick and will have a polished steel surface. The heating elements will allow control of each twelve [12] inch (305 mm) section and have an independent control for each section. The temperature will be controlled by snap-action thermostats from 150° F (66° C) up to 450° F (232° C). The unit will have one [1] grease drawer. The griddles will be ready to hard-wire to an appropriate electrical connection. Models will operate on 208 V/240 V service. The griddles will be supplied with four [4] inch (102 mm) tall legs that have an adjustment of 1.375 inches (35 mm).

### **Warranty**

These units come with a one [1] year warranty for parts and labor.



**APW Wyott** • [www.apwwyott.com/](http://www.apwwyott.com/)  
265 Hobson St. • Smithville, TN 37166  
Telephone: (800)-264-7827 • Fax: (314)-781-5445

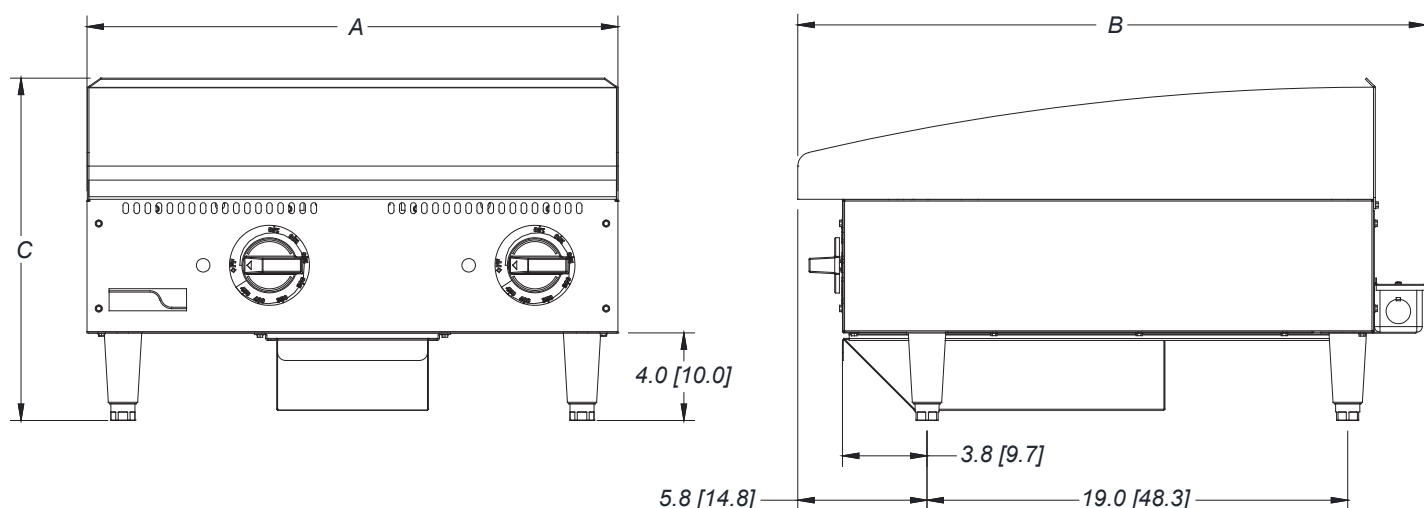
**APW Wyott** is a registered trademark of APW Wyott®, A Middleby Company. All rights reserved.

Printed in the U.S.A. • 2M-Z23871 • Rev - (12/16/2020)  
Specifications are subject to change without notice.

Please refer to the owner's manual for information regarding installation or use.

# SPECIFICATIONS

EG-24S



Model No.	(A) Width Inches (cm)	(B) Depth Inches (cm)	(C) Height Inches (cm)	(D) Leg Width Inches (cm)	Plate Depth Inches (mm)	Installed Weight lbs. (kg)	Shipping Weight lbs. (kg)
EG-24S	24 (61.0)	28-1/2 (72.1)	15-1/2 (39.4)	19 (48.3)	20.5 (128.3 cm)	165 (74.8)	175 (79.4)
EG-36S	36 (91.4)	28-1/2 (72.1)	15-1/2 (39.4)	32-3/4 (83.2)	20.5 (128.3 cm)	247 (112.0)	262 (118.9)
EG-48S	48 (121.9)	28-1/2 (72.1)	15-1/2 (39.4)	44-3/4 (113.7)	20.5 (128.3 cm)	330 (149.7)	350 (158.9)

NOMINAL AMPS PER LINE WIRE										
MODEL	208V	240V	208V 3PH			240V 3PH			208V	240V
			X	Y	Z	X	Y	Z	1 PH	1 PH
EG-24S	6,008	8,000	14.4	25	14.4	16.7	28.9	16.7	28.9	33.3
EG-36S	9,012	12,000	25	25	25	28.9	28.9	28.9	43.3	50.0
EG-48S	12,016	16,000	38.2	25	38.2	44.2	28.9	44.2	57.8	66.7

3 PHASE LOADING KW PER PHASE									
MODEL	208V	240V	208V 50/60 HZ			240V 50/60 HZ			
			X-Y	Y-Z	X-Z	X-Y	Y-Z	X-Z	
EG-24S	6,008	8,000	3	3	-	4	4	-	
EG-36S	9,012	12,000	3	3	3	4	4	4	
EG-48S	12,016	16,000	3	3	6	4	4	8	

## INTENDED FOR COMMERCIAL USE ONLY. NOT FOR HOUSEHOLD USE.

Due to periodic changes in designs, methods, procedures, policies and regulations, the specifications contained in this sheet are subject to change without notice. While Star Manufacturing exercises good faith efforts to provide information that is accurate, we are not responsible for errors or omissions in information provided or conclusions reached as a result of using the specifications. By using the information provided, the user assumes all risks in connection with such use.

**APW Wyott** • [www.apwwyott.com/](http://www.apwwyott.com/)  
 265 Hobson St. • Smithville, TN 37166  
 Telephone: (800)-264-7827 • Fax: (314)-781-5445

Printed in the U.S.A. • 2M-Z23871 • Rev - (12/16/2020)  
 Specifications are subject to change without notice.

Please refer to the owner's manual for information regarding installation or use.

**APW Wyott** is a registered trademark of APW Wyott®, A Middleby Company. All rights reserved.