



Project _____
AIA # _____ SIS # _____
Item # _____ Quantity _____ C.S.I. Section 114000



AM16VL-BAS BASE ELECTRIC High Temperature Ventless Door-Style Dishwashing Machine



SPECIFIER STATEMENT

Specified unit will be a Hobart AM16 Base electric high temperature ventless dishwashing machine. Features include 5-sided insulated hood, ventless operation & energy recovery, door lock, touchscreen controls with WiFi connectivity, NSF pot and pan rating for 2-, 4- & 6-minute cycles, 17" door opening, pumped drain, auto door start with auto fill, interchangeable stainless steel rinse arms and X-shaped wash arms, delime cycle, advanced diagnostics and service connection, up to 45 racks per hour, .67 U.S. gallons per rack pumped final rinse.

1 year parts and labor warranty.

STANDARD FEATURES

- + .67 gallons per rack pumped final rinse
- + 45 racks per hour – hot water sanitizing
- + Two stage filtration
- + Pillarless opening
- + 5-sided insulated hood
- + User-friendly smart touchscreen controls
- + Single point electrical connection standard, field convertible to dual point connection
- + 3 phase standard, field convertible to single phase
- + WiFi connectivity
- + SmartConnect app and cloud with machine status, temperature logs, error code reporting, and cost, consumption and usage analysis
- + Temperature and chemical lock outs with Hobart equipped chemical pumps
- + Pumped drain
- + Ventless operation & energy recovery
- + Door lock
- + Timed wash cycles for 1, 2, 4 or 6 minutes
- + NSF pot and pan rating for 2-, 4- & 6- minute cycles
- + Sense-A-Temp™ 70°F rise electric booster heater
- + Self-draining, high efficiency wash pump with stainless steel impeller
- + 17" door opening
- + Stainless steel drawn tank, tank shelf, chamber, trim panels, frame and feet
- + Spring counterbalanced chamber with reinforced, thermo-plastic rollers
- + X- shaped revolving, interchangeable upper and lower anticlogging wash arms
- + Revolving, interchangeable upper and lower rinse arms
- + Slanted, self-locating, one-piece scrap screen and basket system
- + Automatic fill
- + Door actuated start
- + AutoClean
- + Factory startup
- + Service diagnostics
- + Straight-through or corner installation
- + Delime cycle with notification (field activated)

OPTIONS & ACCESSORIES (Available at extra cost)

- ☐ Peg, combination and wine rack
- ☐ Chemical pumps
- ☐ Drain water tempering kit
- ☐ Splash shield for corner installations
- ☐ Flanged and seismic feet
- ☐ Water hammer arrestor kit
- ☐ Rapid fill kit
- ☐ Prison package
- ☐ Marine package
- ☐ Pumped drain air gap kit

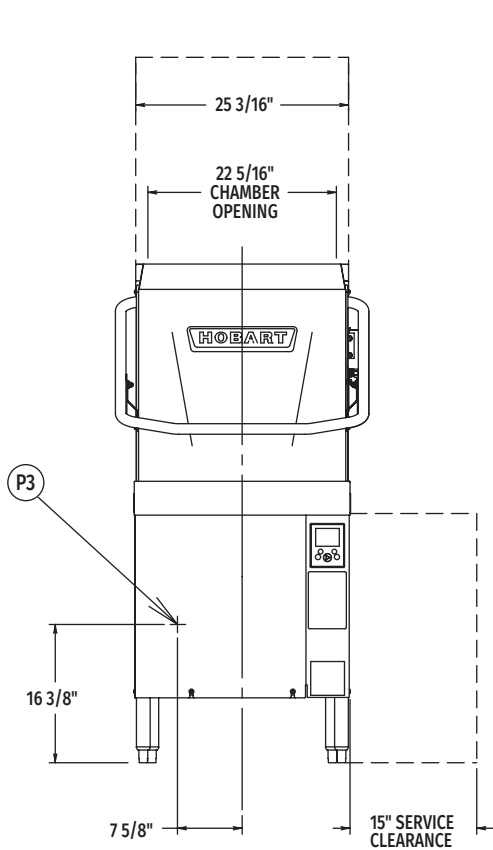
AM16 SERIES – AM16VL-BAS BASE ELECTRIC

Approved by _____ Date _____ Approved by _____ Date _____

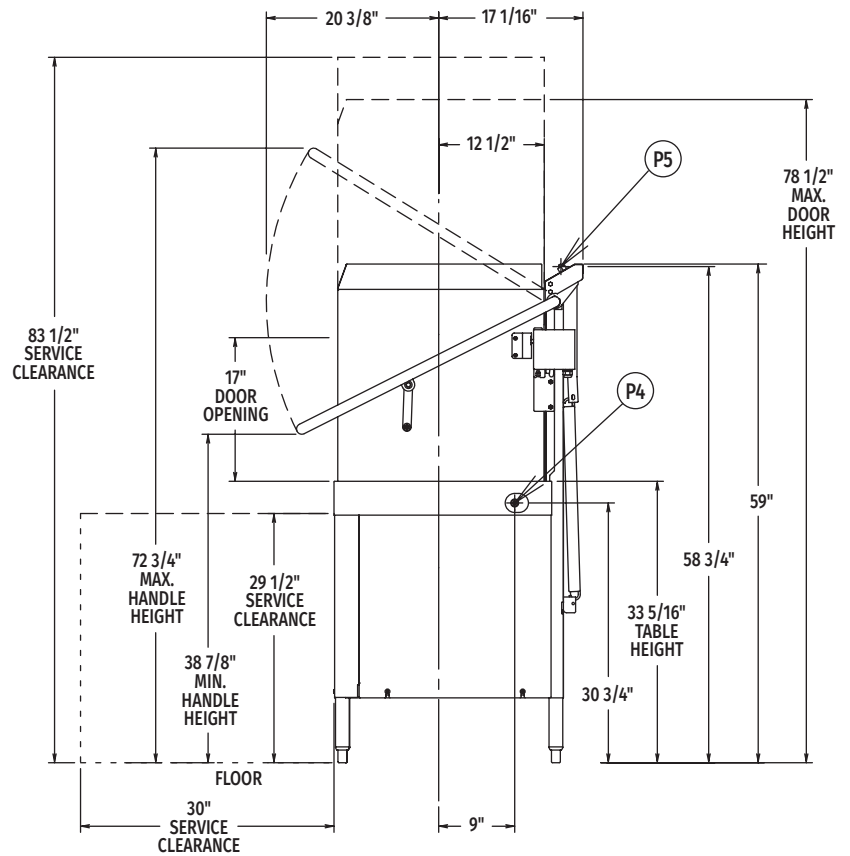


AM16VL-BAS BASE ELECTRIC

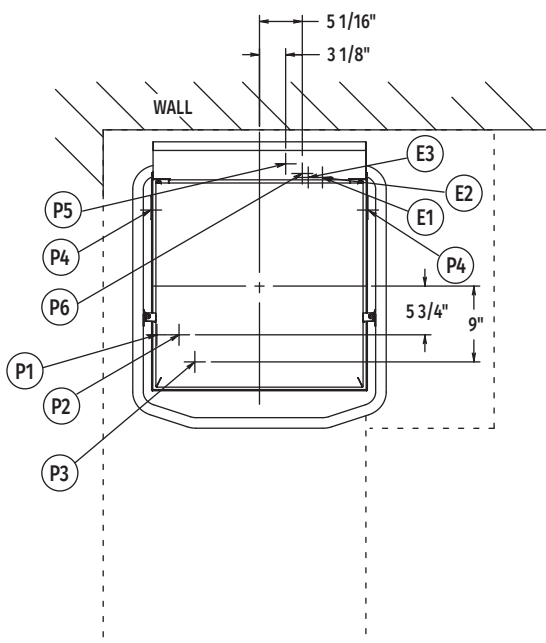
High Temperature Ventless
Door-Style Dishwashing Machine



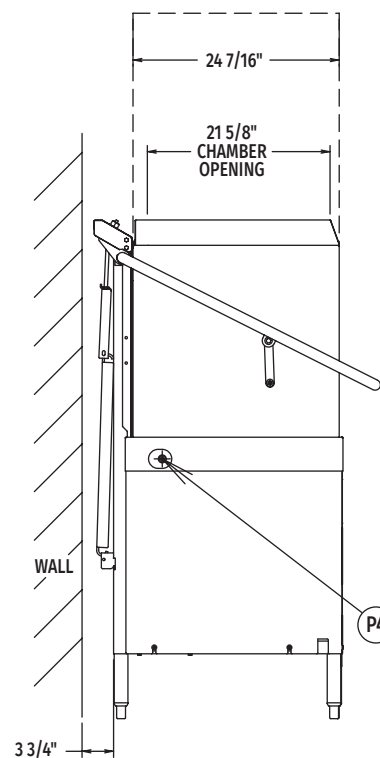
Front View



Right Side View



Top View



Left Side View

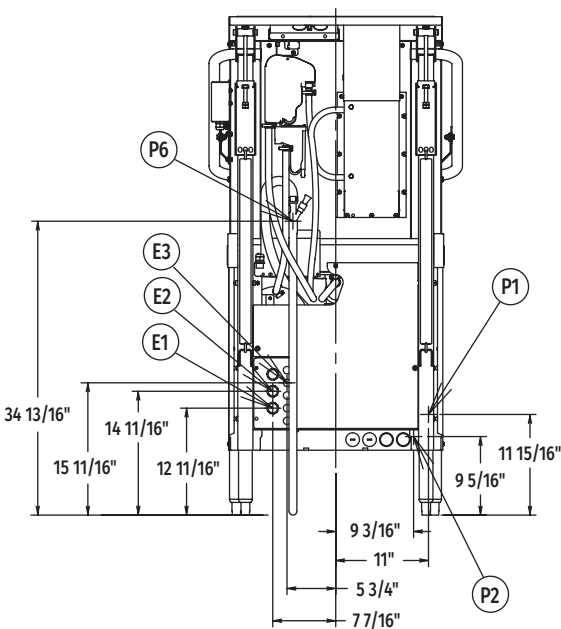
MODEL:
AM16VL-BAS
E-950440



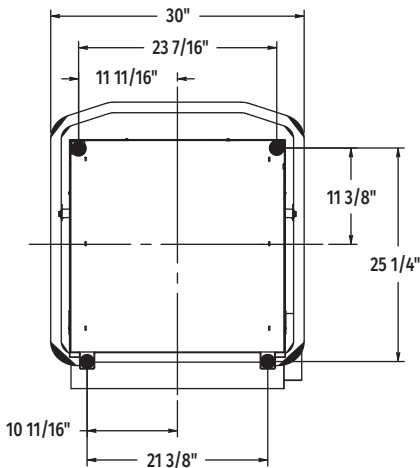
AM16VL-BAS BASE ELECTRIC
High Temperature Ventless
Door-Style Dishwashing Machine

WARNING: Electrical and grounding connections must comply with the applicable portion of the National Electrical Code and/or other local electrical codes.

Plumbing connections must comply with applicable sanitary, safety, and plumbing codes.



Rear View



Bottom View

Miscellaneous Note: For optimal performance, Hobart recommends maintaining a dishroom temperature of 65°F (18°C) or higher, as lower temperatures may hinder the machine’s capacity to operate effectively (with lower performance as ambient temperature decreases)

LEGEND

| Electrical Connections | |
|------------------------|-------------------------------------------------------------------------------------------------------------------------------------------------------------------------------------------------|
| E1 | Electrical connection: wash pump motor & sump heater, 1" or 3/4" conduit hole; 12-11/16" AFF. |
| E2 | Electrical connection: electric booster & controls only or single point electrical connection (3PH only), 1" or 3/4" conduit hole; 14-11/16" AFF. |
| E3 | Electrical connection: detergent & rinse agent feeders, (DPS1 & DPS2) 1.5 amps @ nameplate supply voltage, (RPS1 & RPS2) 1.5 amps @ nameplate supply voltage; 1/2" conduit hole, 15-11/16" AFF. |
| Plumbing Connections | |
| P1 | Common water connection including booster heater: 55°F water minimum, 15-65 PSI recommended; 3/4" female garden hose fitting on 6' long hose supplied with machine; 11-15/16" AFF. |
| P2 | Optional – hot water connection: 110°F water minimum (rapid fill accessory - when ordered); 3/4" female garden hose fitting on 6' long hose; 9-5/16" AFF. |
| P3 | Detergent probe sensor: remove cap and stud assembly to access 7/8" hole; 16-3/8" AFF. |
| P4 | Detergent feeder: two locations available, remove cap and stud assembly to access 7/8" hole; 30-3/4" AFF. |
| P5 | Rinse agent feeder: remove 1/8" NPT pipe plug to access 1/8" NPT tapped hole; 67-5/8" AFF. |
| P6 | Drain connection: 5/8" barb fitting with 6' long hose supplied with machine; 34-13/16" AFF. Maximum height 40" AFF. |

SPECIFICATIONS

Capacities

| | |
|----------------------------------------|-------|
| Racks Per Hour (maximum) | 45 |
| Dishes per Hour (average 25 per rack) | 1,125 |
| Glasses per Hour (average 45 per rack) | 2,025 |
| Wash Tank (U.S. gallons) | 10.5 |

Motor Horsepower

| | |
|------------|------|
| Rinse Pump | 0.18 |
| Wash Pump | 2 |
| Blower | 0.05 |
| Drain Pump | 0.21 |

Rinse

| | |
|----------------------------------------|-------|
| Gallons per Rack | 0.67 |
| Gallons per Hour (maximum consumption) | 30.15 |

Peak Rate of Drain Flow

| | |
|--------------------------------------------------|------|
| Gallons per Minute (initial rate with full tank) | 18.5 |
|--------------------------------------------------|------|

Heating

| | |
|----------------------------|-----|
| Electric Booster (kW) | 7.1 |
| Electric Heating Unit (kW) | 5.4 |

Shipping Weight (approximate) 322 lbs.

Crated Dimensions 65.125"H x 36.5"W x 36.5"L



AM16VL-BAS BASE ELECTRIC

High Temperature Ventless
Door-Style Dishwashing Machine

| E1 | AM16 with Electric Heat (When Field Converted to Dual Point) | | |
|--------------|-----------------------------------------------------------------|---------------------------------|---------------------------|
| Voltage | Rated Amps | Minimum Supply Circuit Ampacity | Maximum Protective Device |
| 208-240/60/1 | 39.6 | 50 | 50 |
| 208-240/60/3 | 26.9 | 30 | 30 |
| 480/60/3 | 10.5 | 15 | 15 |

| E2 | AM16 Single Point Electrical Service Connection as Shown Below | | |
|--------------|-------------------------------------------------------------------|---------------------------------|---------------------------|
| Voltage | Rated Amps | Minimum Supply Circuit Ampacity | Maximum Protective Device |
| 208-240/60/3 | 53.5 | 60 | 60 |
| 480/60/3 | 24.0 | 30 | 30 |

| E2 | Booster & Controls Ampacity Ratings (When Field Converted to Dual Point) | | |
|--------------|-----------------------------------------------------------------------------|---------------------------------|---------------------------|
| Voltage | Rated Amps | Minimum Supply Circuit Ampacity | Maximum Protective Device |
| 208-240/60/1 | 43.3 | 50 | 50 |
| 208-240/60/3 | 26.6 | 30 | 30 |
| 480/60/3 | 13.4 | 15 | 15 |

| Approximate Heat Gain to Space without Vent Hood | |
|-----------------------------------------------------|---------|
| Type | BTU/Hr. |
| Latent | 4,300 |
| Sensible | 3,500 |

Miscellaneous Notes: All dimensions taken from floor line may increase 7/8" or decrease 3/8" depending on leg adjustment.

Vent hood (if required) to provide a minimum of 450 CFM exhaust (ref installation instructions).

Net weight of machine including booster: 305 lbs.

Domestic shipping weight including booster: 325 lbs.

Size of racks – 19-3/4" x 19-3/4".

Plumbing Notes: Water hammer arrestor (meeting ASSE-1010 standard or equivalent) to be supplied (by others) in common water supply line at service connection.

Recommended water hardness to be 3 grains or less for best results.

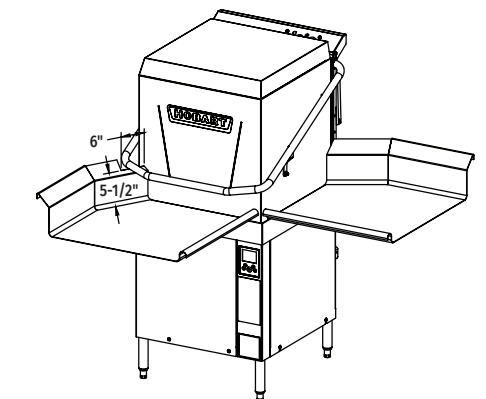
Note: Electric heating unit & booster (kW) calculated at 208V.

Recommended building flowing water pressure to the dishwasher at or above 20 PSI. Pressures lower than 20 PSI may affect machine fill/start-up times.

This is a pumped rinse machine. Pressure regulating valve is not necessary.

For convenience when cleaning, water tap should be installed near machine with heavy duty hose and squeeze valve.

AM16VL-BAS TABLING CONFIGURATIONS AND TRACK DESIGN

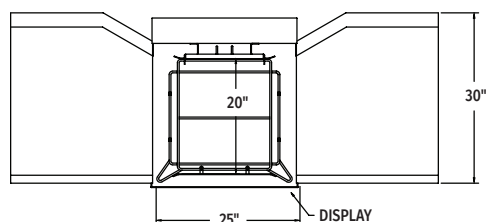
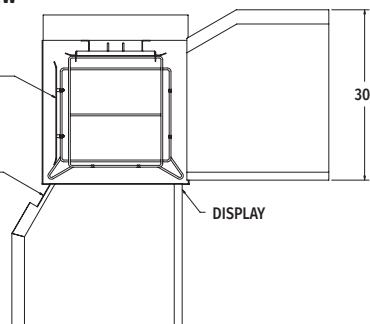


Top Inside View
of Machine

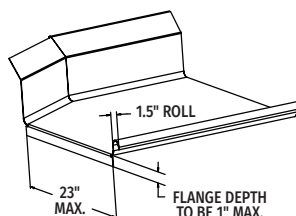
NOTE: REPOSITION RACK
TRACK BRACKET FOR
CORNER INSTALLED UNITS

NOTCH FOR HANDLE CLEARANCE:
6" WIDE x 5 1/2" TALL
MEASURED FROM TABLE SURFACE

Standard Height
Corner Installation

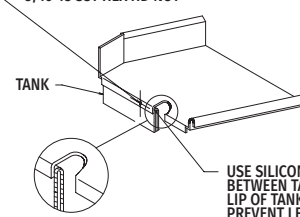


Pass Thru Installation



Suggested Table Design

DRILL Ø 0.344 HOLE THRU TANK WALL
5/16-18 SST TRUSS HD SCREW
5/16-18 SST LOCKWASHER
5/16-18 SST HEX HD NUT



USE SILICONE SEALER
BETWEEN TABLE AND
LIP OF TANK TO
PREVENT LEAKAGE

As continued product improvement is a policy of Hobart, specifications are subject to change without notice.