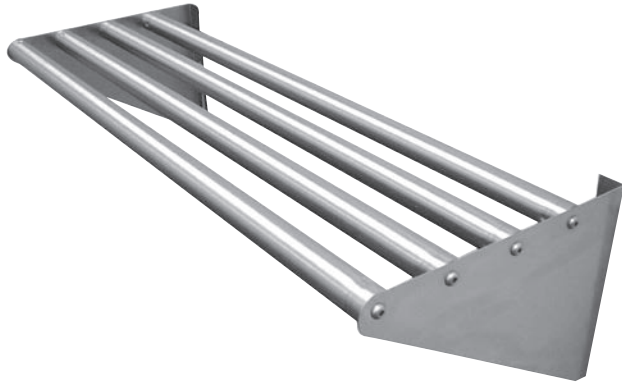


STAINLESS STEEL

TUBULAR WALL MOUNTED KNOCKDOWN DRAINAGE SHELVES



Item #: _____ Qty #: _____

Model #: _____

Project #: _____

Model	Length	Wt.	Cu.
DT-6R-36	15" x 36"	23	2
DT-6R-48	15" x 48"	32	3
DT-6R-60	15" x 60"	39	4
DT-6R-72	15" x 72"	46	5

FEATURES:

15" Deep, horizontal surface area accommodates a variety of drainage applications.

CONSTRUCTION:

Knock Down Design for ease of field installation and lower freight costs.

MATERIAL:

1 5/8" diameter stainless steel type "300" tubing.

Side brackets type "300" stainless steel.

DETAILS and SPECIFICATIONS

TOL ± .500"

ALL DIMENSIONS ARE TYPICAL

