

Item #: _____ **Qty #:** _____

Model #: _____

Project #: _____



SLIDING DOORS
(Shown with Optional Door Lock)



HINGE DOORS
(Shown with Optional Door Lock)



OPEN

THREE AVAILABLE OPTIONS!

WCS Series

L	Sliding Door Unit	# of Doors	Wt.	Cu.
36"	NOT AVAILABLE			
48"	WCS-15-48	2	155 lbs.	21
60"	WCS-15-60	2	185 lbs.	26
72"	WCS-15-72	2	220 lbs.	31
96"	WCS-15-96	4	295 lbs.	41

WCO Series

L	Open Door Unit	Wt.	Cu.
36"	WCO-15-36	95 lbs.	17
48"	WCO-15-48	120 lbs.	21
60"	WCO-15-60	145 lbs.	26
72"	WCO-15-72	180 lbs.	31
96"	WCO-15-96	240 lbs.	41

WCH Series

L	Hinged Door Unit	# of Doors	Wt.	Cu.
36"	WCH-15-36	2	120 lbs.	17
48"	WCH-15-48	2	150 lbs.	21
60"	WCH-15-60	2	180 lbs.	26
72"	WCH-15-72	4	240 lbs.	61
96"	WCH-15-96	4	320 lbs.	41

FEATURES:

Wall hung cabinet with intermediate shelf.
Sloping Top enhances sanitary configuration.

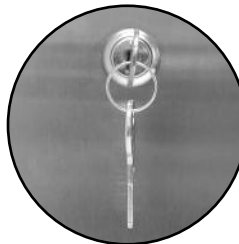
CONSTRUCTION:

All TIG welded using the TIG process.
Welded seams finished to match adjacent surfaces.
Unit polished to a satin finish.

MATERIAL:

18 gauge type 430 series stainless steel.
Stainless steel hinges and handles.
Mounting hardware is not supplied.

**OPTIONAL
DOOR LOCK
TA-46**



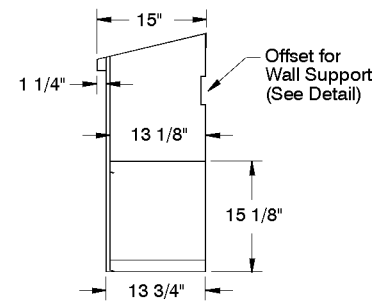
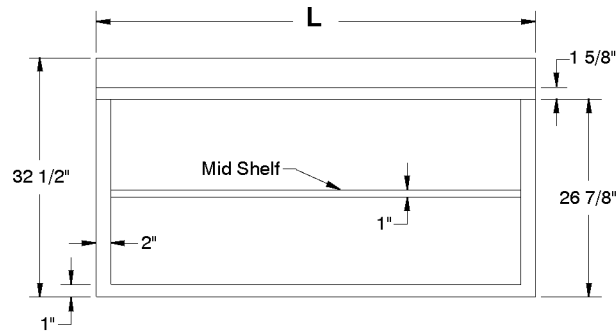
DETAILS and SPECIFICATIONS

TOL $\pm .500''$

ALL DIMENSIONS ARE TYPICAL

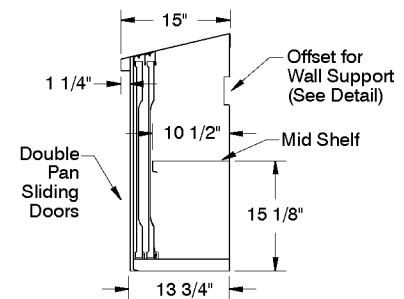
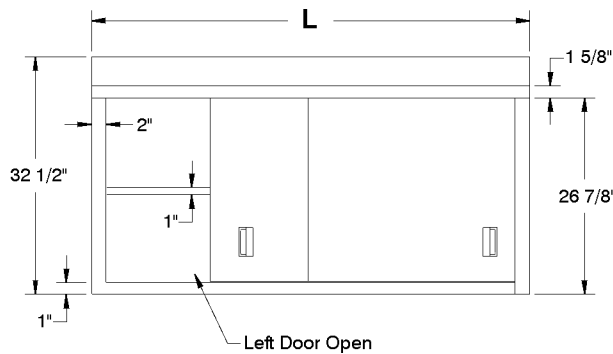
WCO-Series

Open Style



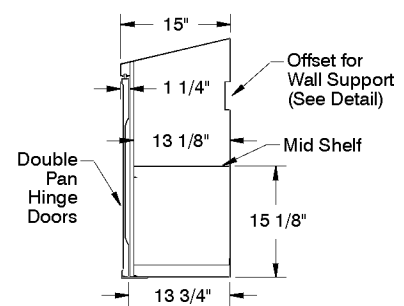
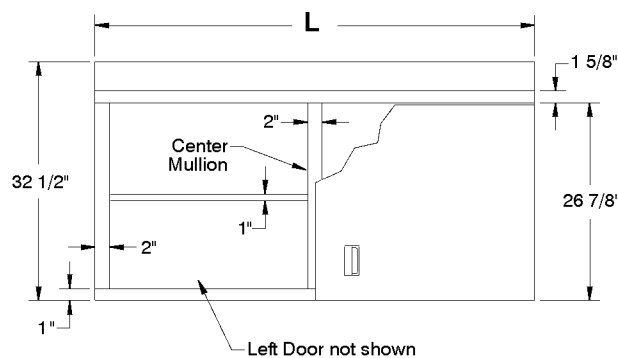
WCS-Series

Sliding Door Style



WCH-Series

Hinge Door Style



OFFSET DETAIL

