

PRESTIGE *Signature Series* Trash Receptacle Cabinets 25" Wide Units



PRSJT-12-DR



Item #: _____ Qty #: _____
Model #: _____
Project #: _____

FEATURES:

All stainless steel construction.

Helps keep bar area clean.

Open bottom with Hinged Door.

Accommodates Slim Jim® Trash Can measuring 11" x 20" x 25" (15 7/8 gallon capacity) - trash can not included.

Units mount between equipment line up.

PRSJT-12-DR ADDITIONAL FEATURES:

1 5/8" O.D. 18 gauge, 300 stainless steel with adjustable stainless steel bullet feet.

Unit mounts between equipment line up.

PRT-12 ADDITIONAL FEATURES:

Open bottom with Hinged Door.

Removable stainless steel Sliding Cover.

MATERIAL:

20 gauge, 300 stainless steel



PRT-12

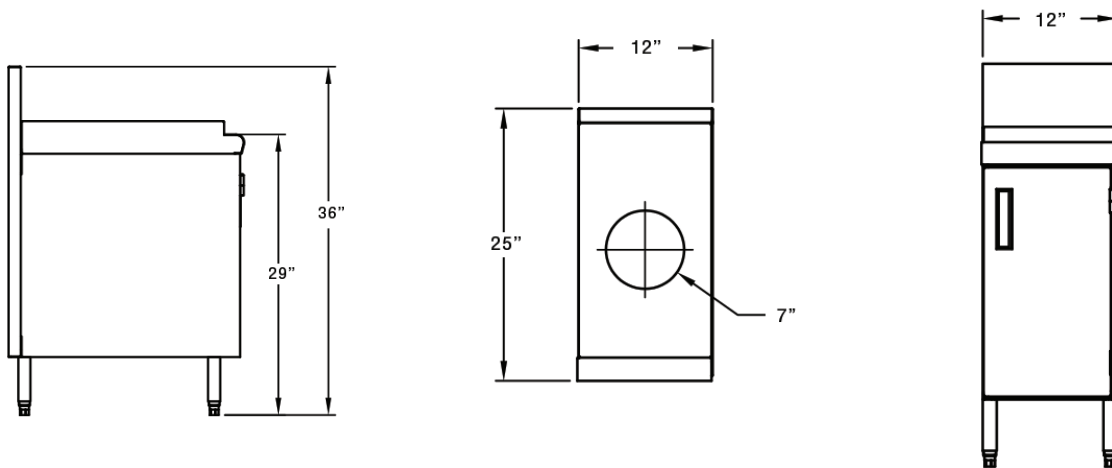
Model #	Size L x W x H	Approx. Weight	Approx. Cu. Ft.
36" High Trash Receptacle Cabinet			
PRSJT-12-DR*	12" x 25" x 36"	60 lbs.	9
19" High Trash Receptacle Cabinet			
PRT-12*	12" x 25" x 19"	35 lbs.	4

DIMENSIONS and SPECIFICATIONS

TOL Overall: $\pm .500"$ Interior: $\pm .250"$

ALL DIMENSIONS ARE TYPICAL

PRSTT-12-DR



PRT-12

