

Bumble Bee Seafoods
FINISHED PRODUCT SPECIFICATION

Finished Good: 4135853125, 12/50OZ SSUE BONELESS CKN WITH BROTH CAN

SPECIFICATION DETAILS

Specification Details	
Material Code	4135853125
Company Name	Bumble Bee Seafoods
Unit Weight	50

PRODUCT DETAILS

Product Properties	
Brand	SWEET SUE
Serving Size (G,OZ,LB, ml)	2 oz (56g)
General Comments	Canned, fully cooked, boneless chunks of chicken with broth in a can.

Distribution Markets	
United States	

Commodities	
Chicken; Chicken is derived from USDA inspected poultry	

Commodity Properties	
Species	
Method of Catch	
Social Compliance	

PACK

Pack Properties	
Style	Pulled and diced chicken meat in a can.
Style Comments	Almost a solid pack with a residual of broth.

Media & Ingredients	
Media Type	Chicken Broth
Ingredients	Salt: Food grade. Modified Corn Starch: Food grade. Sodium Phosphate: Maximum usage shall be 0.5% total added phosphate, calculated as sodium phosphate, dibasic. Garlic Powder Carrageenan
Piece Count	

REQUIREMENTS AND CERTIFICATIONS

Regulatory Requirements	
Regulatory Body	USDA
Regulatory Requirements Description	USDA P-65 to meet all applicable requirements of 9 CFR Part 381 - Poultry Products

	Inspection Regulations, including but not limited to 9 CFR 381 Subpart N - Labeling & Containers and 9 CFR 381 Subpart Y - Nutrition Labeling. The facility must meet the expectations set forth in Subchapter E - Regulatory Requirements Under the Federal Meat Inspection Act, the Poultry Products Inspection Act, and the Egg Products Inspection Act including but not limited to 9 CFR Parts 412 – 431 and Part 442. The formula must meet the standards set for all claims represented on packaging, to include those regulations previously mentioned.
--	--

Certifications

Certification Type	
Certification Description	

CONTAINER**Container Properties**

Container Type	Can; internal can coatings will be certified by the can manufacturer as BPA-free or BPA not intentionally added.
Dimensions	404 x 700
Color	Gray colored end.
Net Weight	50 oz (3 lb 2 oz) 1.42 kg
Net Weight Tolerance	Complies with NIST Handbook 133, Table 2-9 for USDA products
Vacuum	1 - 15 inches gauge. All cans with ends flat or concave.
Headspace	Shall not be excessive, must be appropriate to container size.
Container Comments	Free from rust, oil, filth or other abnormalities.
Construction	Three piece can with welded side seam; steel can and ends.
Can Material	Steel
End Material	Steel

Container Production Code

Code Format	US 2 years: The Container Code and Best By date (2 years from the date of production) will be marked on the individual can or pouch, with the words: BEST BY MMM YYYY. Where: MMM refers to the first three letters of the month in English when the product expires, and YYYY refers to the full year when the product expires. For example: Production date October 15, 2004 would be marked with BEST BY OCT 2006. Alternative format: BEST BY MMM DD YYYY.
-------------	--

LABEL**Ingredient Statements**

Market	United States
	CHICKEN MEAT, CHICKEN BROTH, LESS THAN 2% OF MODIFIED CORN STARCH, SALT, SODIUM PHOSPHATE, GARLIC POWDER, CARRAGEENAN.

Allergy Statements

Market	United States
	NONE

Label Details

Label Comments	
----------------	--

QUALITY

Organoleptic Features	
Top Appearance	Upon opening, the broth covering will be oily and yellowish in color, the meat is a mixture of white and dark meat. The product on draining will have large and small chunks of meat that are white/ off white/ slight pink/ tan colored.
Odor / Flavor	Typical of boiled chicken. Slightly oily with a salt note and a strong poultry flavor. Very salty with a sweet after taste
Color	White/off white/slight pink hue and tan
Texture	Soft textured meat chunks. This is a foodservice item designed for burrito and meat pie fillings.
Salt	Target 1.25%, plus or minus 0.2%
Fat	
Quality Assurance Comments	US domestic: To ensure compliance to product specifications, Bumble Bee Foods Quality Assurance personnel shall have access to the processing facility during production of product for Bumble Bee Foods. All plants shall be subject to inspection and approval by Bumble Bee Foods Quality Assurance personnel. A copy of a recent third party audit report, and corrective actions, will be requested. All processing, quality assurance and warehousing records pertaining to purchased products shall be made available to Bumble Bee Foods. The supplier shall obtain from Bumble Bee Foods prior written approval of any manufacturer of products to be offered and sold to Bumble Bee Foods under this agreement. All suppliers shall provide to Bumble Bee Foods Quality Assurance a copy of HACCP plans. The thermal process must be submitted and approved by a thermal process authority acceptable to Bumble Bee Foods Quality Assurance.

Defects	
Defects Comments	Meat area in contact with the can with light orange scorch only; less than 10% with dark orange scorch.
Defect Description	No bones.

Chemistry	
pH	
Histamine	
Mercury	
Phosphate	Sodium Phosphates: Maximum usage shall be 0.5% total added phosphate, calculated as sodium phosphate, dibasic
Nitrites	
Water Activity	
Total Acidity	
EDTA	
Sulfites	
Indoles	
Aquaculture Drugs	
Additives	No additives or ingredients permitted, unless stated in purchase order or agreed prior to delivery. All ingredients must be listed on the Product Safety Sheet and approved by Bumble Bee Foods Quality Assurance. All ingredients are to be listed on the label ingredient listing.
Heavy Metals	
Natural Toxins	
Comments	

Microbiology	
Microbiology Comments	Commercially sterile. See BB approved PSS for Minimum Fo value and Thermal Process details.

CASE

Case Properties	
Case Type	Tray Case is a tray. The club packs are pallet wrap only. Club pack is a store display ready pallet.
Marking	USA: Refer to Bumble Bee Foods Quality Policy Reference number 2.6.1 d. Lot code, Best By,

	Container Code and other unique product attributes not already preprinted (such as case UPC, barcode, description) must be placed on the case.
Case Comments	ALL CANS, POUCHES OR KITS WILL BE PACKED IN CORRUGATED CARTONS OR TRAYS OVERWRAPPED WITH PLASTIC SHRINK WRAP. IMPRINTED CARTON OR TRAY AND CAN PACK LABEL SHALL CONFORM TO STANDARDS SET FORTH BY QUALITY ASSURANCE. Recommended tray specification, or equivalent, or better, or as approved by Bumble Bee Foods/Clover Leaf Seafoods: Printed Side: KS170, Middle corrugate: CS110 Flute B or CA125 Flute, Inside: KT125 or KI125 Board to be used on bottom of tray, if lower tray specification is used. Film overwrap used on trays will not deteriorate (break or tear) during the shelf-life of the product, including during normal handling conditions during transportation and storage. Film tensile strength 160 to 180 kg. /cm2, tear resistance 375 to 430 gf. Film will remain flexible and will not become brittle between -20°C to +40°C.
Cans per Case	12
Case Gross Weight	0
Case Gross Weight Tolerance	0
Item	12/50OZ CAN
SU Gross Weight	42.280

PALLET

Pallet Stacking Pattern					
Item	Cases per Pallet	Cases per Layer	Layers High	Tags	Pallet Comments
10000018582	40.0	8.0	5.0	US: Refer to Bumble Bee Foods QA Manual Procedure reference number 2.6.1 e.	Code List to be supplied for each container shipped. Coding system to be supplied annually to Bumble Bee Foods Quality Assurance, or as coding system is modified. Bumble Bee Foods Quality Assurance will request completing a Product Safety Sheet for each product.

SHIPPING PACKAGE

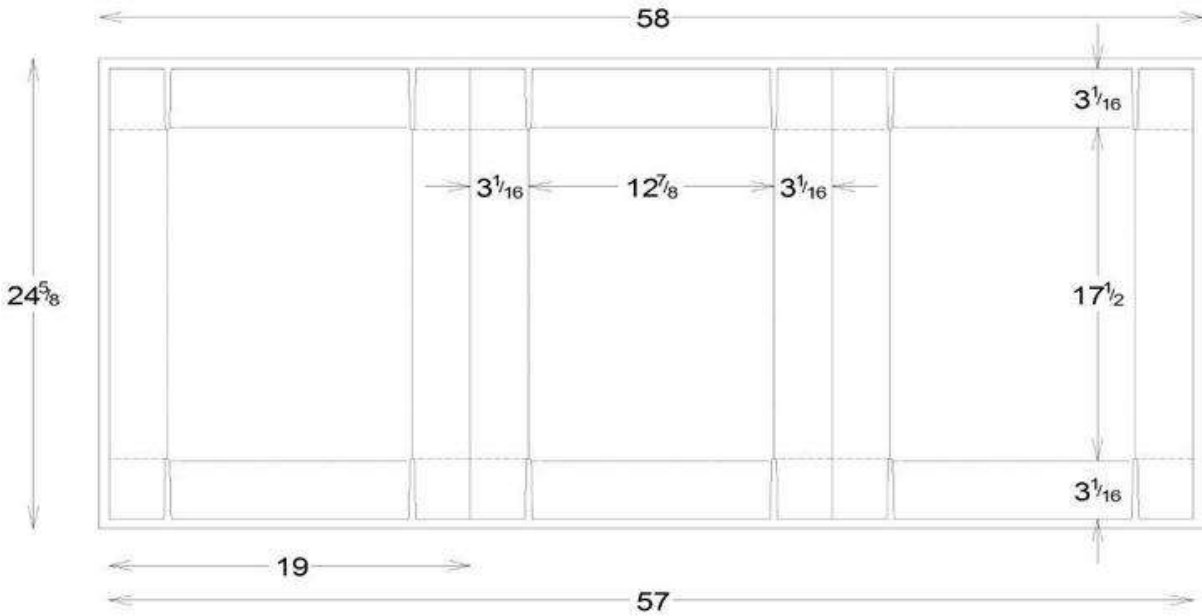
Shipping Package Properties	
Shipping Package Properties	
Slip Sheets	Shall be used or as per purchase order agreement.
Pack Size Description	12/50OZ
Shipping Package Comments	TRANSPORT OF THE PRODUCT SHALL BE UNDER CONDITIONS THAT WILL PREVENT DAMAGE TO THE CONTAINER. EACH PALLET OF FINISHED PRODUCT WILL BE WRAPPED WITH A MINIMUM OF 3 MIL. THICK PROTECTIVE STRETCH FILM. KEEP PRODUCT FROM FREEZING.

MISCELLANEOUS

Miscellaneous	
Recommended Handling	Shipped and stored in ambient temperatures. For food quality reasons, storage temperatures more than 100°F for extended periods should be avoided. Do not freeze.

CONFIRMATION OF RECEIPT

Customer Name	Signature	Date
---------------	-----------	------









FULLY COOKED & READY TO SERVE

SWEET SUE® RECIPE

Tropical Chicken Salad

- 1 50 Oz. Can Sweet Sue® Boneless Chicken
- 1 Cup Diced Celery
- 1-1/2 Cup Pineapple Chunks
- 2 Cups Seedless Grapes
- 1-1/2 Cup Diced Apple
- 1-1/4 Cup Walnut Pieces
- 1 Cup Grated Lemon Peel
- 1-3/4 Cup Mayonnaise or Salad Dressing

Blend all ingredients and chill before serving. Fill pineapple boat or shape and serve with fresh fruit.

Other Excellent Uses:

- Chicken Barbecue Sandwich Spreads
 - Chicken Pies
 - Chicken A la King
- All dishes calling for cooked chicken.



From the Kitchens of
Sweet Sue®

Boneless Chicken
with Broth

You can always count on delicious, home-style recipes From the Kitchens of Sweet Sue®.

Our recipes use only the finest ingredients to guarantee goodness for your family every time.

LOW FAT

10g Protein & 70 Calories
per serving

NET WT 50 OZ
(3 lb 2 oz)
1.42 kg

Serving Suggestion



Nutrition Facts	
Serving Size 2 oz (56g)	
Servings Per Container About 25	
Amount Per Serving	
Calories 70	Calories from Fat 25
% Daily Value*	
Total Fat 3g	5%
Saturated Fat 1g	5%
Trans Fat 0g	
Cholesterol 30mg	10%
Sodium 270mg	11%
Total Carbohydrate 1g	0%
Protein 10g	18%
Calcium 0%	Iron 2%
Not a significant source of dietary fiber, sugars, vitamin A, and vitamin C.	
* Percent Daily Values are based on a 2,000 calorie diet.	

INGREDIENTS: CHICKEN MEAT, CHICKEN BROTH, LESS THAN 2% OF MODIFIED CORN STARCH, SALT, SODIUM PHOSPHATE, GARLIC POWDER, CARRAGEENAN.

Distributed by:

Sweet Sue, P. O. Box 85362

San Diego, CA 92186-5362

QUESTIONS OR COMMENTS?
Call 1-800-533-3254

SWEET SUE PROOF OF PURCHASE



Product Name	12/500Z SSUE BONED CKN CAN		
Product Code			
Datafile Name	12-50oz ssue boned ckn can (11/17/2017)		
Load Ref.	18 I		
Cube Used	72.1 %	8	Case / Layer
Area Used	90.0 %	5	Layer / Load
Pallet type	chb4840	40	Case / Load
Truck Ref.	1 C	1000	Case / 53footer
Truck Area Used	40.9 %	25	Load / 53footer
Truck Cube Used	31.7 %		

	Length	Width	Height	Net	Gross	Volume
Case (OD)	16.937	12.750	7.125 in	42.280	42.280 lb	0.89 cuft
Product	46.624	38.250	35.625 in	1691.200	1691.200 lb	36.77 cuft
Load	48.000	40.000	41.185 in	1691.200	1761.200 lb	45.76 cuft
Product	624.000	40.000	82.370 in	42280.0	44030.0 lb	1189.79 cuft
53footer	636.000	96.000	102.000 in	44030.0	54030.0 lb	3604.00 cuft

