



## 8000 Series HANDWASHING STATION

Stern-Williams' first handwashing station is available as a wall-mounted fixture or an add-on to our drinking fountains or pedestals. Fabricated from steel and finished with a long-lasting powder coat, the Model 8100 is built to stand the test of time and endure weather.



### FEATURES

- All steel heavy-duty construction with welded and ground joints for a clean and tidy appearance.
- Stainless Steel (-SS) bodies available for harsh coastal environments.
- Timed faucet button with automatic shut-off.
- Water pressure range of 30-80 PSI.
- Flow rate is 2.2 GPM with adjustable metering cycle of 10-30 seconds.
- Manual faucet won't malfunction from sun, overheating, or time.
- Extra deep splash guard and bowl.
- Wall mounted fountain available in visible and concealed installation options.
- Mounting bracket sold separately.
- Single bottom plate for simple future maintenance.
- All flow paths are lead-free with reinforced stainless-steel tubing that comply with NSF-61 standards.
- Standard Woodland Green Finish with Optional colors.





## ORDERING OPTIONS

Part Number

**8100**

Pedestal mount handwash station



Part Number

**8220**

Wall mount fountain and handwash station with four bolt front mount

Part Number

**8200**

Wall mount handwash station with concealed mount

\*Recommended DMF-610 mounting bracket sold separately

Part Number

**8500**

Pedestal mount fountain with handwash station



Part Number

**8205**

Wall mount handwash station with four-bolt front mount

Part Number

**82**

Additional feature of Stern-Williams drinking fountain and pedestal models

\*see specific product spec sheets for ordering

Part Number

**8215**

Wall mount fountain and handwash station with concealed mount

\*Recommended DMF-610 mounting bracket sold separately

## DIMENSIONS

**8100** 38 1/4"H x 31"L x 10 3/4" Dia. Body/Surface Mount

**8200** 6"H x 20"L x 10 3/4" W

**8205** 6"H x 20"L x 10 3/4" W

**8215** 15"H x 20"L x 35"W

**8220** 15"H x 20"L x 35"W

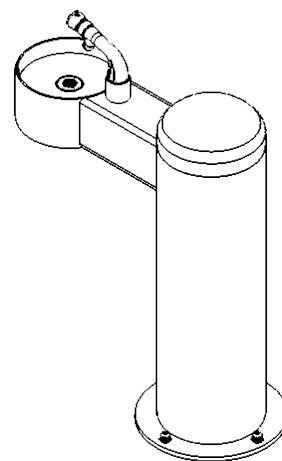
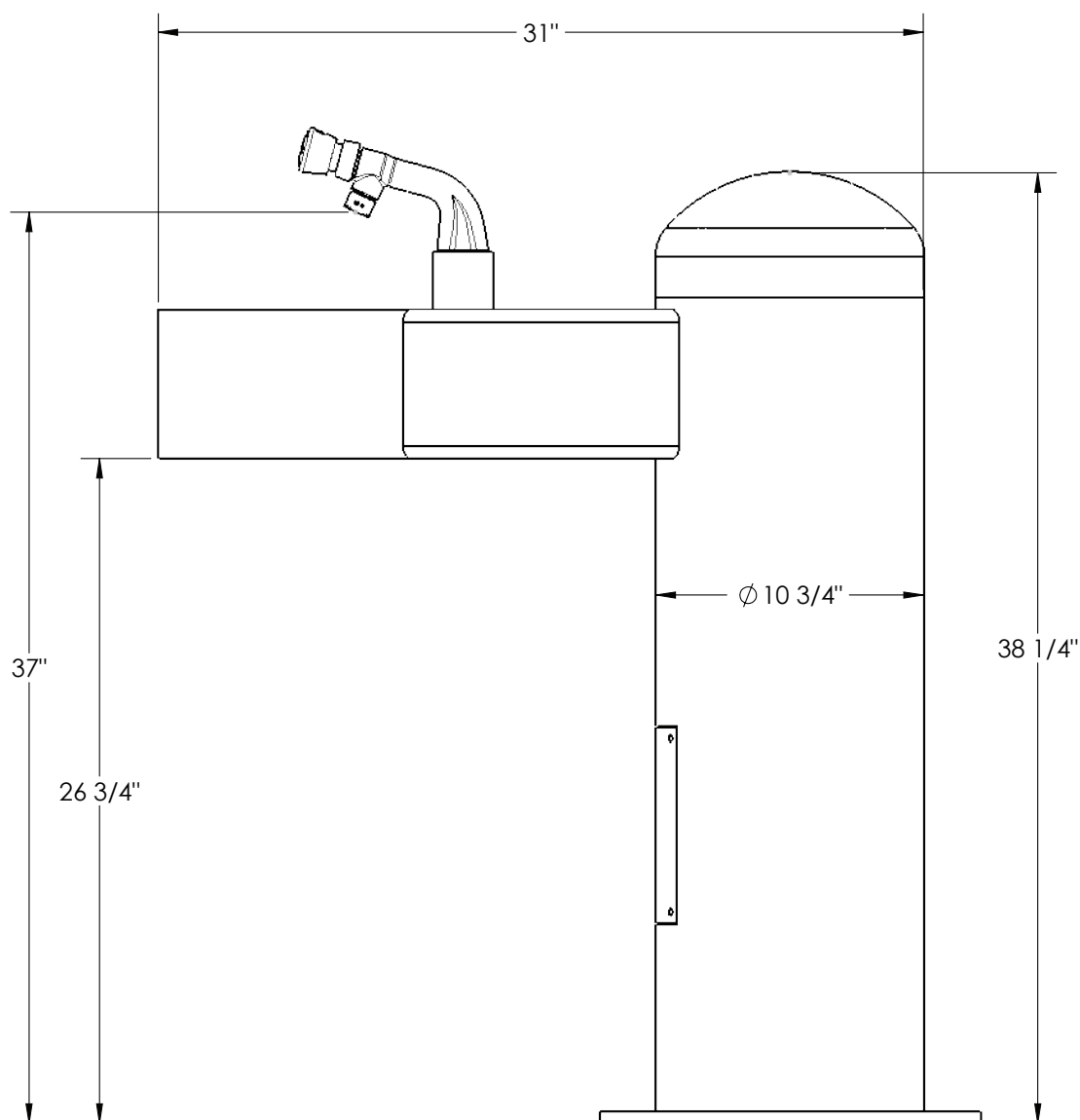
**8500** 40"H x 30 3/4"L x 10 3/4" Dia. Body/Surface Mount

**82** 6"H x 20"L x 10 3/4" W



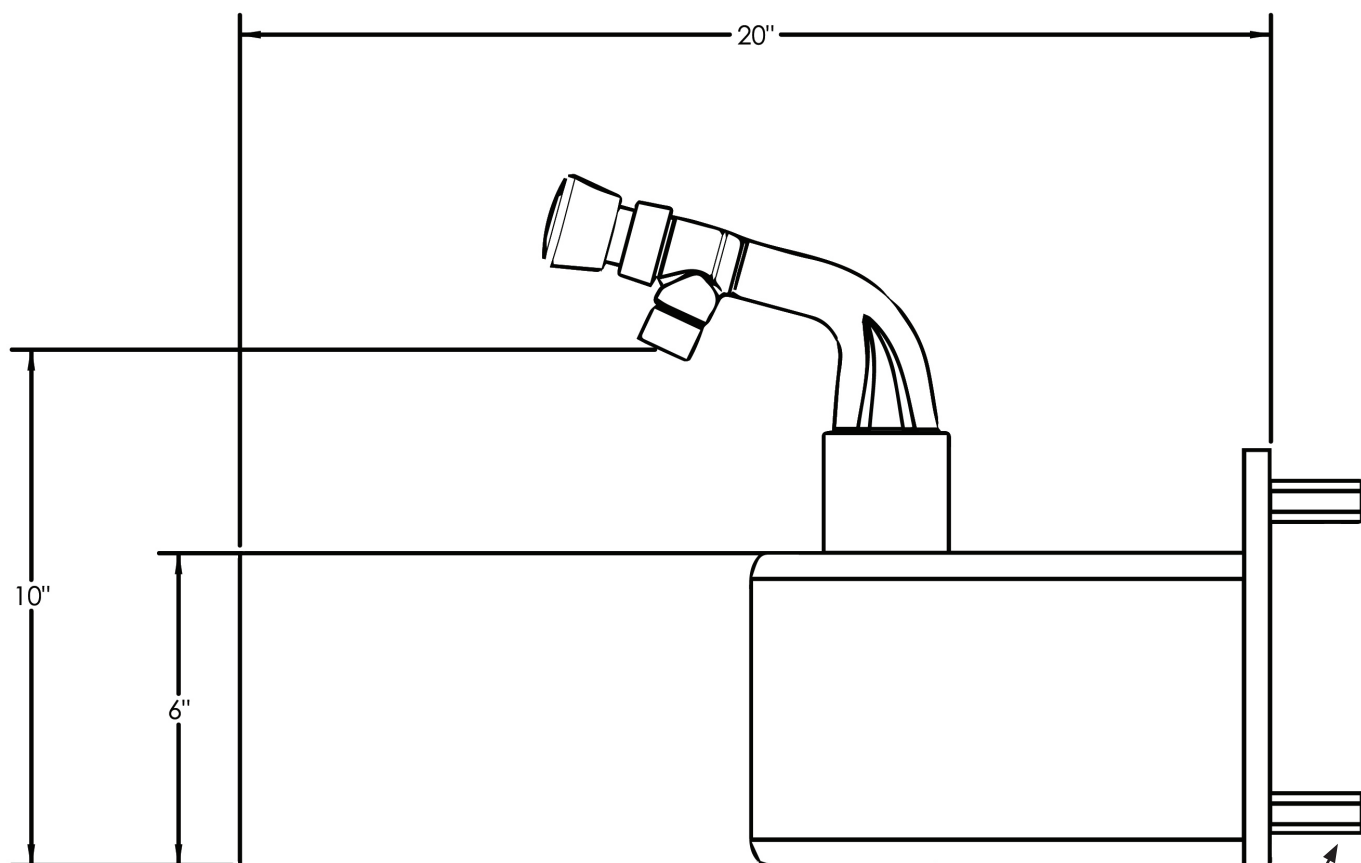
**ADA Compliant**

**8100**

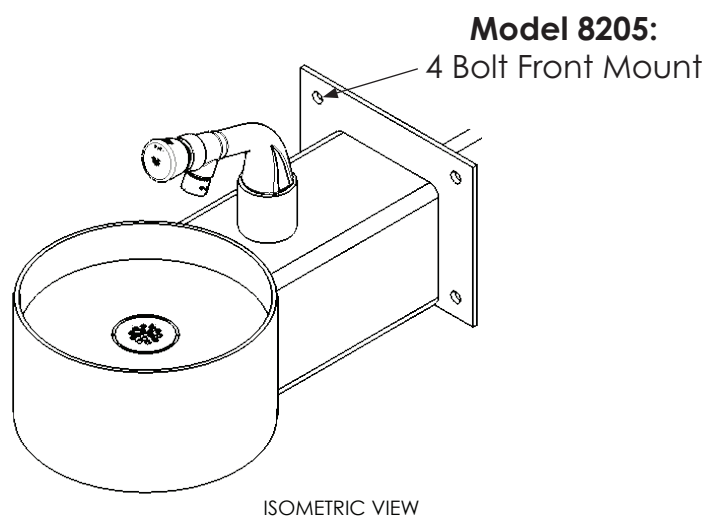


ISOMETRIC VIEW

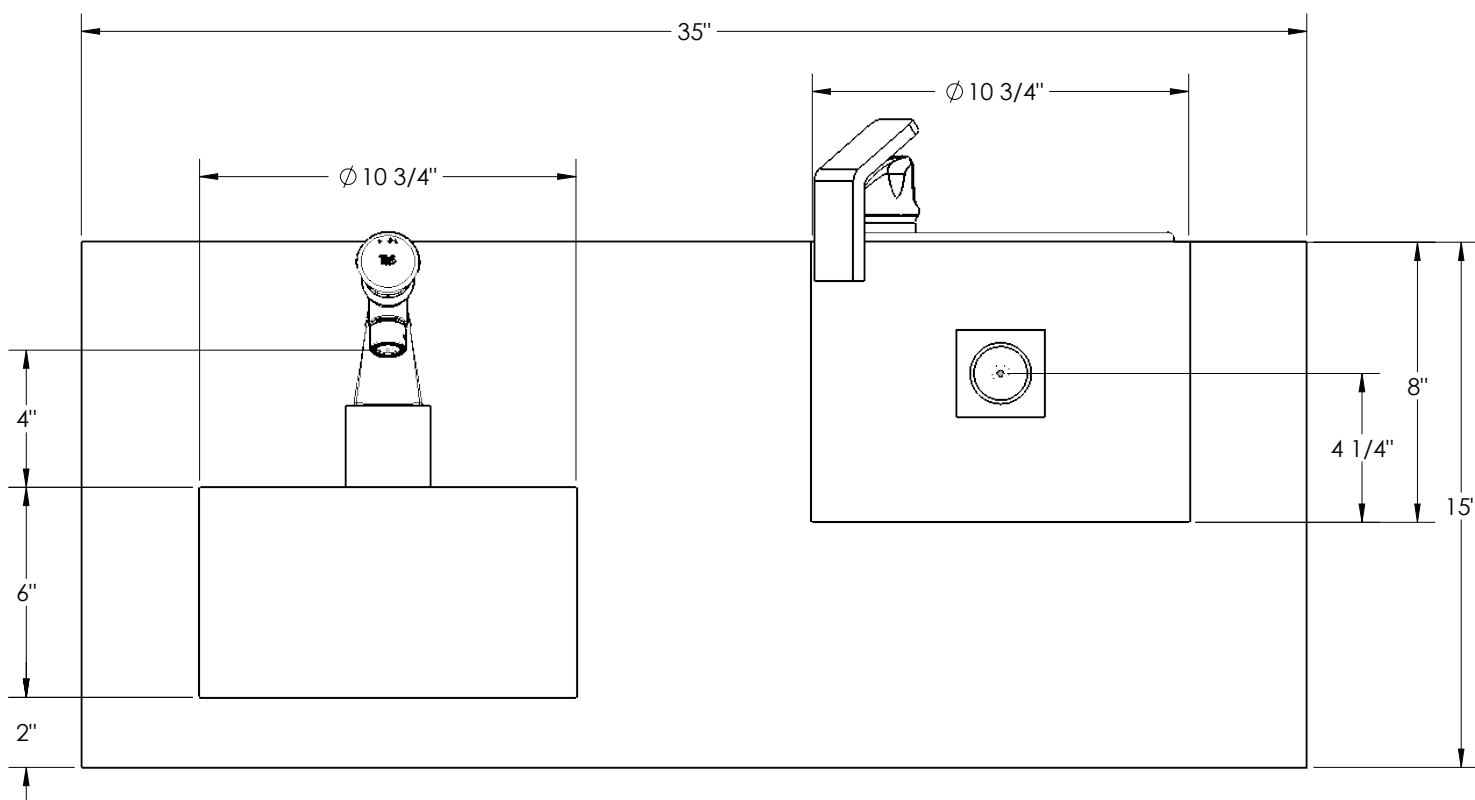
**8200/8205**



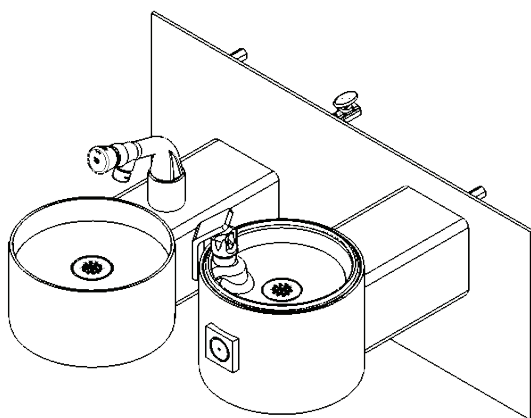
**Model 8200:**  
Concealed Mount



**8220/8215**

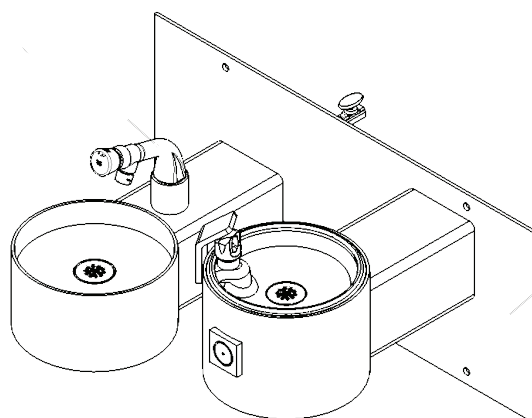


**Model 8215:**  
Concealed Mount



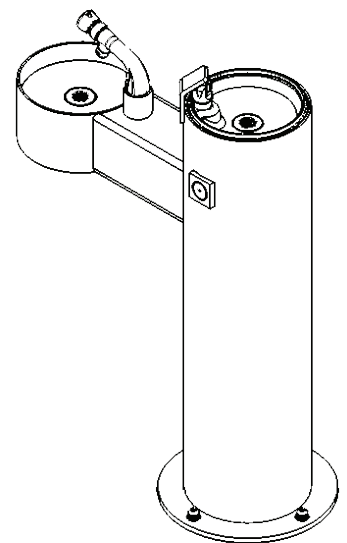
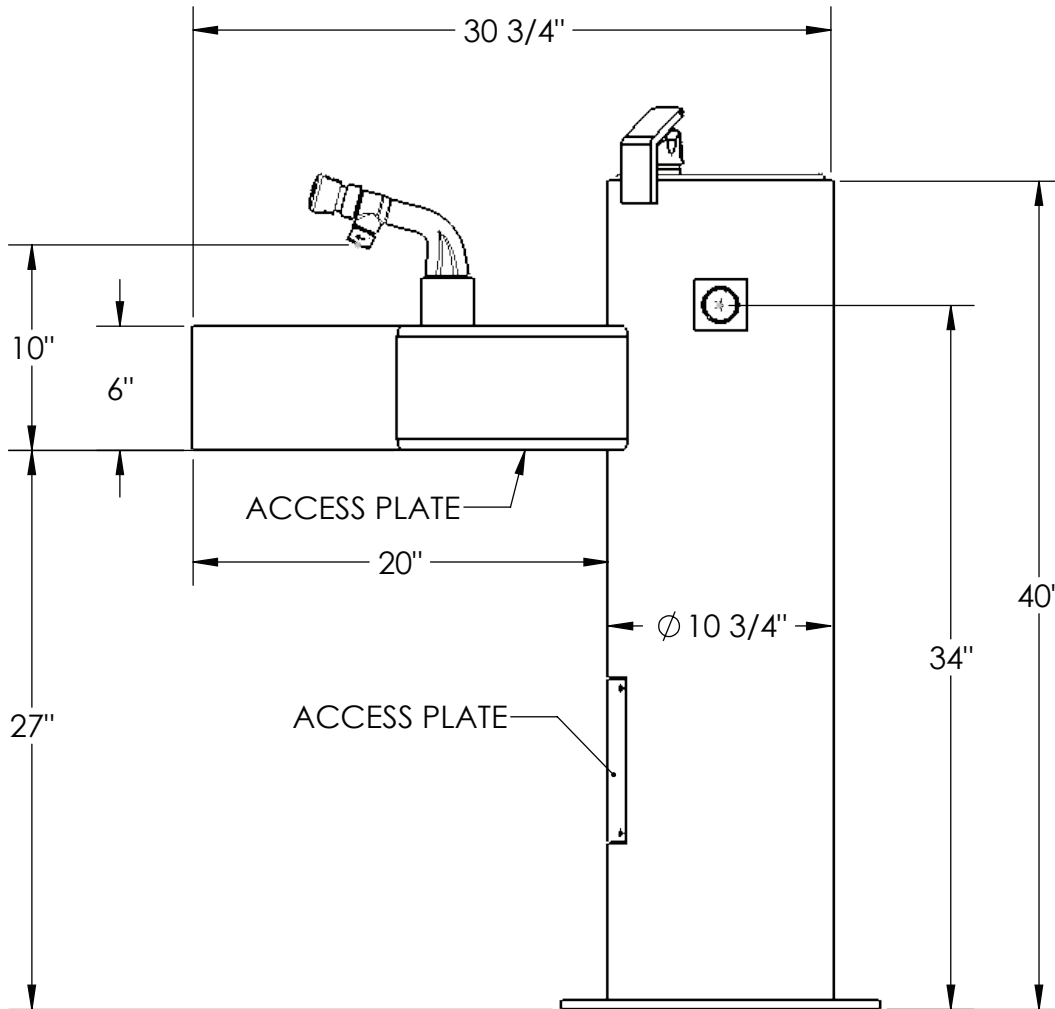
ISOMETRIC VIEW

**Model 8220:**  
4 Bolt Front Mount



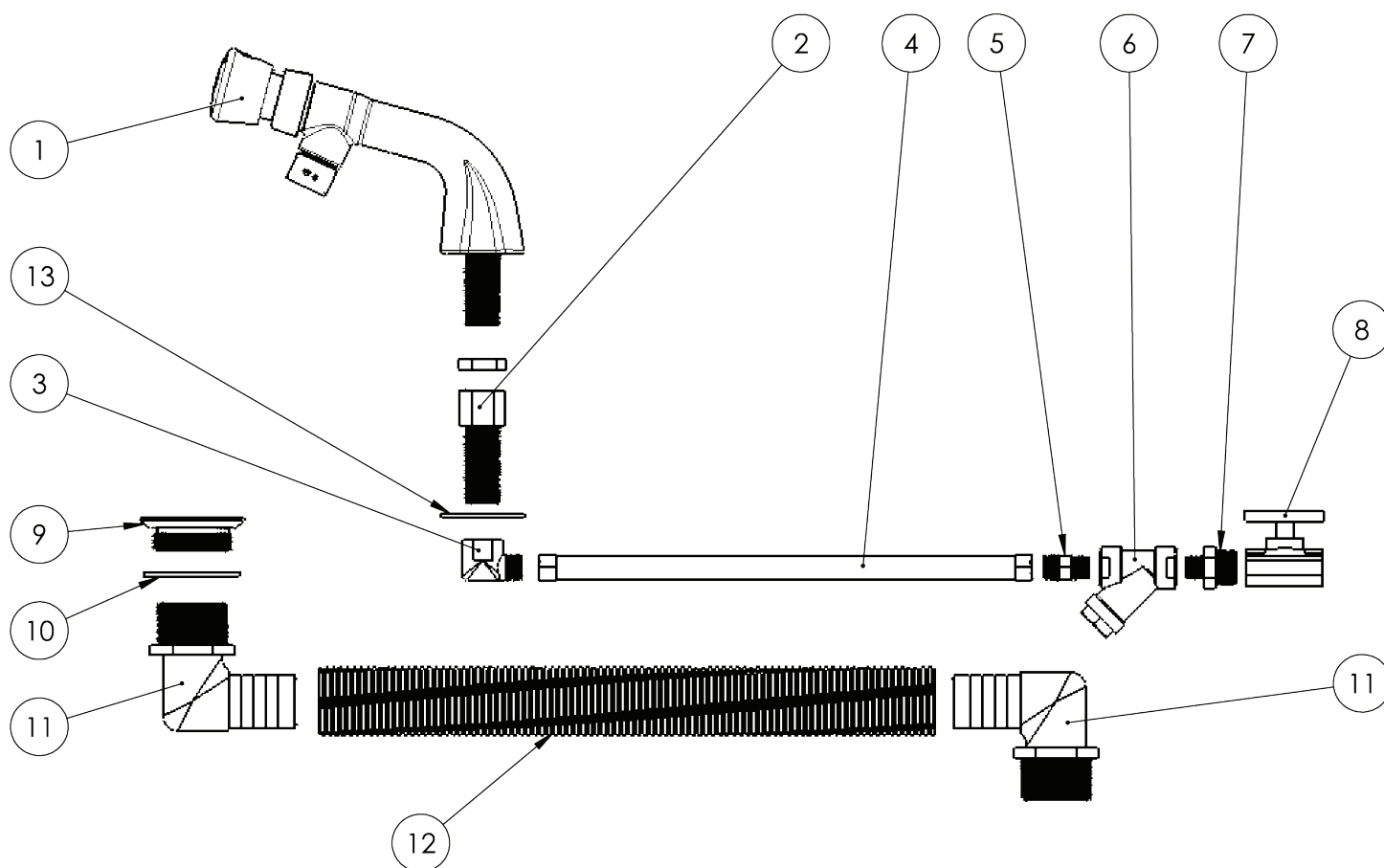
ISOMETRIC VIEW

8500



ISOMETRIC VIEW

## 8200 PARTS



ID	Part Number	Description	ID	Part Number	Description
1	S399-0006	Faucet assembly	9	S231-0260	CP theft-proof drain
2	S310-0011	Hex adapter	10	S336-0001	Bowl gasket
3	S300-0001	Brass elbow	11	S337-0005	Hose barb elbow
4	S231-0196	Braided connector	12	S337-0025	Flex hose
5	S310-0012	Brass adapter	13	S320-0026	Brass washer
6	S337-0041	Y strainer			
7	S310-0001	Brass adapter			
8	S231-0221	Stop slot lockshield			