



Item#: _____
 Quantity: _____
 Model #: E1-STE-2H
 Project #: _____

E1 Single-Sided Sorting Table



Standard Features:

- Single-sided sorting table with elevated basket holder and backsplash
- Works exclusively with the Steril-Sil E1 Silverware Handling System
- Holds two (2) Steril-Sil E1-BS-6OE-W Drop-In Baskets horizontally 12" above the working surface at an angle for easy sorting
- Optional table drain for easy cleaning
- Open base allows room for one (1) Steril-Sil E1-SK-2 Soak Sink
- Includes a backsplash
- Non-marking casters, two (2) locking
- All welded 304 stainless steel construction
- 44" x 32" x 54" dimensions
- Made in the U.S.A.

Model #: E1-STE-2H

Patent Pending

Product Specification:

Steril-Sil model #E1-STE-2H Single-Sided Sorting Table with elevated basket holder. Works exclusively with the Steril-Sil E1 Silverware Handling System and holds two (2) Steril-Sil E1-BS-6OE-W Drop-In Baskets horizontally. Open base allows for one (1) E1-SK-2 soak sink to rest below the table. Includes four (4) non-marking casters, two (2) locking. All welded 304 stainless steel construction. Overall dimensions are 44" x 32" x 54". Made in the U.S.A.

Steril-Sil, LLC

1050 Commonwealth Avenue
 Boston, MA 02215
 Phone: 800-784-5537
 Fax: 617-739-5063
 Email: sales@sterilsil.com
 www.sterilsil.com

Notes:



E1 Single-Sided Sorting Table



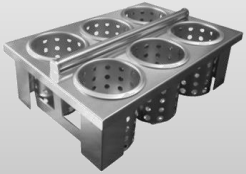
Model #: E1-STE-2H

E1 Single Sided Sorting Table

Designed for use with Steril-Sil E1 Silverware Handling System

Model	Description	Length	Width	Height
E1-STE-2H	E1 System sorting table with integrated E1 drop-in basket holder (holds 2 horizontally)	44"	32"	54"

Available Accessories:



E1-BS-60E-W
Drop-In Silverware basket



E1-SK-2
E1 Two-Basket Soak Sink



S-500
Silverware Cylinder



E1-FTA-1V
Flat Top Adapter