



Item#: _____
Quantity: _____
Model #: E1-SK-2
Project #: _____

E1 Two-Basket Silverware Soak Sink



Standard Features:

- Two-basket silverware soak sink
- Integrated handle-lift holds the Steril-Sil E1-BS-60E-W Silverware Basket handle in the upright position for easy lift-out while in the soak solution
- Lever waste drain
- Non-marking casters
- All welded 14-gauge, 304 stainless steel construction
- 28" x 24" x 21" dimensions
- Made in the U.S.A.

Model #: E1-SK-2

Patent Pending

Product Specification:

Steril-Sil model #E1-SK-2 Two-Basket Silverware Soak Sink. Works exclusively with the Steril-Sil E1 Silverware Handling System and holds two (2) Steril-Sil E1-BS-60E-W Drop-In Silverware Baskets. Integrated handle-lift holds silverware basket handles in the upright position for lift-out from solution. Includes four (4) non-marking casters and lever drain. All welded 14-gauge, 304 stainless steel construction. Overall dimensions are 28" x 24" x 21". Made in the U.S.A.

Steril-Sil, LLC

1050 Commonwealth Avenue
Boston, MA 02215
Phone: 800-784-5537
Fax: 617-739-5063
Email: sales@sterilsil.com
www.sterilsil.com

Notes:

E1 Two-Basket Silverware Soak Sink



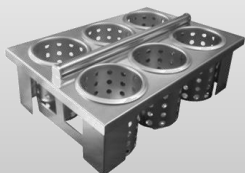
Model #: E1-SK-2

E1 Two-Basket Silverware Soak Sink

Designed for use with Steril-Sil E1 Silverware Handling System

Model	Description	Length	Width	Height
E1-SK-2	E1 System 2-basket soak sink with integrated basket handle lifts for E1 System baskets	28"	24"	21"

Available Accessories:



E1-BS-60E-W
Drop-In Silverware basket



E1-STE-2H
E1 Sorting Table



S-500
Silverware Cylinder



E1-CRT-2V
E1 2-Hole Cart