



Item#: _____
 Quantity: _____
 Model #: E1-CRT-
 Project #: _____

E1 Dispensing Carts



Standard Features:

- E1 dispensing cart
- Works exclusively with the Steril-Sil E1 Silverware Handling System
- Configurable design allows adaptation for changing needs throughout the day including:
 - Silverware dispensing
 - Napkin dispensing
 - Straw dispensing
 - Tray dispensing
 - Glass dispensing
 - Various hotel pan configurations
- Dispenser setback allows for easy tray or glass rack access
- Standard side and back panels to prevent tray and glass racks from sliding through
- Integrated handle grasps
- Bottom shelf holds trays or glass racks
- Locking, non-marking casters
- Four (4) corner bumpers
- All welded 304 stainless steel construction
- Made in the U.S.A.

Model #: E1-CRT36-3V (top)

Model #: E1-CRT36-1V1HP (middle)

Model #: E1-CRT24-2V (bottom)

Shown with E1 accessories
 Patent Pending

Product Specification:

Steril-Sil model #E1-CRT- Dispensing Cart. Works exclusively with the Steril-Sil E1 Silverware Handling System and accepts E1 System inserts. Configurable dispensing system for silverware, napkins, straws, trays, glass racks and more. Includes back and side panels, four (4) corner bumpers and locking, non-marking casters. All welded 304 stainless steel construction. Made in the U.S.A.

Notes:

Steril-Sil Company, LLC
 Phone: 800-784-5537
 Fax: 617-739-5063
 Email: quotes@sterilsil.com
 www.sterilsil.com

E1 Dispensing Carts (cont'd)



Model #: E1-CRT24-2V



Model #: E1-CRT36-3V



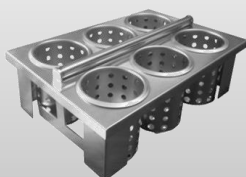
Model #: E1-CRT36-1V1HP

E1 Dispensing Carts

Designed for use with Steril-Sil Silverware Handling System

Model #	Description	Overall Dimensions				Capacity				Ship #
		Length	Width	Front Height	Rear Height	E1 Inserts	Full-size pans	14x18 Trays	5" Glass Racks	
E1-CRT-2V	2-hole E1 dispensing cart holds (2) E1 inserts vertically	24"	25.5"	33.5"	39"	2	0	75	4	120 lbs
E1-CRT-3V	3-hole E1 dispensing cart holds (3) E1 inserts vertically	36"	25.5"	33.5"	39"	3	0	150	4	130 lbs
E1-CRT36-1V3HP	Holds 1 E1 insert left and (1) full-size pan on right	36"	25.5"	33.5"	39"	1	1	150	4	130 lbs

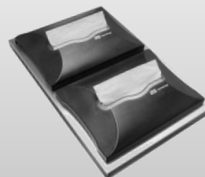
Available Accessories:



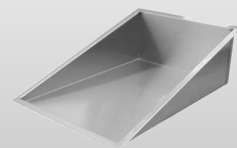
E1-BS-6OE-W
Drop-In Silverware basket



E1-1N5-2SD-1VH
Napkin & Straw Dispenser



E1-N5D-1VH
Dual Napkin Dispenser



E1-FTA-1V
Flat Top Adapter

See the E1 Accessories page for additional options and details