

AQUAKING[®] PSC20

20" GAC/Phosphate Cartridge

#790PSC20

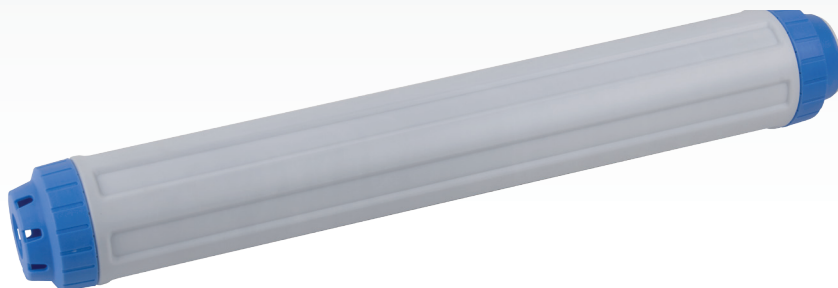
Food Service System Drop-In Cartridge

Features

- Combines slow dissolving phosphate and premium, dedusted 20x50 mesh GAC
- Granular activated carbon effectively reduces unwanted tastes, odor and chlorine in drinking water.
- Phosphate reduces water-related equipment problems caused by scale buildup from dirt and dissolved minerals
- Constructed totally from FDA grade materials and media.
- Designed to sequester iron and hardness to prevent scaling and precipitation reactions in beverage, steam and ice making equipment.
- Fits 20" housings

Applications

This cartridge uses a unique combination of 8 oz. of crystalline polyphosphate and premium granular activated carbon so that you can feed the purest water possible to your large beverage equipment, ice machines and floor steamers! It is also great for pretreatment of small Reverse Osmosis systems requiring dechlorination and anti-scaling.



Technical Data

Flow Rate	0.2 - 0.5 gpm continuous
	0.5 - 3.0 gpm intermittent
Capacity	6,000 gallons
Dimensions	20"H x 2.5"W

Installation & Operation Tips

- Change cartridges on a regular 6 month preventative maintenance program.
- Always flush the filter cartridge at time of installation and cartridge change

