

ShelfMaster Pre-Rinse with Add-On Faucet

ROYAL SERIES



Standard Features

- Pre-assembled to cut installation time
- Stainless steel wall bracket, riser, and hose
- 1/4 turn ceramic cartridge valves
- Optional shower pattern brass nozzle included
- Mounting kit (21-194L) includes (2) locknuts, (2) rossette washers, (2) rubber o-rings and (2) shanks

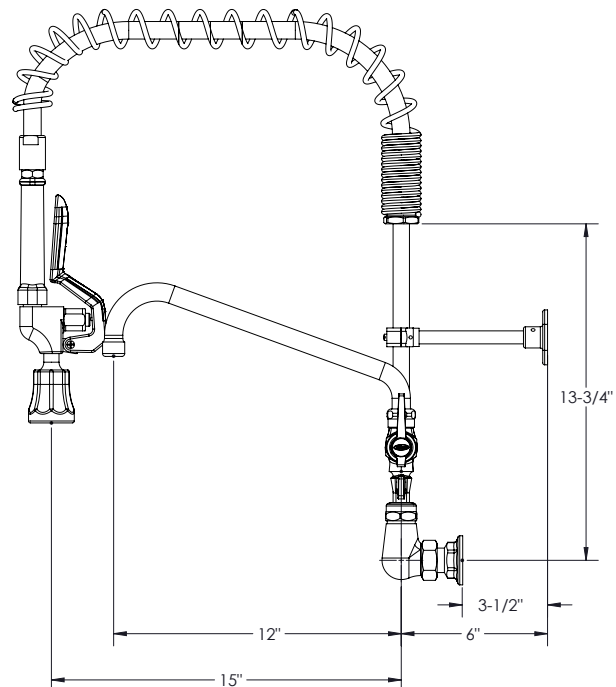
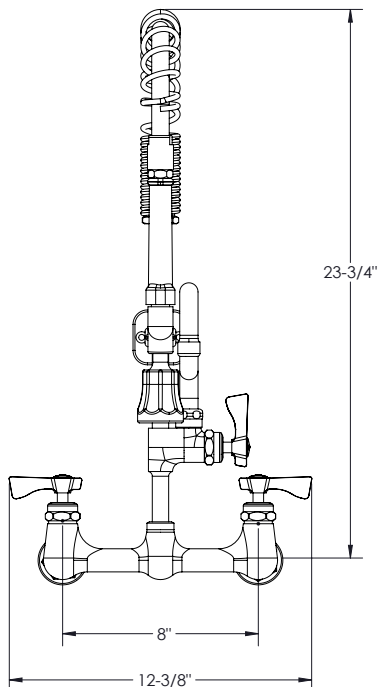
Specifications

| | |
|-------------|---|
| Water Inlet | 1/2" NPS Male; Kit Installed |
| Temp. Range | 40°F - 180°F |
| Rough In | 7/8" Round Hole 8" on Center |
| Flow Rate | 1.15 GPM (Spray Head) 1.8 GPM (Faucet) |
| Material | Chrome Plated Brass |
| Weight | 15 lbs. |

| Model | Description |
|---------|---|
| 18-725L | 8" Center ShelfMaster Pre-Rinse Includes Add-On Faucet w/ 12" Spout |

Product Compliance

- NSF-61 & NSF/ANSI 372
- NSF/ANSI/CAN 61: Q<1
- ASME A112.18.1-2012/CSA B125.1-12
- Massachusetts Listed



Warning:

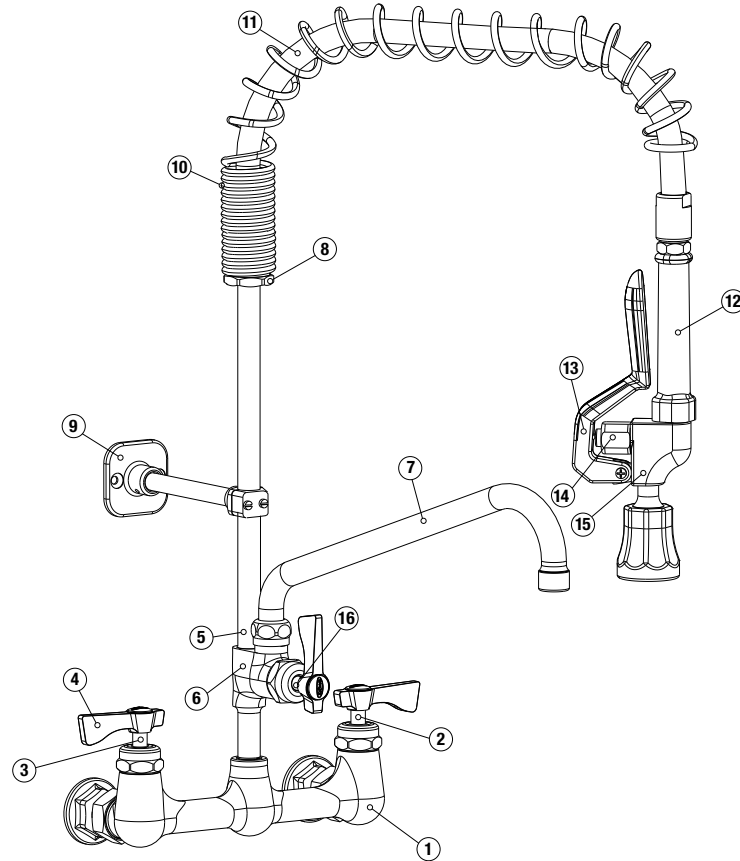
Plumbing connections should be made by qualified personnel who will observe all applicable plumbing, sanitary and safety codes

California Prop 65 Warning:

This product can expose you to chemicals including lead and lead compounds, which are known to the State of California to cause cancer and birth defects or other reproductive harm. For more information go to www.cdph.ca.gov/Programs/CID/DCDC/Pages/ToxicSubstances/HazardousSubstances.aspx

ShelfMaster Pre-Rinse with Add-On Faucet

ROYAL SERIES



Replacement Parts

| No. | Model | Description |
|-----|------------------------|--|
| 1 | 21-108L | Royal Series 8" Center Wall Mount Base for Pre Rinse |
| 2 | 21-308L | Royal Series 1/4 Turn Cold Ceramic Cartridge Valve with Handle |
| 3 | 21-309L | Royal Series 1/4 Turn Hot Ceramic Cartridge Valve with Handle |
| 4 | 21-306 | Royal Series Faucet Handle Kit (Hot & Cold handles) |
| 5 | 21-160-8L 21-160-3L | 8" Stainless Steel Riser Pipe (23-3/4" Height) 3" Stainless Steel Riser Pipe (16-3/4" Height) |
| 6 | 21-139L | Add-On Faucet with 12" Spout |
| 7 | 21-423L | Royal Series 12" Spout |
| 8 | 21-663L | ShelfMaster Spring Retainer |
| 9 | 21-662 | ShelfMaster Stainless Steel Wall Bracket |
| 10 | 21-670 | ShelfMaster Stainless Steel Spring |
| 11 | 21-181L | ShelfMaster Stainless Steel Hose with Grip |
| 12 | 21-164L | Royal Series Grip |
| 13 | 21-171 | Royal Series Pre-Rinse Replacement Handle |
| 14 | 21-302L | Royal Series Pre-Rinse Button Valve |
| 15 | 21-129L | Royal Series Pre-Rinse Spray Head |
| 16 | 21-308L | Royal Series 1/4 Turn Cold Ceramic Cartridge Valve with Handle (Fits Add-On Faucet) |

Warning:

Plumbing connections should be made by qualified personnel who will observe all applicable plumbing, sanitary and safety codes

California Prop 65 Warning:

This product can expose you to chemicals including lead and lead compounds, which are known to the State of California to cause cancer and birth defects or other reproductive harm. For more information go to www.cdph.ca.gov/Programs/CID/DCDC/Pages/Lead%20and%20Lead%20Compounds.aspx