

Refrigerated Service Case

Lengths include 1" end panels

- HV38R 40"L x 42"D x 51-1/4"H
- HV48R 50"L x 42"D x 51-1/4"H
- HV56R 58"L x 42"D x 51-1/4"H
- HV74R 76"L x 42"D x 51-1/4"H
- HV96R 98"L x 42"D x 51-1/4"H



MODEL SHOWN: HV56R

STANDARD FEATURES

- Breeze™ w/EnergyWise s/c refrigeration
- Clear glass shelves, lighted (T-8)
- Compressor air rear intake, front discharge. Toe kick cannot be blocked
- Condensate pan (self-contained refig. only)
- Curved single pane, lift-up front glass w/o lock
- Flat front panel
- Integrated average product temperature of 40°F or less
- One year parts & labor; 5 year compressor warranty
- Shelving removable and adjustable on 1" centers
- T-8 top & shelf lights

Features	Standard	Options
EXTERIOR COLOR	<input type="checkbox"/> Laminated (non-premium) Confirm pattern/grain direction	<input type="checkbox"/> Laminated (premium) Confirm pattern/grain direction <input type="checkbox"/> Stainless steel (includes rear of case)
INTERIOR COLOR	<input type="checkbox"/> Black	<input type="checkbox"/> Stainless steel <input type="checkbox"/> White
REAR EXTERIOR COLOR	<input type="checkbox"/> Painted - White	<input type="checkbox"/> Painted - Black <input type="checkbox"/> Stainless steel (w/stainless ext. only)
TRIM COLOR	<input type="checkbox"/> Black	<input type="checkbox"/> Silver
BASE	<input type="checkbox"/> Levelers	<input type="checkbox"/> 6"H legs <input type="checkbox"/> Casters (n/a with remote)
END PANEL LEFT	<input type="checkbox"/> Full end panel w/mirror interior	<input type="checkbox"/> Case to case glass end <input type="checkbox"/> Cutaway with glass <input type="checkbox"/> No end panel (for same case to case connect)
END PANEL RIGHT	<input type="checkbox"/> Full end panel w/mirror interior	<input type="checkbox"/> Case to case glass end <input type="checkbox"/> Cutaway with glass <input type="checkbox"/> No end panel (for same case to case connect)
UPPER REAR	<input type="checkbox"/> Clear glass rear sliding doors w/o lock	<input type="checkbox"/> Reflective glass rear sliding doors w/o lock
ELECTRICAL CONNECT	<input type="checkbox"/> 6' straight blade power cord (self-cont.)	<input type="checkbox"/> 6' locking power cord (self-cont.) <input type="checkbox"/> Electrical leads (remote)
REFRIGERATION	<input type="checkbox"/> Breeze™ w/EnergyWise s/c refrigeration	<input type="checkbox"/> Note: Remote doesn't incl Conds unit. Floor drain reqd. <input type="checkbox"/> Remote w/thermostat, solenoid & TXV
MISCELLANEOUS		<input type="checkbox"/> Front glass lock <input type="checkbox"/> LED 3500K lights <input type="checkbox"/> Rear door lock <input type="checkbox"/> Second year parts & labor warranty (excludes compressor)

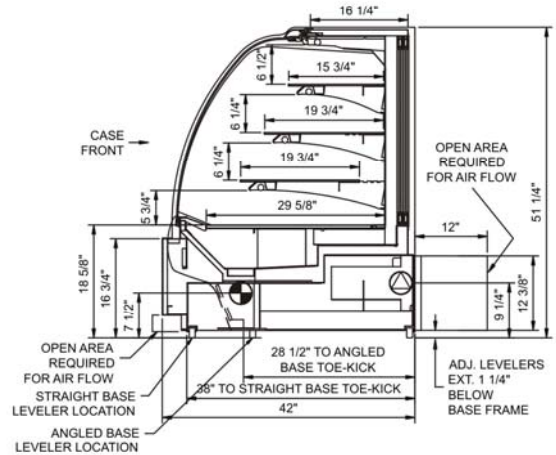
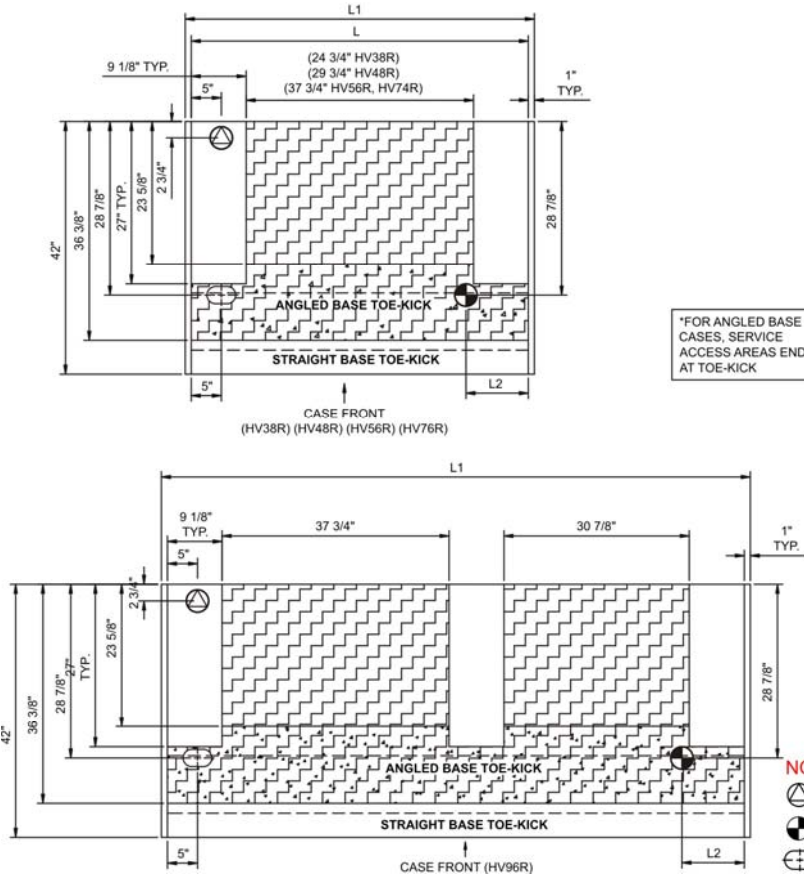
ENCORE®

Product Specifications

Intended Environment: Type I - Designed to operate in ambient conditions of 75°F with 55% relative humidity unless noted otherwise in system information below.		
Zone	Intended Product To Be Displayed	Integrated Prod Temp ° F
All	Unpackaged refrigerated products	40

PLAN VIEW

SIDE VIEW



- NOTE: ALL DIMENSIONS APPROXIMATE**
- ELECTRICAL JUNCTION BOX (SUPPLIED WITH 6\"/>
 - REMOTE FLOOR SINK & UTILITIES ACCESS AREA.
 - LOCATION OF DRAIN TUBE FOR REMOTE REF. ONLY (SUPPLIED WITH 1/2\"/>
 - SELF-CONTAINED CASE SERVICE ACCESS AREA.
 - REFRIGERATION LINE CONNECTION.
 - DRY CASE SERVICE ACCESS AREA.

Model Technical Specifications															
Model	L"	L1"	L2"	System Circuit Volts		Phs	Freq	Amps ***	Watts	Wires	NEMA Plug	SST	BTUH	Ship Wt	
HV38R	38.00	40.00	10.38	Remote(Type I)	Circuit #1	110-120	1	60	2.03	206	2+G	Leads Multiple	24.00	2445	800
				Self-Contained	Circuit #1	110-120	1	60	10.13	762	2+G	5-15P or L5-15P	N/A	N/A	
HV48R	48.00	50.00	10.38	Remote(Type I)	Circuit #1	110-120	1	60	2.66	263	2+G	Leads Multiple	24.00	2850	850
				Self-Contained	Circuit #1	110-120	1	60	12.00	1,322	2+G	5-15P or L5-15P	N/A	N/A	
HV56R	56.00	58.00	10.38	Remote(Type I)	Circuit #1	110-120	1	60	3.15	319	2+G	Leads Multiple	24.00	3289	900
				Self-Contained	Circuit #1	110-120	1	60	13.21	1,465	2+G	5-15P or L5-15P	N/A	N/A	
HV74R	74.00	76.00	10.38	Remote(Type I)	Circuit #1	110-120	1	60	3.49	348	2+G	Leads Multiple	24.00	3832	1,300
				Self-Contained	Circuit #1	110-120	1	60	16.00	1,691	2+G	5-20P or L5-20P	N/A	N/A	
HV96R	96.00	98.00	10.38	Remote(Type I)	Circuit #1	110-120	1	60	4.44	448	2+G	Leads Multiple	24.00	4920	1,400
				Self-Contained	Circuit #1	110-120	1	60	16.00	1,771	2+G	5-20P or L5-20P	N/A	N/A	

*** Does not include electric defrost on freezer models.

Regulatory Approvals:	
All Models	Accordance with AHRI Std 1200 ETL Listed to UL 471 ETL Listed to CAN/CSA 22.2 No. 120 ETL Sanitation to NSF 7

- Important Notes:**
- 1) ELECTRICAL NOTE: If GFCI is required, a GFCI breaker MUST be used in lieu of a GFCI receptacle
 - 2) 43" minimum door entry clearance required (without shipping skid).
 - 3) Compressor air-Compressor air rear intake, front discharge. Toe kick cannot be blocked.
 - 4) Units are supplied with levelers. They must be adjusted during installation to ensure the unit is level and plumb. Dimensions reflect levelers extended 1 1/4".

