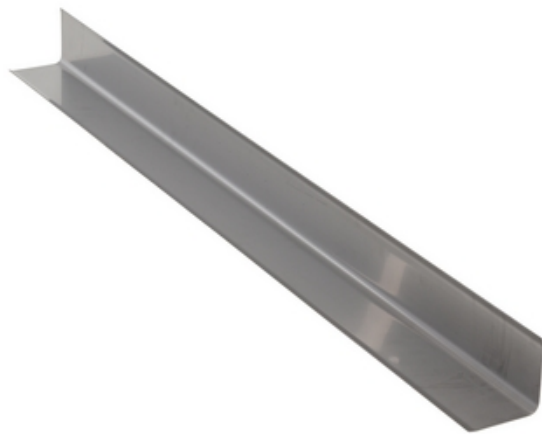




Stainless Steel Corner Guards





Provides for quick and easy corner protection. Excellent corrosion resistance. Made from 1/16"" thick type 304 stainless steel. Mounting hardware/adhesive is NOT included.

- Designed to provide quick and easy corner protection
- Type-304 stainless steel provides excellent corrosion resistance
- Durable and attractive construction can withstand rugged use
- Protector design can be securely attached to corners with glue or construction adhesive



Model & Specs



Model #	Description	Attributes	Net Wt. (lbs)
<div>SS-48</div> <div></div>	304 Stainless Steel Square Corner Guard 48 In. x 3-1/2 In. x 3-1/2 In. Silver	Steel Thickness (in.): 1/16 Steel Type: 304	7
<div>SS-48R</div> <div></div>	304 Stainless Steel Round Corner Guard 48 In. x 3-1/2 In. x 3-1/2 In. Silver	Steel Thickness (in.): 1/16 Steel Type: 304	6

Our Customer Service Associates Are Here To Assist You!
Call Vestil At 260-665-7586 Or info@vestil.com