

ADA Compliant

This Space for Architect/Engineer Approval

Job Name _____ Date _____

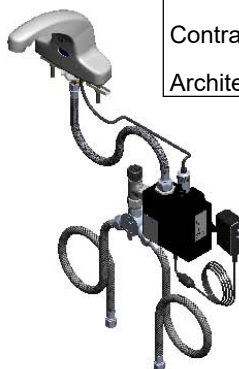
Model Specified _____ Quantity _____

Customer/Wholesaler _____

Contractor _____

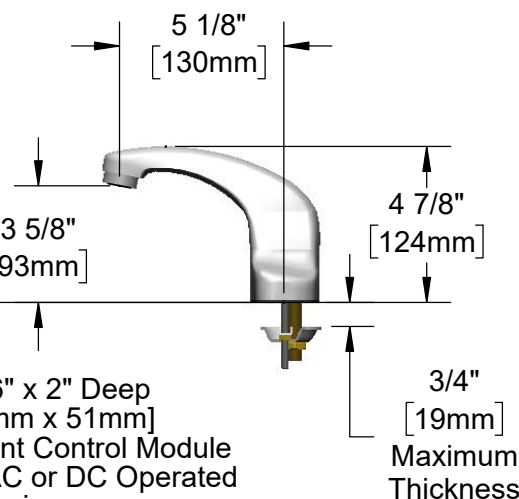
Architect/Engineer _____

Polished Chrome
Plated Cast Spout w/
B-0199-09-WS
1.5 GPM Vandal Resistant
Aerator & Key



24" [610mm]
Sensor Cable

1/2" NPSM x 1/4" NPSM
x 18" [457mm] Flexible
Stainless Steel Hose



Mounting Surface

4"
[102mm]

Removable
Strainer

3 5/8" x 4 3/16" x 2" Deep
[92mm x 106mm x 51mm]
Water Resistant Control Module
Box (Black), AC or DC Operated
w/ (4) AA Batteries

100-240 VAC Adapter
w/ 144" [3658mm]
Double Power Cord
(Remove Rubber Plugs
in Module to Connect.)

(2) 3/8" Compression x 1/2" NPSM
18" [457mm] Flexible Stainless Steel
Supply Hoses

Mechanical Mixing Valve
w/ Integral Check Valves

Rough-In Requirement:

- (1) \varnothing 1" [25mm] Center Shank Mounting Hole
- (2) \varnothing 1/2" [13mm] Mounting Stud Holes on 4" [102mm] Centers

Model Number

5EF-2D-DS-WS

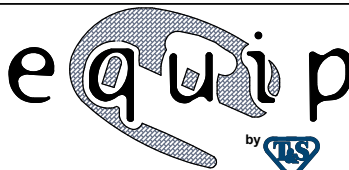
Product Specifications:

Electronic Faucet: 4" Deck Mount Cast Spout Faucet, VR 1.5 GPM Aerator, AC-DC Control Module, Temperature Control Mixing Valve, Integral Check Valves & (2) 18" Flexible Supply Hoses

Product Compliance:

ASME A112.18.1 / CSA B125.1
NSF 61 - Section 9
NSF 372 (Low Lead Content)
ANSI A117.1 (ADA)
EPA WaterSense
UL 1951

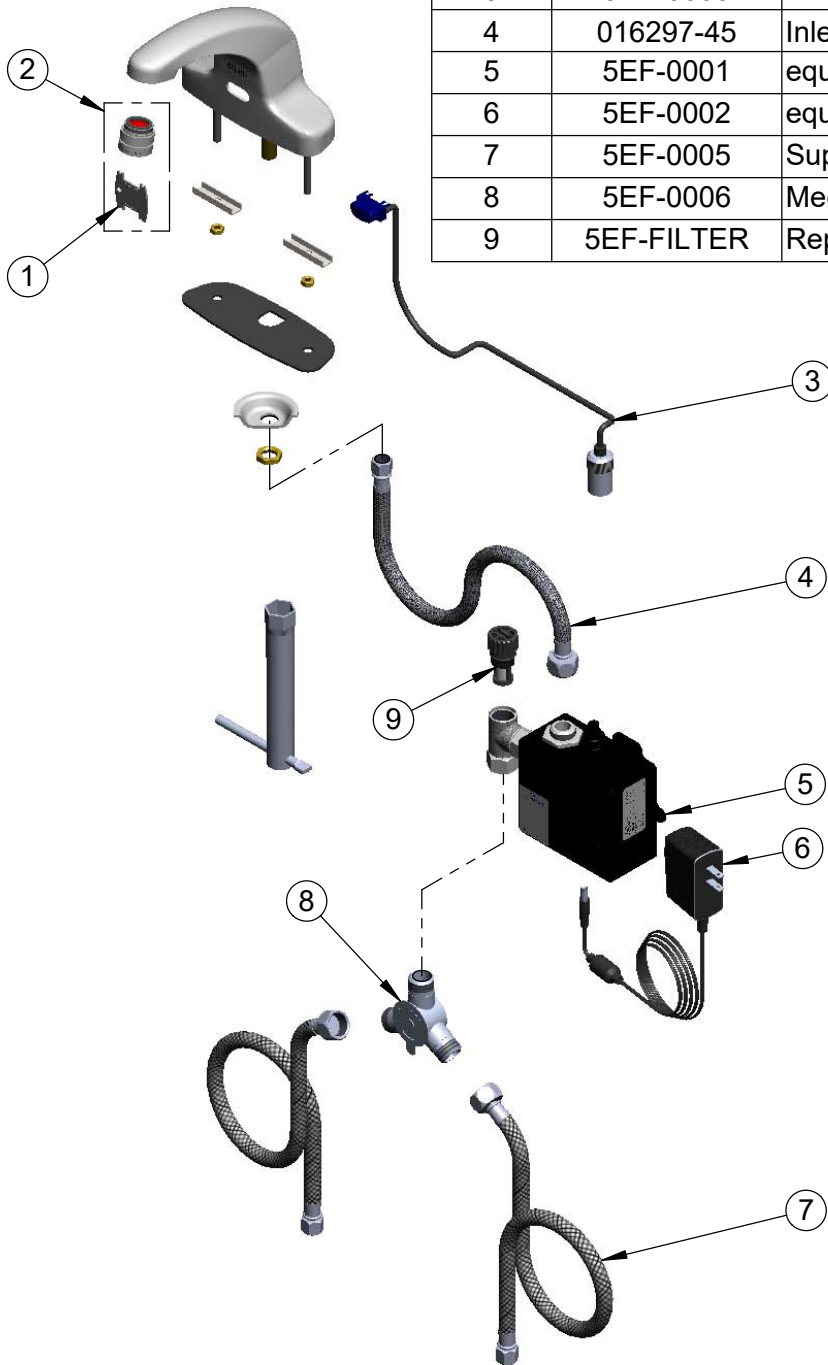
equip
Foodservice
Accessories



2 Saddleback Cove, P.O. Box 1088
Travelers Rest, South Carolina 29690
Phone: 800.891.4808 Fax: 800.868.0084
equip.tsbrass.com

Drawn: KJG Checked: MRC Approved: JHB Date: 10/10/19 Scale: 1:6 Sheet: 1 of 2

ITEM NO.	SALES NO.	DESCRIPTION
1	015425-45	Vandal Resistant Key
2	B-0199-09-WS	VR 1.5 GPM Aerator, 15/16-27 UN Male w/ Key
3	5EF-0003	24" Sensor Cable
4	016297-45	Inlet Hose, Faucet, 1/2" NPSM-F x 1/4" NPSM-F
5	5EF-0001	equip Sensor Faucet - Control Module
6	5EF-0002	equip AC Transformer, 100-240 VAC
7	5EF-0005	Supply Hose, 9/16-24 Female x 1/2" NPSM
8	5EF-0006	Mechanical Mixing Valve
9	5EF-FILTER	Replacement Filter



Model Number

5EF-2D-DS-WS

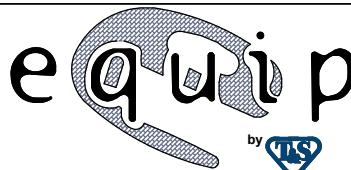
Product Specifications:

Electronic Faucet: 4" Deck Mount Cast Spout Faucet, VR 1.5 GPM Aerator, AC-DC Control Module, Temperature Control Mixing Valve, Integral Check Valves & (2) 18" Flexible Supply Hoses

Product Compliance:

ASME A112.18.1 / CSA B125.1
NSF 61 - Section 9
NSF 372 (Low Lead Content)
ANSI A117.1 (ADA)
EPA WaterSense
UL 1951

equip
Foodservice
Accessories



2 Saddleback Cove, P.O. Box 1088
Travelers Rest, South Carolina 29690
Phone: 800.891.4808 Fax: 800.868.0084
equip.tsbrass.com

Drawn: KJG Checked: MRC Approved: JHB Date: 10/10/19 Scale: NTS Sheet: 2 of 2