

This Space for Architect/Engineer Approval

Job Name _____ Date _____

Model Specified _____ Quantity _____

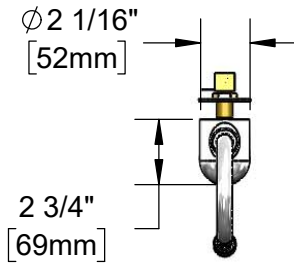
Customer/Wholesaler _____

Contractor _____

Architect/Engineer _____



ADA Compliant

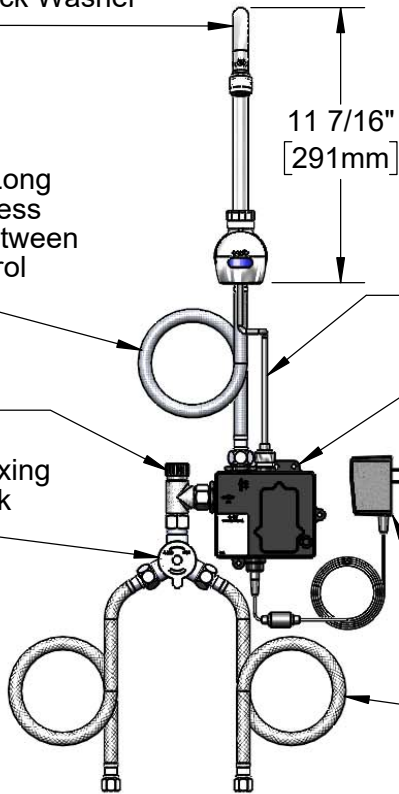


Swivel Gooseneck w/
2.2 GPM [8.3 LPM] Aerator.
Rigid Conversion Requires
017421-45 Lock Washer
(Included)

30" [762mm] Long
Flexible Stainless
Steel Hose Between
Shank & Control
Module

Removable
Strainer

Mechanical Mixing
Valve w/ Check
Valves

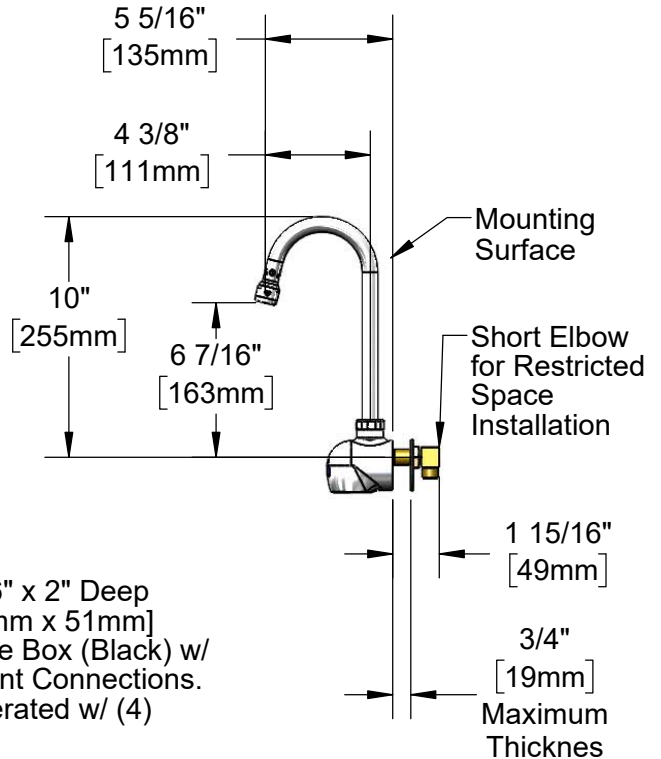


24" [610mm]
Sensor Cable

3 5/8" x 4 3/16" x 2" Deep
[92mm x 106mm x 51mm]
Control Module Box (Black) w/
Water Resistant Connections.
AC or DC Operated w/ (4)
AA Batteries

100-240 VAC Adapter
w/ 71" [1800mm] Power
Cord

(2) 18" [457mm] Flexible
Stainless Steel Supply Hoses.
1/2" NPSM Female x 3/8"
Compression Female



Mounting
Surface

Short Elbow
for Restricted
Space
Installation

Rough-In Requirement:
Ø 1 1/8" [29mm] Mounting Hole

Model Number

5EF-1D-WGMM

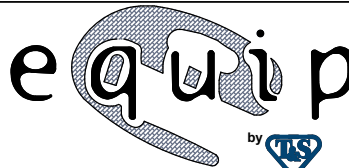
Product Compliance:

ASME A112.18.1 / CSA B125.1
NSF 61 - Section 9
NSF 372 (Low Lead Content)
ANSI A117.1 (ADA)
UL 1951

Product Specifications:

Electronic Faucet: Wall Mount Swivel Gooseneck, 2.2 GPM Aerator,
AC-DC Control Module, Temperature Control Mixing Valve,
Check Valves & (2) 18" Flexible Supply Hoses

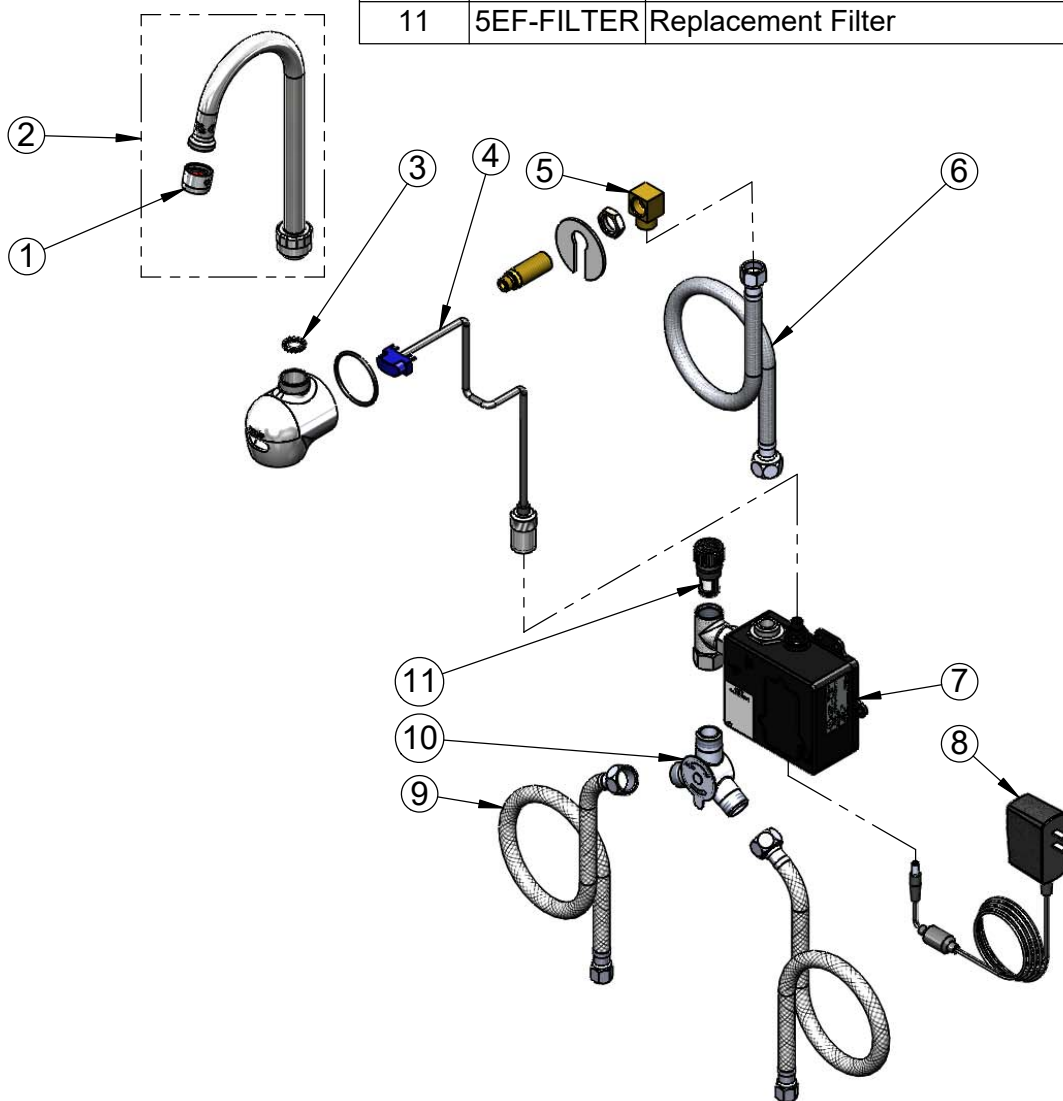
equip
Foodservice
Accessories



2 Saddleback Cove, P.O. Box 1088
Travelers Rest, South Carolina 29690
Phone: 800.891.4808 Fax: 800.868.0084
equip.tsbrass.com

Drawn: KJG Checked: JRM Approved: JHB Date: 09/10/18 Scale: 1:8 Sheet: 1 of 2

ITEM NO.	SALES NO.	DESCRIPTION
1	B-0199-01	2.2 GPM Aerator, 55/64-27 UN Female
2	015859-40	Swivel Gooseneck w/ 2.2 GPM Aerator (5EF-1D-WGMM)
3	017421-45	Serrated Lock Washer
4	5EF-0003	24" Sensor Cable
5	015345-20	3/8-18 NPSM Low Profile Elbow
6	016325-45	Inlet Hose, Faucet, 1/2" NPSM-F x 3/8" NPSM-F
7	5EF-0001	equip Sensor Faucet - Control Module
8	5EF-0002	equip AC Transformer, 100-240 VAC
9	5EF-0005	Supply Hose, 3/8" Compression x 1/2" NPSM
10	5EF-0006	Mechanical Mixing Valve
11	5EF-FILTER	Replacement Filter



Model Number

5EF-1D-WGMM

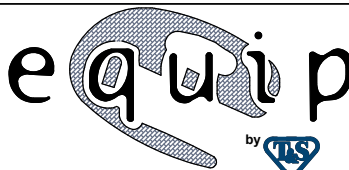
Product Compliance:

ASME A112.18.1 / CSA B125.1
NSF 61 - Section 9
NSF 372 (Low Lead Content)
ANSI A117.1 (ADA)
UL 1951

Product Specifications:

Electronic Faucet: Wall Mount Swivel Gooseneck, 2.2 GPM Aerator, AC-DC Control Module, Temperature Control Mixing Valve, Check Valves & (2) 18" Flexible Supply Hoses

equip
Foodservice
Accessories



2 Saddleback Cove, P.O. Box 1088
Travelers Rest, South Carolina 29690
Phone: 800.891.4808 Fax: 800.868.0084
equip.tsbrass.com