



Profit from the Eagle Advantage®

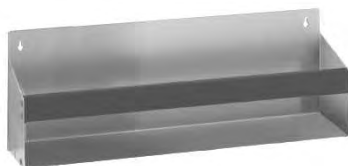
Specification Sheet

Short Form Specifications

Eagle Spec-Bar® Removable Single Speed Rail, model _____. Heavy gauge type 304 stainless steel construction with ABS for sound deadening. Available in keyhole style or hanging style.



hanging speed rail



keyhole speed rail

| | |
|--------------|-------|
| Item No.: | _____ |
| Project No.: | _____ |
| S.I.S. No.: | _____ |

Spec-Bar® Removable Single Speed Rails

MODELS:

- | | |
|--|--|
| <input type="checkbox"/> KSR-12 | <input type="checkbox"/> HSR-12 |
| <input type="checkbox"/> KSR-18 | <input type="checkbox"/> HSR-18 |
| <input type="checkbox"/> KSR-24 | <input type="checkbox"/> HSR-24 |
| <input type="checkbox"/> KSR-30 | <input type="checkbox"/> HSR-30 |
| <input type="checkbox"/> KSR-36 | <input type="checkbox"/> HSR-36 |

Design and Construction Features

- Type 304 stainless steel construction for strength and corrosion resistance.
- Bottom and front are 20 gauge stainless steel.
- Sides are 14 gauge stainless steel.
- Designed with ABS sound deadening covers to soften sound.
- Add to existing Spec-Bar® speed rails and vertical surfaces with two types of speed rails available.
- Increase brand recognition by storing bottles in these easy-to-clean speed rails.

EAGLE GROUP

100 Industrial Boulevard, Clayton, DE 19938-8903 USA

Phone: 302-653-3000 • Fax: 302-653-2065

www.eaglegrp.com

Foodservice Division: Phone 800-441-8440

MHC/Retail Display Divisions: Phone 800-637-5100

For custom configuration or fabrication needs, contact our **SpecFAB®** Division.

Phone: 302-653-3000 • Fax: 302-653-3091 • e-mail: specfab@eaglegrp.com

Certifications / Approvals



AUTOQUOTES



EG40.51 Rev. 04/11

Spec sheets available for viewing, printing or downloading from our online literature library at www.eaglegrp.com

Eagle Foodservice Equipment, Eagle MHC, SpecFAB®, and Retail Display are divisions of Eagle Group. ©2011 by the Eagle Group

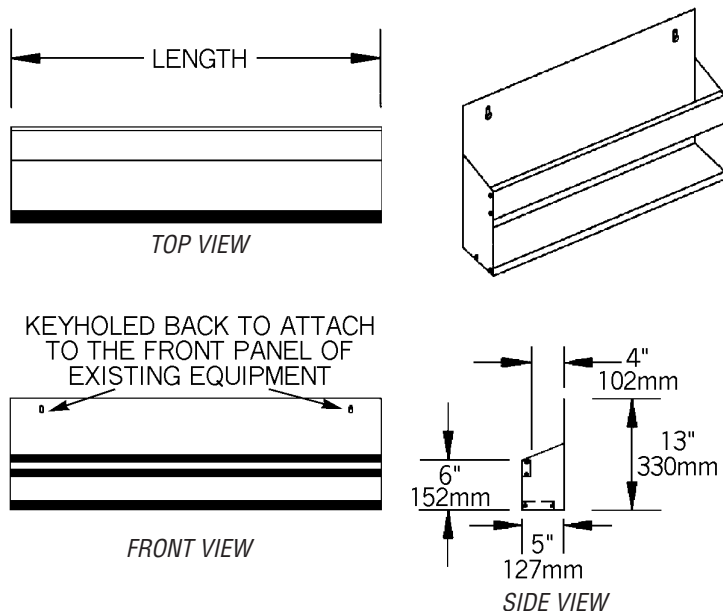


Profit from the Eagle Advantage®

Item No.: _____
Project No.: _____
S.I.S. No.: _____

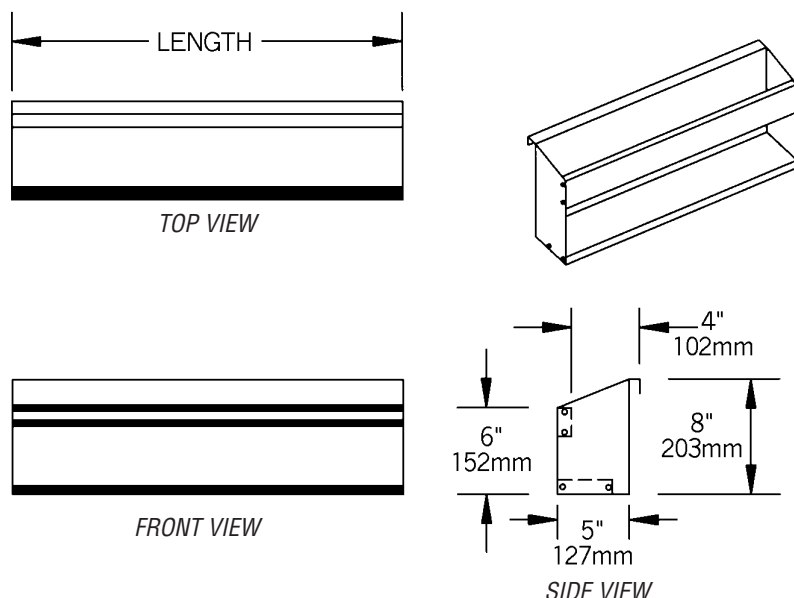
Spec-Bar® Removable Single Speed Rails

Keyhole Speed Rails – for attaching onto existing equipment



| model # | width | | length | | weight | |
|---------------|-------|-----|--------|-----|--------|-----|
| | in. | mm | in. | mm | lbs. | kg |
| KSR-12 | 5" | 127 | 12" | 305 | 4 | 1.8 |
| KSR-18 | 5" | 127 | 18" | 457 | 6 | 2.7 |
| KSR-24 | 5" | 127 | 24" | 610 | 7 | 3.2 |
| KSR-30 | 5" | 127 | 30" | 762 | 10 | 3.5 |
| KSR-36 | 5" | 127 | 36" | 914 | 12 | 5.4 |

Hanging Speed Rails – for clipping onto existing single speedrails



| model # | width | | length | | weight | |
|---------------|-------|-----|--------|-----|--------|-----|
| | in. | mm | in. | mm | lbs. | kg |
| HSR-12 | 5" | 127 | 12" | 305 | 4 | 1.8 |
| HSR-18 | 5" | 127 | 18" | 457 | 6 | 2.7 |
| HSR-24 | 5" | 127 | 24" | 610 | 7 | 3.2 |
| HSR-30 | 5" | 127 | 30" | 762 | 10 | 3.5 |
| HSR-36 | 5" | 127 | 36" | 914 | 12 | 5.4 |

EAGLE GROUP

100 Industrial Boulevard, Clayton, DE 19938-8903 USA

Phone: 302-653-3000 • Fax: 302-653-2065

www.eaglegrp.com

Foodservice Division: Phone 800-441-8440

MHC/Retail Division: Phone 800-637-5100

Printed in U.S.A.
©2011 by Eagle Group

Rev. 04/11

Spec sheets available for viewing, printing or downloading from our online literature library at www.eaglegrp.com

Although every attempt has been made to ensure the accuracy of the information provided, we cannot be held responsible for typographical or printing errors. Information and specifications are subject to change without notice. Please confirm at time of order.