



Profit from the Eagle Advantage®

Specification Sheet

Short Form Specifications

Eagle Battery-Powered Electronic-Eye Hand Sink, model _____ . Constructed of all-welded type 304 stainless steel, with deep-drawn positive drain sink bowl, inverted "V" edge to prevent spillage, drain, and splash mounted battery-powered electronic-eye faucet, with low battery indicator light. Offered are the following hand sinks:

- Model #HSA-10-FE-B-DS. Includes deck mounted soap dispenser.
- Model #HSAN-10-FE-B-DS. 12" side-to-side. Includes deck mounted soap dispenser.
- Model #HSA-10-FDPEE-B-T. Includes waste receptacle, stainless steel skirt, paper towel dispenser, and electronic soap dispenser.
- Model #HSAP-14-ADA-FE-B. ADA-approved, with fabricated sink bowl, front loading C-fold paper towel dispenser, deck mounted soap dispenser, and stainless steel skirt.
- Model #HSA-10-FE-B-NB-MG. Features MICROGARD® antimicrobial protected surface, and splash mounted nail brush holder.
- Model #HSA-10-FE-B-T-NB-MG. Features MICROGARD® antimicrobial protected surface, splash mounted nail brush holder, and stainless steel waste receptacle.



HSA-10-FE-B-DS

EAGLE GROUP

100 Industrial Boulevard, Clayton, DE 19938-8903 USA

Phone: 302-653-3000 • Fax: 302-653-2065

www.eaglegrp.com

Foodservice Division: Phone 800-441-8440

MHC/Retail Display Divisions: Phone 800-637-5100

For custom configuration or fabrication needs, contact our **SpecFAB®** Division.

Phone: 302-653-3000 • Fax: 302-653-3091 • e-mail: specfab@eaglegrp.com

Item No.: _____
Project No.: _____
S.I.S. No.: _____

Electronic Hand Sinks with Battery-Powered Faucet

MODELS:

- ☐ HSA-10-FE-B-DS
- ☐ HSA-10-FDPEE-B-T
- ☐ HSA-10-FE-B-NB-MG
- ☐ HSA-10-FE-B-T-NB-MG
- ☐ HSAN-10-FE-B-DS
- ☐ HSAP-14-ADA-FE-B

- Heavy gauge type 304 stainless steel all-welded construction.
- Unique deep-drawn positive-drain bowl assures complete drainage to meet the most stringent health code requirements.
- Inverted "V" edge rim retards spillage.
- Electronic-eye faucet conserves water and minimizes contamination.
- 6-volt battery has life span of 1-3 years depending upon usage.
- Built-in "low battery" indicator light.
- Water flow is controlled by low-voltage solenoid valve that activates when electronic eyes' sensor beam is broken.
- No electrical outlet required.
- Available wall mount and pedestal models.
- NSF approved to meet most stringent health code requirements.
- Most units have optional accessories as standard components.

Options / Accessories

- | | |
|--------------------------------------------------------------|-----------------------------------------------------|
| <input type="checkbox"/> Temperature adjustment valve | <input type="checkbox"/> Side splash |
| <input type="checkbox"/> P-trap | <input type="checkbox"/> Anti-scald valve |
| <input type="checkbox"/> Tail piece | <input type="checkbox"/> Skirt assembly |
| <input type="checkbox"/> Electronic-eye soap/towel dispenser | <input type="checkbox"/> Wall brackets |
| <input type="checkbox"/> Waste receptacle | <input type="checkbox"/> T&S battery-powered faucet |

Certifications / Approvals



Spec sheets available for viewing, printing or downloading from our online literature library at www.eaglegrp.com

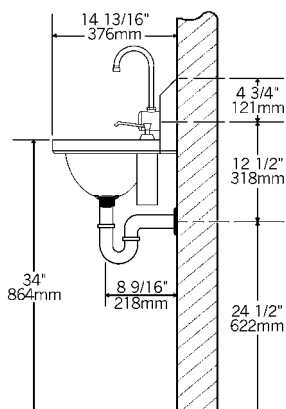
Eagle Foodservice Equipment, Eagle MHC, SpecFAB®, and Retail Display are divisions of Eagle Group. ©2009 by the Eagle Group



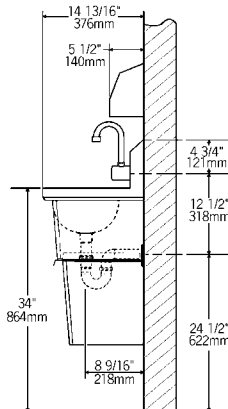
Profit from the Eagle Advantage®

Item No.: _____
Project No.: _____
S.I.S. No.: _____

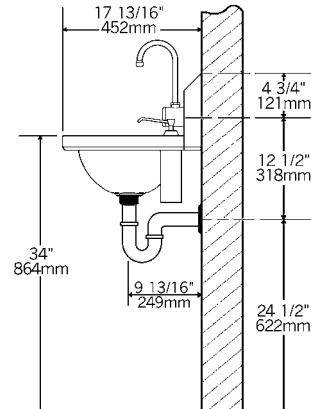
HSA-10-FE-B-DS



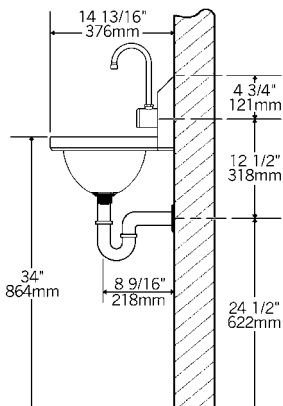
HSA-10-FDPEE-B-T



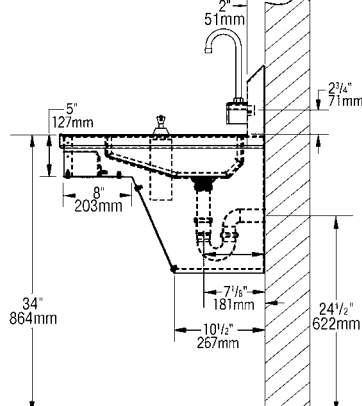
HSAN-10-FE-B-DS



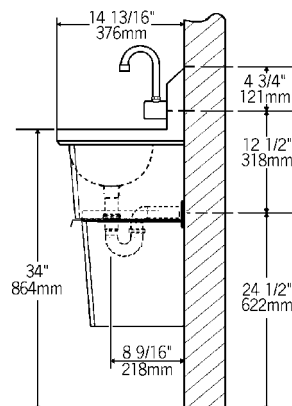
HSA-10-FE-B-NB-MG



HSAP-14-ADA-FE-B



HSA-10-FE-B-T-NB-MG



model #	includes	bowl size width x length x depth in. mm	overall size width x length x height in. mm	weight lbs. kg
HSA-10-FDPEE-B-T	faucet, towel disp., elec. soap disp., waste receptacle/skirt, basket drain	9 $\frac{3}{4}$ " x 13 $\frac{1}{2}$ " x 6 $\frac{3}{4}$ " 248 x 343 x 173	14 $\frac{3}{4}$ " x 19 $\frac{1}{4}$ " x 47 $\frac{1}{2}$ " 375 x 489 x 1207	46 20.9
HSA-10-FE-B-DS*	faucet, deck-mount soap disp., basket drain	9 $\frac{3}{4}$ " x 13 $\frac{1}{2}$ " x 6 $\frac{3}{4}$ " 248 x 343 x 173	14 $\frac{3}{4}$ " x 18 $\frac{7}{8}$ " x 12 $\frac{3}{4}$ " 375 x 480 x 324	12 5.2
HSAN-10-FE-B-DS*	faucet, deck-mount soap disp., basket drain	13 $\frac{1}{2}$ " x 9 $\frac{3}{4}$ " x 6 $\frac{3}{4}$ " 343 x 248 x 173	17 $\frac{13}{16}$ " x 12 $\frac{1}{8}$ " x 14 $\frac{1}{4}$ " 452 x 308 x 362	12 5.2
HSAP-14-ADA-FE-B	faucet, c-fold towel disp. in front, deck-mount soap disp., skirt, basket drain	16" x 14" x 5" 406 x 356 x 127	24" x 22" x 24 $\frac{1}{2}$ " 610 x 559 x 623	15 6.6
HSA-10-FE-B-NB-MG**	faucet, splash-mount nail brush holder, nail brush, basket drain	9 $\frac{3}{4}$ " x 13 $\frac{1}{2}$ " x 6 $\frac{3}{4}$ " 248 x 343 x 173	14 $\frac{13}{16}$ " x 18 $\frac{7}{8}$ " x 12 $\frac{3}{4}$ " 376 x 480 x 324	12 5.2
HSA-10-FE-B-T-NB-MG**	faucet, splash-mount nail brush holder, nail brush, waste receptacle, basket drain	9 $\frac{3}{4}$ " x 13 $\frac{1}{2}$ " x 6 $\frac{3}{4}$ " 248 x 343 x 173	14 $\frac{13}{16}$ " x 18 $\frac{7}{8}$ " x 29 $\frac{1}{8}$ " 376 x 480 x 740	29 13.1

*Overall height does not include soap dispenser globe; **Includes MICROGARD® antimicrobial protection

EAGLE GROUP

100 Industrial Boulevard, Clayton, DE 19938-8903 USA

Phone: 302-653-3000 • Fax: 302-653-2065

www.eaglegrp.com

Foodservice Division: Phone 800-441-8440

MHC/Retail Display Divisions: Phone 800-637-5100

Spec sheets available for viewing, printing or downloading from our online literature library at www.eaglegrp.com

Although every attempt has been made to ensure the accuracy of the information provided, we cannot be held responsible for typographical or printing errors. Information and specifications are subject to change without notice. Please confirm at time of order.

Printed in U.S.A.
©2009 by Eagle Group

Rev. 06/09