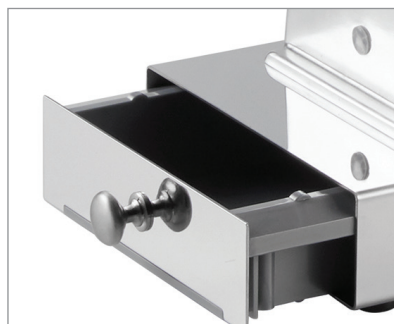




## #32 Electric MEAT GRINDER

#554BSG32



### FEATURES

- #32 size hub makes weekly batch production a breeze
- Designed with a sturdy metal body with a solid construction and non-skid feet
- Features a convenient built-in storage drawer to hold grinder plates and knives
- Includes stainless steel  $\frac{3}{16}$ ",  $\frac{3}{8}$ " plates, stuffing plate, 3 stuffing tubes, and a tamper
- Ideal for occasional use with smaller restaurants, deli, and butcher shops

### SPECS



Dimensions	10 $\frac{7}{8}$ "W x 22 $\frac{7}{8}$ "D x 18 $\frac{3}{8}$ "H
Hertz	60
Voltage	120
Wattage	1500
Capacity	16-18 lb. per minute
Hub Size	#32
HP	2