

MODEL 5400 BARRIER-FREE PEDESTAL DRINKING FOUNTAINS

Designed to comply with ADA requirements and withstand the roughest conditions. The Model 5400 Drinking Fountains are available as a stand-alone pedestal or as a wall mounted fountain.

-FP are frost proof models. It is recommended that a dual check valve backflow prevention be installed in the waterline going to any FP fountain

-FPS are sanifrost models which will not allow stored water to re-enter the bubbler.

FEATURES

- Column is fabricated from one piece steel pipe and all exposed parts are recessed in welded steel plates
- Mounting plate and stainless steel bottom plate come standard
- Access plates are vandal resistant and provide easy maintenance
- Push button chrome plated brass valve recessed in 3/8" steel plate
- Steel bubbler guard(s) and chrome plated brass bubbler
- Adjustable flow regulation
- Heavy 3/8" sheet steel arm
- 18 gauge brush finished stainless steel receptor with a vandal resistant chrome plated brass drain plug
- Stainless steel supply fittings connected to reinforced tubing
- Woodland green powder coat finish with optional colors and stainless steel (-SS) available
- In-line mesh screen strainer
- 10-3/4" diameter steel pipe(s) with 3/16" wall thickness
- Delivers 8.0 GPH of chilled water refreshment
- Supply complete with 1/2" IPS lock shield screwdriver stop
- 1-1/4" IPS waste pipes included with every fountain



ORDERING OPTIONS

Part Number

5400-



Optional

- ☐ **SS:** Stainless steel finish
- ☐ **31:** Chrome Plated Jug Filler
- ☐ **32:** RCP Hose bibb with VB
- ☐ **32-LK:** RCP Hose bibb with VB and Key
- ☐ **32-SC:** Self Closing Hose bibb with VB
- ☐ **34:** Frost Proof Jug Filler
- ☐ **35-VP:** Recessed hose bibb with lock
- ☐ **36:** Push Button Jug Filler
- ☐ **37:** Foot Spray
- ☐ **38:** Shutdown/Drain Valve
- ☐ **40:** Commemorative Plaque
- ☐ **84:** Water Filter
- ☐ **85:** Valve Box
- ☐ **87:** Metal Valve Box
- ☐ **90:** Pet fountain
 - 90-SS:** Stainless steel pet fountain
- 95:** Sand Trap
- 96:** Sand Strainer Plate
- SMP-10:** Surface Mounting Plate

5400-FP-



Optional

- ☐ **SS:** Stainless steel finish
- ☐ **31:** Chrome Plated Jug Filler
- ☐ **32:** RCP Hose bibb with VB
- ☐ **32-LK:** RCP Hose bibb with VB and Key
- ☐ **32-SC:** Self Closing Hose bibb with VB
- ☐ **34:** Frost Proof Jug Filler
- ☐ **35-VP:** Recessed hose bibb with lock
- ☐ **36:** Push Button Jug Filler
- ☐ **37:** Foot Spray
- ☐ **38:** Shutdown/Drain Valve
- ☐ **40:** Commemorative Plaque
- ☐ **84:** Water Filter
- ☐ **85:** Valve Box
- ☐ **87:** Metal Valve Box
- ☐ **90:** Pet fountain
 - 90-SS:** Stainless steel pet fountain
- 95:** Sand Trap
- 96:** Sand Strainer Plate
- SMP-10:** Surface Mounting Plate

5400-FPS-



Optional

- ☐ **SS:** Stainless steel finish
- ☐ **31:** Chrome Plated Jug Filler
- ☐ **32:** RCP Hose bibb with VB
- ☐ **32-LK:** RCP Hose bibb with VB and Key
- ☐ **32-SC:** Self Closing Hose bibb with VB
- ☐ **34-FPS:** Sanifrost Jug Filler
- ☐ **35-VP:** Recessed hose bibb with lock
- ☐ **36:** Push Button Jug Filler
- ☐ **37:** Foot Spray
- ☐ **38:** Shutdown/Drain Valve
- ☐ **40:** Commemorative Plaque
- ☐ **84:** Water Filter
- ☐ **85:** Valve Box
- ☐ **87:** Metal Valve Box
- ☐ **90:** Pet fountain
 - 90-SS:** Stainless steel pet fountain
- ☐ **95:** Sand Trap
- 96:** Sand Strainer Plate
- SMP-10:** Surface Mounting Plate

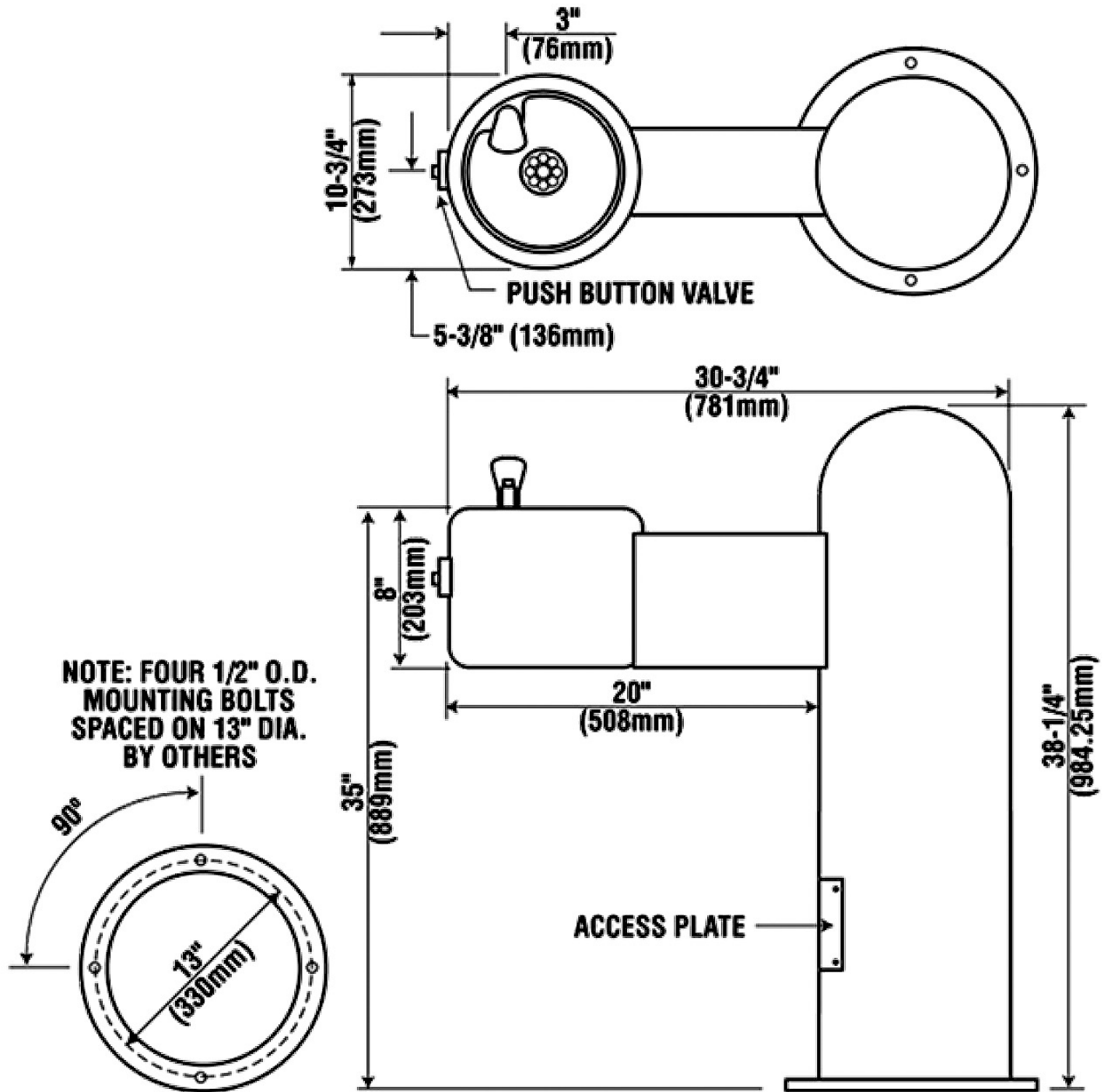
*A maximum of 3 options may be added to a fountain.

*Part number 5400-MWL or 5400-MWL-FP for a wall-mounted model.

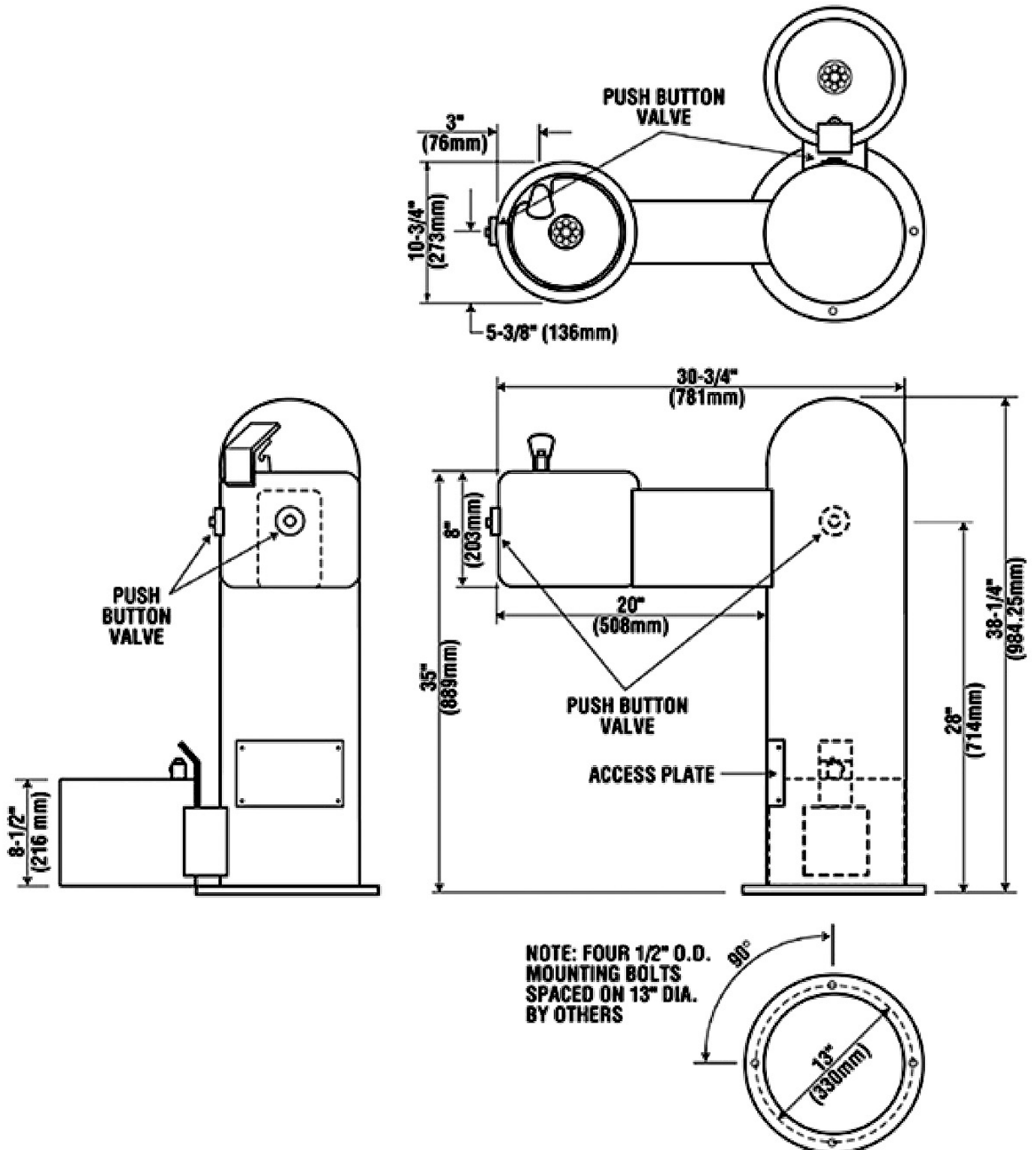
DIMENSIONS

All dimensions subject to manufacturing variance of plus or minus 1/4" (6 mm)

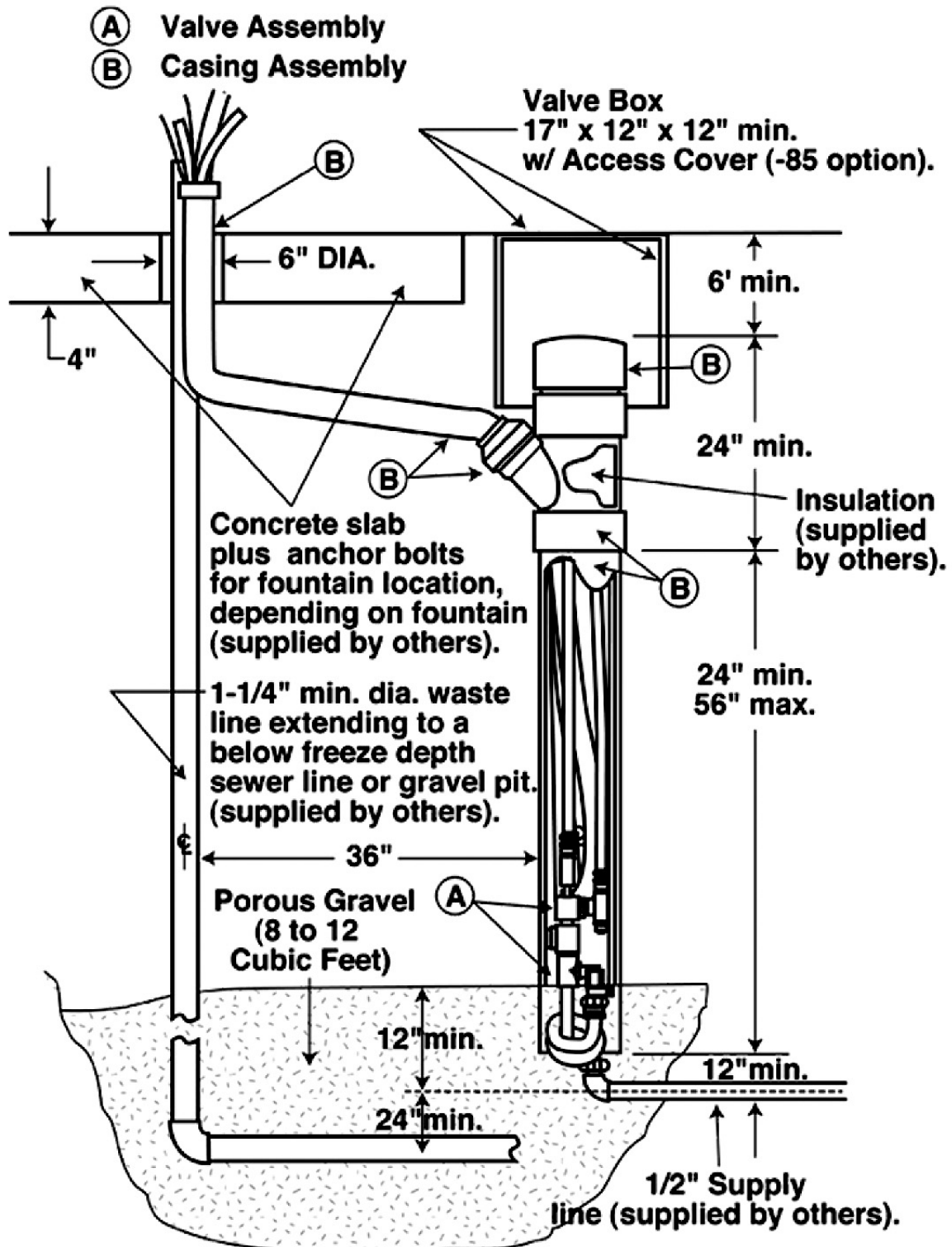
5400 38-1/4"H x 10-3/4"W x 30-3/4"L / Single with surface mount
5400-MWL 38-1/4"H x 10-3/4" W x 25-3/8 L / Surface and Wall mounted



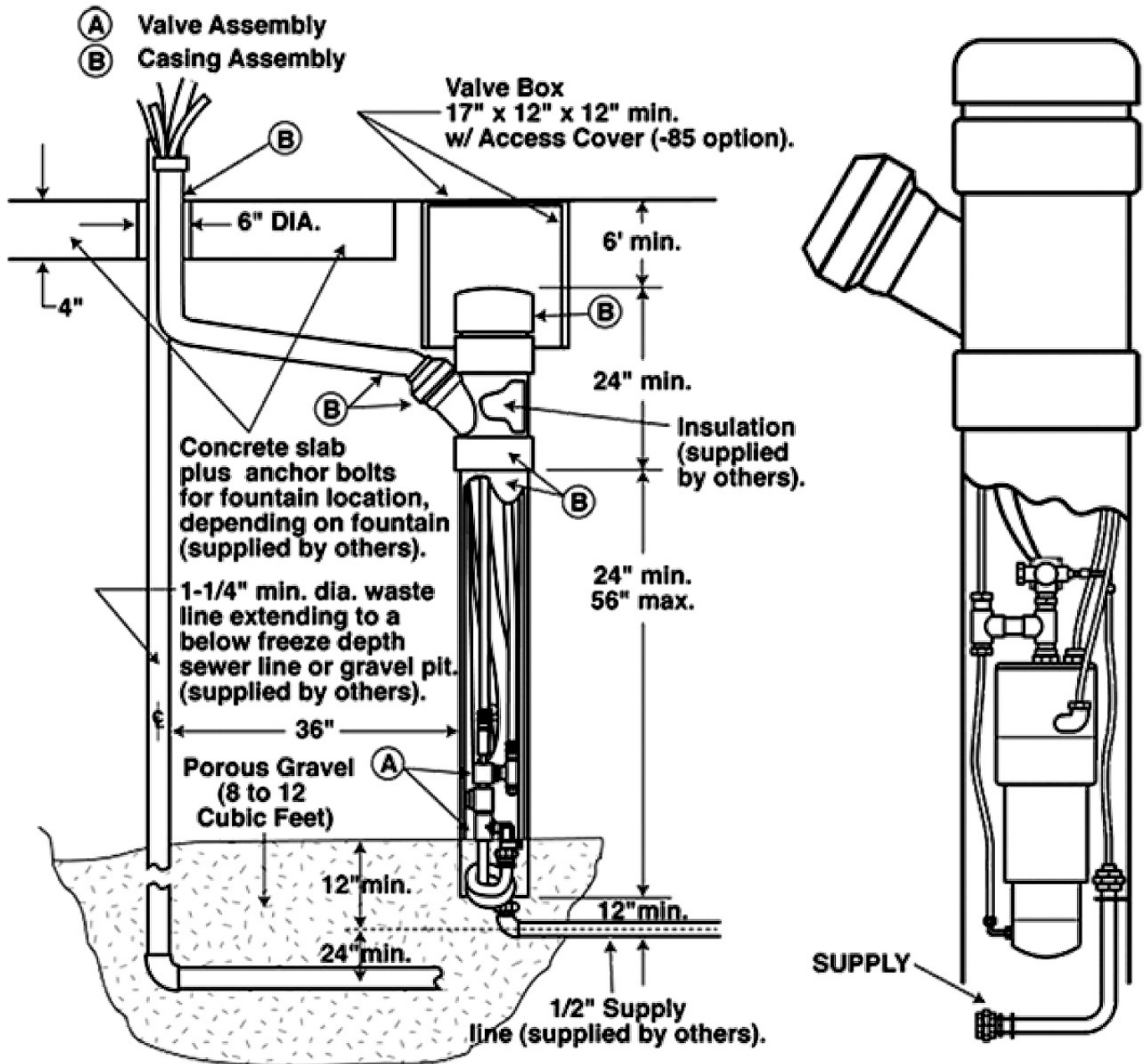
5400-90



5400-FP



5400-FPS



5400-MWL

