



## L3GP: ITEM PROFILE

### 6.5 INCH CAST IRON GRILL PAN



	weight	length	width	height	cubic feet	UPC	
<b>L3GP   6.5 Inch Cast Iron Grill Pan</b>							
each	2.24 LB	10.18 L	6.68 W	1.63 H	0.054 FT <sup>3</sup>	075536-33509-4	
case	13.79 LB	10.25 L	6.63 W	4.25 H	0.167 FT <sup>3</sup>	6-00-75536-33509-6	6 PACK
HTS	7323.91.0000			Hi/Ti	6/25	4.63 BASE	6.13 RIM 1.37 HEIGHT

## DESCRIPTION

### QUICK DESCRIPTION

6.5 Inch Seasoned Cast Iron Grill Pan

### DETAILED DESCRIPTION

The Lodge 6.5 inch grill pan is a great option for small meals or side dishes. The ribs of the pan allow fat to drain from food while also searing tantalizing grill marks onto meats, vegetables and paninis. It also makes a great serving piece.

### MADE IN THE USA



*click image for detailed item measurements*



### LODGE MANUFACTURING CO.

PO BOX 380  
SOUTH PITTSBURG,  
TENNESSEE 37380

423-837-7181  
INFO@LODGEFG.COM  
ORDERS@LODGEFG.COM

03/08/2018

## ITEM DETAILS

### FEATURES

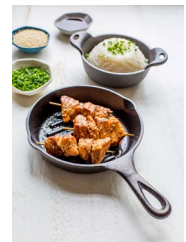
- Seasoned with oil for a natural, easy-release finish that improves with use
- Easy care: hand wash, dry, rub with cooking oil
- The right tool to sear, bake, broil, braise, fry or grill
- At home in the oven, on the stove, on the grill or over the campfire
- Great for induction cooktops
- Brutally tough for decades of cooking
- Unparalleled in heat retention and even heating

### NOTES:

Foundry seasoned cast iron. Full color flap label, in English, Spanish and French. Made in the USA Elasti-tag.

## AVAILABLE IMAGES

[Click here](#) for photos.



[Click the tab for more info](#)

[General Category](#)

[Use & Care](#)

[Lodge History](#)