

Product Specifications

Refrigerated Self-Service Under Counter Case

- ☐ CO33R-UC-E3
- ☐ CO43R-UC-E3
- ☐ CO53R-UC-E3
- ☐ CO63R-UC-E3

Lengths include end panels
36-1/4"L x 32-3/8"D x 32-3/4"H
47-1/4"L x 32-3/8"D x 32-3/4"H
59-1/4"L x 32-3/8"D x 32-3/4"H
71-1/4"L x 32-3/8"D x 32-3/4"H



MODEL SHOWN: CO43R-UC-E3

NOTE: SHOWN BEHIND CUSTOMER SUPPLIED COUNTER

Conforms to NSF STD 7
TYPE II

STANDARD FEATURES

- Breeze~E (Type-II) w/ EnergyWise s/c refrigeration (rear access)
- Casters (non-locking) w/ levelers
- Compressor air rear intake, front discharge at toe kick. Front and rear panels cannot be blocked. Must remain 4" from wall
- Condensate pan (self-contained refrigeration only)
- Flat front panel
- Integrated average product temperature of 40°F or less
- LED 3500K top light(s)
- One year parts & labor; 5 year compressor warranty
- Removable deck pans provide complete access to evaporator coil & refrigeration connections
- Toe kick, black

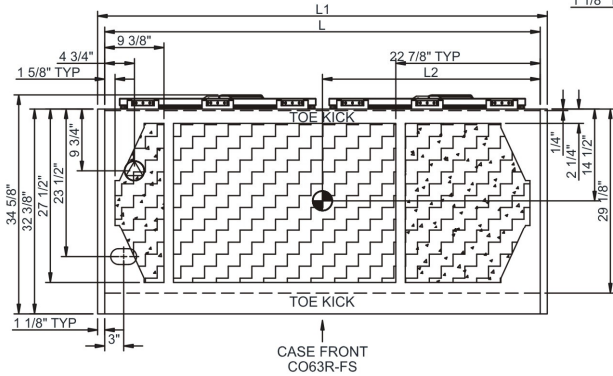
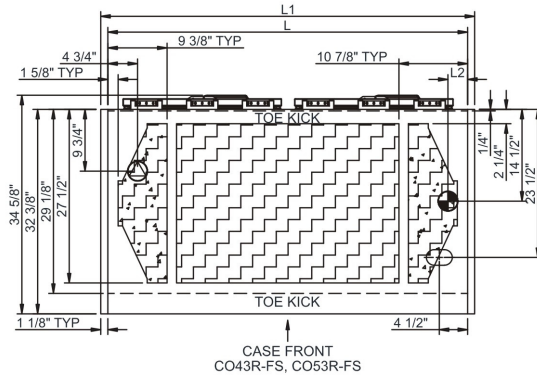
Features	Standard	Options
MODEL CONFIGURATION	<input type="checkbox"/> Undercounter height (-UC) Undercounter ht. 32-3/4"H; front panel extends over end panels to blend w/adj. counters (supplied by others). Counter surface (supplied by others) extends over top of unit	
EXTERIOR COLOR	<input type="checkbox"/> Black	
INTERIOR COLOR	<input type="checkbox"/> Black interior	
END PANEL LEFT	<input type="checkbox"/> Square full end panel w/mirror	
END PANEL RIGHT	<input type="checkbox"/> Square full end panel w/mirror	
EXTERIOR BACK PANEL	<input type="checkbox"/> Solid back panel, black	
ELECTRICAL CONNECT	<input type="checkbox"/> 6' straight blade power cord (self-cont.)	
REFRIGERATION	<input type="checkbox"/> Breeze~E (Type-II) w/ EnergyWise s/c refrigeration (rear access)	
MISCELLANEOUS		<input type="checkbox"/> Second year parts & labor warranty (excludes compressor)

Product Specifications

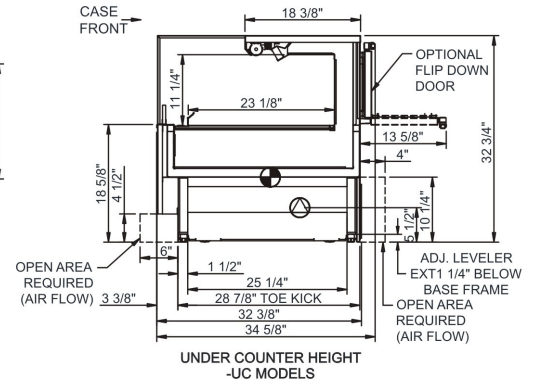
Intended Environment: Type II - Designed to operate in ambient conditions of 80°F and 60% relative humidity unless noted otherwise in system information below.

Zone	Intended Product To Be Displayed	Warmest Avg Prod Temp ° F
1	Packaged refrigerated products	40

PLAN VIEW



SIDE VIEW



NOTE: ALL DIMENSIONS APPROXIMATE

- ELECTRICAL JUNCTION BOX (SUPPLIED WITH 6\"/>

Model Technical Specifications																
Model	L"	L1"	L2"	System Circuit Volts			Phs	Freq	Amps ***	Watts	Wires	NEMA Plug	SST	Conv. Rack BTUH	Para. Rack BTUH	Est Wt
CO33R-UC-E3	N/A	36.25	3.13	Remote(Type I)	Circuit #1	110-120	1	60	1.12	36	2+G	Leads Multiple	20.00	1426	1320	650
				Remote(Type II)	Circuit #1	110-120	1	60	1.12	42	2+G	Leads Multiple	20.00	1706	1580	
				Self-Contained	Circuit #1	110-120	1	60	11.98	1,050	2+G	5-15P or L5-15P	N/A	N/A	N/A	
CO43R-UC-E3	N/A	47.25	3.13	Remote(Type I)	Circuit #1	110-120	1	60	1.14	40	2+G	Leads Multiple	20.00	1620	1500	700
				Remote(Type II)	Circuit #1	110-120	1	60	1.14	40	2+G	Leads Multiple	20.00	1922	1780	
				Self-Contained	Circuit #1	110-120	1	60	12.00	1,053	2+G	5-15P or L5-15P	N/A	N/A	N/A	
CO53R-UC-E3	N/A	59.25	3.13	Remote(Type I)	Circuit #1	110-120	1	60	1.22	52	2+G	Leads Multiple	20.00	2052	1900	750
				Remote(Type II)	Circuit #1	110-120	1	60	1.22	52	2+G	Leads Multiple	20.00	2419	2240	
				Self-Contained	Circuit #1	110-120	1	60	14.86	1,190	2+G	5-20P or L5-20P	N/A	N/A	N/A	
CO63R-UC-E3	N/A	71.25	34.50	Remote(Type I)	Circuit #1	110-120	1	60	1.56	75	2+G	Leads Multiple	20.00	2527	2340	850
				Remote(Type II)	Circuit #1	110-120	1	60	1.56	75	2+G	Leads Multiple	20.00	2981	2760	
				Self-Contained	Circuit #1	110-120	1	60	15.20	1,211	2+G	5-20P or L5-20P	N/A	N/A	N/A	

*** Does not include electric defrost on freezer models.

Regulatory Approvals:

All Models	<p>Accordance with AHRI Std 1200</p> <p>ETL Listed to UL 471</p> <p>ETL Listed to CAN/CSA 22.2 No. 120</p> <p>ETL Sanitation to NSF 7</p>
------------	---



In Accordance with
AHRI Std 1200

DOE 2017
Energy Efficiency
Compliant

Important Notes:

- 1) ELECTRICAL NOTE: If GFCI is required, a GFCI breaker MUST be used in lieu of a GFCI receptacle
- 2) 33" Minimum entry door clearance required (w/out shipping skid)
- 3) Performance issues (product temperatures, water on floor, etc.) caused by adverse conditions are not covered by warranty.
- 4) Keep unit at least 15' from exterior doors, overhead HVAC vents, or any air curtain disruption.
- 5) Do not expose unit to direct sunlight or any heat source (ovens, fryers, etc.).

⚠ WARNING: This product can expose you to chemicals, including Urethane (Ethyl Carbamate), which are known to the State of California to cause cancer and birth defects or other reproductive harm. For more information go to www.P65Warnings.ca.gov.