



# T&S BRASS AND BRONZE WORKS, INC.

2 Saddleback Cove / P.O. Box 1088  
Travelers Rest, SC 29690

Model No.

**S-0133-CR-BYS-TGH**

Item No.

Travelers Rest, SC: 800-476-4103 • Simi Valley, CA: 800-423-0150 • Fax: 864-834-3518 • www.tsbrass.com

This Space for Architect/Engineer Approval

Job Name \_\_\_\_\_ Date \_\_\_\_\_

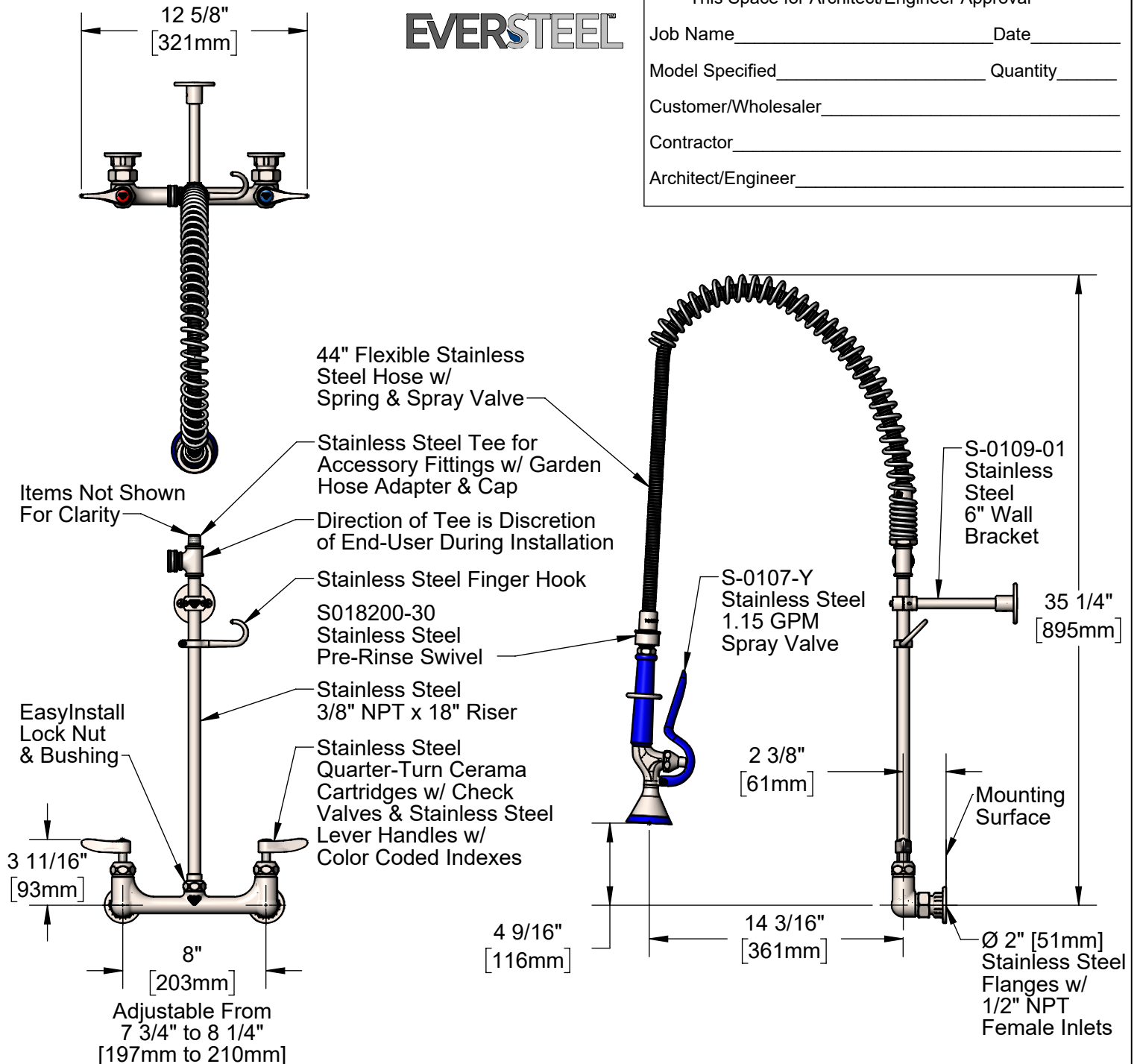
Model Specified \_\_\_\_\_ Quantity \_\_\_\_\_

Customer/Wholesaler \_\_\_\_\_

Contractor \_\_\_\_\_

Architect/Engineer \_\_\_\_\_

**EVERSTEEL**



**Product Specifications:**

Stainless Steel Pre-Rinse Unit: EasyInstall 8" Wall Mount Mixing Faucet, Quarter-Turn Cerama Cartridges w/ Check Valves, Lever Handles, 12" Swing Nozzle, 44" Flexible Stainless Steel Hose, Swivel, 1.15 GPM Spray Valve, Accessory Fitting w/ Garden Hose Adapter & Cap, 6" Wall Bracket & 1/2" NPT Female Inlets

**Product Compliance:**

ASME A112.18.1 / CSA B125.1  
NSF 61 - Section 9  
NSF 372 (Low Lead Content)  
2019 DOE PRSV - Class II



# T&S BRASS AND BRONZE WORKS, INC.

2 Saddleback Cove / P.O. Box 1088  
Travelers Rest, SC 29690

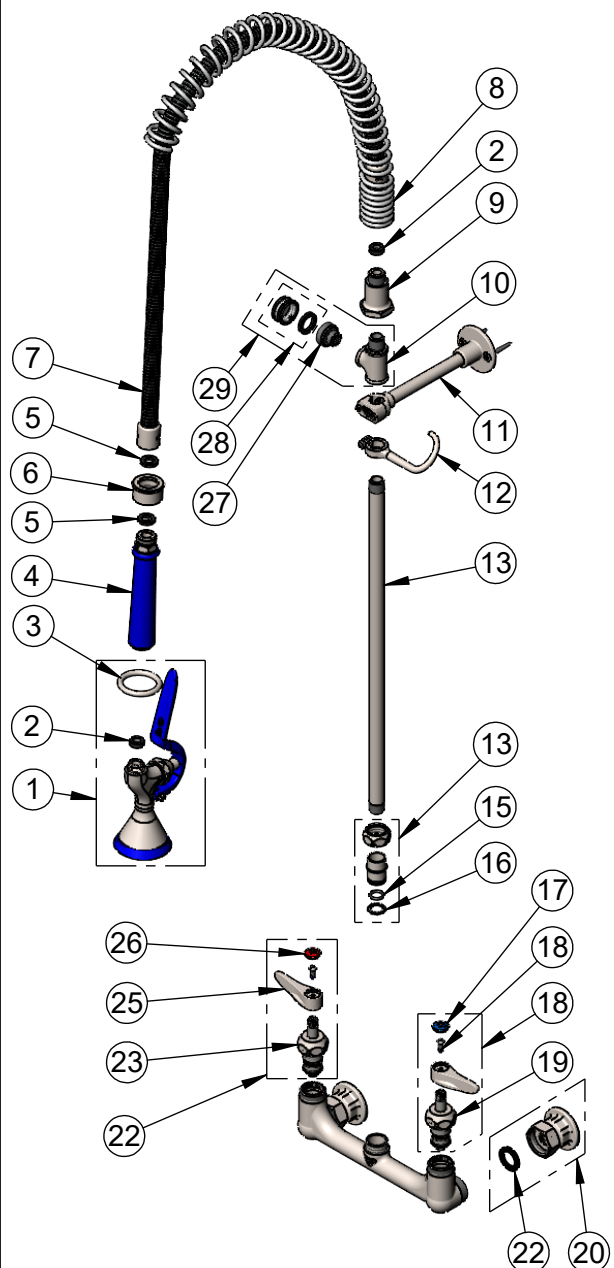
Model No.

**S-0133-CR-BYS-TGH**

Item No.

Travelers Rest, SC: 800-476-4103 • Simi Valley, CA: 800-423-0150 • Fax: 864-834-3518 • www.tsbrass.com

	ITEM NO.	SALES NO.	DESCRIPTION
	1	S-0107-Y	Stainless Steel 1.15 GPM Spray Valve (Blue)
	2	010476-45	#27 Washer
	3	S000907-30	Spray Valve Hold Down Ring
	4	S020795-30	S-0107 New Style Grip Handle, Blue
	5	001014-45	Washer, Hose Barrel
	6	S018200-30	Stainless Steel Pre-Rinse Swivel w/ 2 Washers
	7	S-0044-H2A	44" Flexible Stainless Steel Hose, Less Handle
	8	S000888-30	EasyInstall Overhead Spring
	9	S000821-30	Spring Body
	10	S-TEE-RGD	Stainless Steel Rigid Tee
	11	S-0109-01	6" Wall Bracket
	12	S004R	Finger Hook
	13	S000369-30	3/8" NPT x 18" Riser
	14	SEZ-K	Stainless Steel EasyInstall Kit: Nut, Bushing, O-Ring & Lock Washer
	15	001065-45	O-Ring
	16	014200-45	Star Washer, Anti-Rotation
	17	018506-19NS	Blue Button Index, Press-in
	18	000925-45	Lab Handle Screw
	19	S012447-30NS	Stainless Steel Quarter-Turn Cerama Cartridge w/ Check Valve, Handle, Blue Index & Screw, LTC
	20	S012395-30NS	Stainless Steel Quarter-Turn Cerama Cartridge w/ Check Valve, LTC
	21	S00AA	SS 1/2" NPT Female Eccentric Flange
	22	010569-45	Washer, Inlet Flange Coupling (UK)
	23	S012446-30NS	Stainless Steel Quarter-Turn Cerama Cartridge w/ Check Valve, Handle, Red Index & Screw, RTC
	24	S012394-30NS	Stainless Steel Quarter-Turn Cerama Cartridge w/ Check Valve, RTC
	25	S001638-30NS	Stainless Steel Lever Handle (New Style)
	26	001193-19NS	Red Button Index, Press-in
	27	S-GH	SS Garden Hose Adapter
	28	021204-45	Garden Hose Cap
	29	S-TEE-RGD-GH	Stainless Steel Rigid Tee w/ Garden Hose Adapter & Cap



**Product Specifications:**  
 Stainless Steel Pre-Rinse Unit: EasyInstall 8" Wall Mount Mixing Faucet, Quarter-Turn Cerama Cartridges w/ Check Valves, Lever Handles, 12" Swing Nozzle, 44" Flexible Stainless Steel Hose, Swivel, 1.15 GPM Spray Valve, Accessory Fitting w/ Garden Hose Adapter & Cap, 6" Wall Bracket & 1/2" NPT Female Inlets

**Product Compliance:**  
 ASME A112.18.1 / CSA B125.1  
 NSF 61 - Section 9  
 NSF 372 (Low Lead Content)  
 2019 DOE PRSV - Class II