**T&S BRASS AND BRONZE WORKS, INC.**2 Saddleback Cove / P.O. Box 1088  
Travelers Rest, SC 29690

Model No.

**HG-4 Series**

Item No.

Travelers Rest, SC: 800-476-4103 • Simi Valley, CA: 800-423-0150 • Fax: 864-834-3518 • www.tsbrass.com

This Space for Architect/Engineer Approval

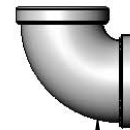
Job Name \_\_\_\_\_ Date \_\_\_\_\_

Model Specified \_\_\_\_\_ Quantity \_\_\_\_\_

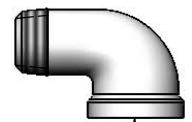
Customer/Wholesaler \_\_\_\_\_

Contractor \_\_\_\_\_

Architect/Engineer \_\_\_\_\_

**SAFE-T-LINK**Coated Gas Connector w/  
NPT Male Ends & (1)  
2-Piece Quick Disconnect

90° Elbow



Street El

"L" = Length	1/2" NPT
12"	HG-4C-12
24"	HG-4C-24
36"	HG-4C-36
48"	HG-4C-48
60"	HG-4C-60
72"	HG-4C-72

"L" = Length	3/4" NPT
12"	HG-4D-12
24"	HG-4D-24
36"	HG-4D-36
48"	HG-4D-48
60"	HG-4D-60
72"	HG-4D-72

"L" = Length	1" NPT
12"	HG-4E-12
24"	HG-4E-24
36"	HG-4E-36
48"	HG-4E-48
60"	HG-4E-60
72"	HG-4E-72

"L" = Length	1 1/4" NPT
12"	HG-4F-12
24"	HG-4F-24
36"	HG-4F-36
48"	HG-4F-48
60"	HG-4F-60
72"	HG-4F-72

**HG-4 Series Product Configurator: HG - 4**  - Ex: HG - 4  - Gas Hose, 3/4" NPT Male Ends, 36" Length, (1) 2-Piece  
Quick Disconnect, (1) Elbow, (1) Street El

## Product Specifications:

Safe-T-Link Gas Appliance Connector:  
Coated Hose w/ NPT Male Ends, 2-Piece Quick Disconnect,  
90° Elbow & Street El

Drawn:

DHL

Checked:

DMH

Approved:

JHB

Scale:

NTS

Date:

09/27/12