



# T&S BRASS AND BRONZE WORKS, INC.

2 Saddleback Cove / P.O. Box 1088  
Travelers Rest, SC 29690

Model No.

**EC-SMT**

Item No.

Travelers Rest, SC: 800-476-4103 • Simi Valley, CA: 800-423-0150 • Fax: 864-834-3518 • www.tsbrass.com

This Space for Architect/Engineer Approval

Job Name \_\_\_\_\_ Date \_\_\_\_\_

Model Specified \_\_\_\_\_ Quantity \_\_\_\_\_

Customer/Wholesaler \_\_\_\_\_

Contractor \_\_\_\_\_

Architect/Engineer \_\_\_\_\_

## Performance Rating

Minimum Flow Rate: 0.5 GPM

Pressure Drop at Minimum Flow Rate: 0.5 psi

Maximum Pressure: 125 psi

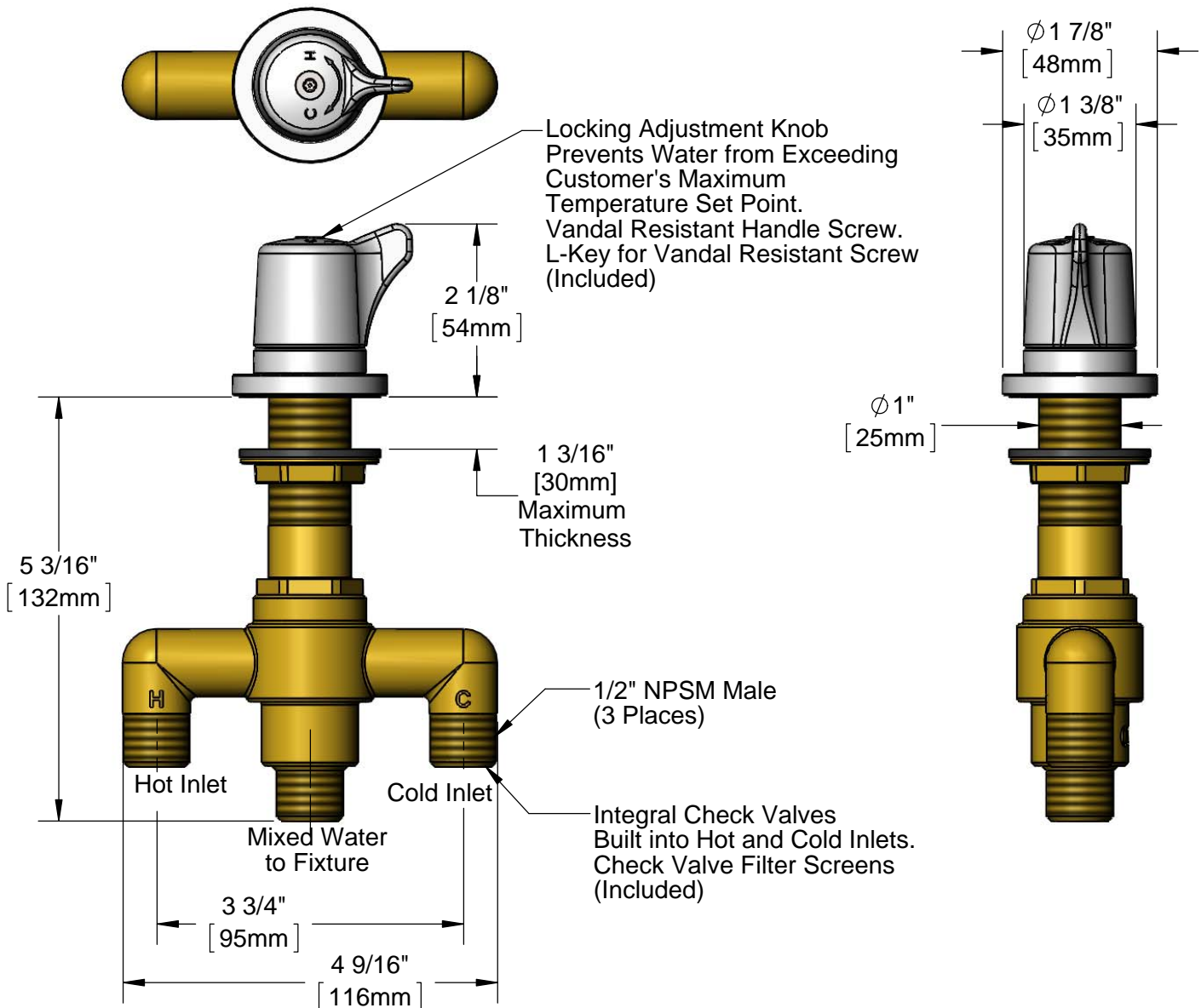
Hot Water Inlet Temperature Range: 120~180°F (49~82°C)

Outlet Temperature Range: 80~120°F (27~49°C)

Outlet Temperature Factory Setting: Approx. 100°F (38°C)



ADA Compliant



Rough-In Requirement:  
Ø 1 1/4" [32mm] Mounting Hole

Product Specifications:  
Above Deck Thermostatic Mixing Valve with 1/2" NPSM Male Fittings

Product Compliance:

ASME A112.18.1 / CSA B125.1  
NSF 61 - Section 9  
NSF 372 (Low Lead Content)  
ANSI A117.1 (ADA)  
ASSE 1070 (TMV)

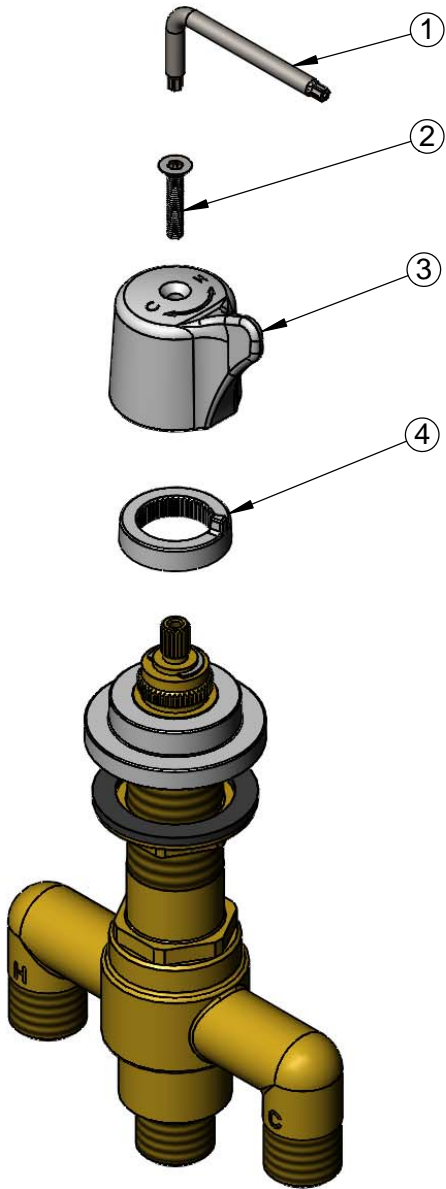


**T&S BRASS AND BRONZE WORKS, INC.**  
2 Saddleback Cove / P.O. Box 1088  
Travelers Rest, SC 29690

Model No.  
**EC-SMT**  
Item No.

Travelers Rest, SC: 800-476-4103 • Simi Valley, CA: 800-423-0150 • Fax: 864-834-3518 • www.tsbrass.com

ITEM NO.	SALES NO.	DESCRIPTION
1	018543-45	Torx T-20 VR L-Key
2	018541-45	M4 x 23mm, Stainless Steel, Torx VR FH Screw
3	018249-45	Above Deck TMV, Handle
4	018248-45	Temperature Limit Stop (TMV)



Product Specifications:  
Above Deck Thermostatic Mixing Valve with 1/2" NPSM Male Fittings

Product Compliance:  
ASME A112.18.1 / CSA B125.1  
NSF 61 - Section 9  
NSF 372 (Low Lead Content)  
ANSI A117.1 (ADA)  
ASSE 1070 (TMV)