



# T&S BRASS AND BRONZE WORKS, INC.

2 Saddleback Cove / P.O. Box 1088  
Travelers Rest, SC 29690



REG. #A2601  
ISO #9001

Model No.

EC-3102-TMV

Item No.

Travelers Rest, SC: 800-476-4103 Simi Valley, CA: 800-423-0150 Fax: 864-834-3518 www.tsbrass.com

This Space for Architect/Engineer Approval

Job Name \_\_\_\_\_ Date \_\_\_\_\_

Model Specified \_\_\_\_\_ Quantity \_\_\_\_\_

Customer/Wholesaler \_\_\_\_\_

Contractor \_\_\_\_\_

Architect/Engineer \_\_\_\_\_

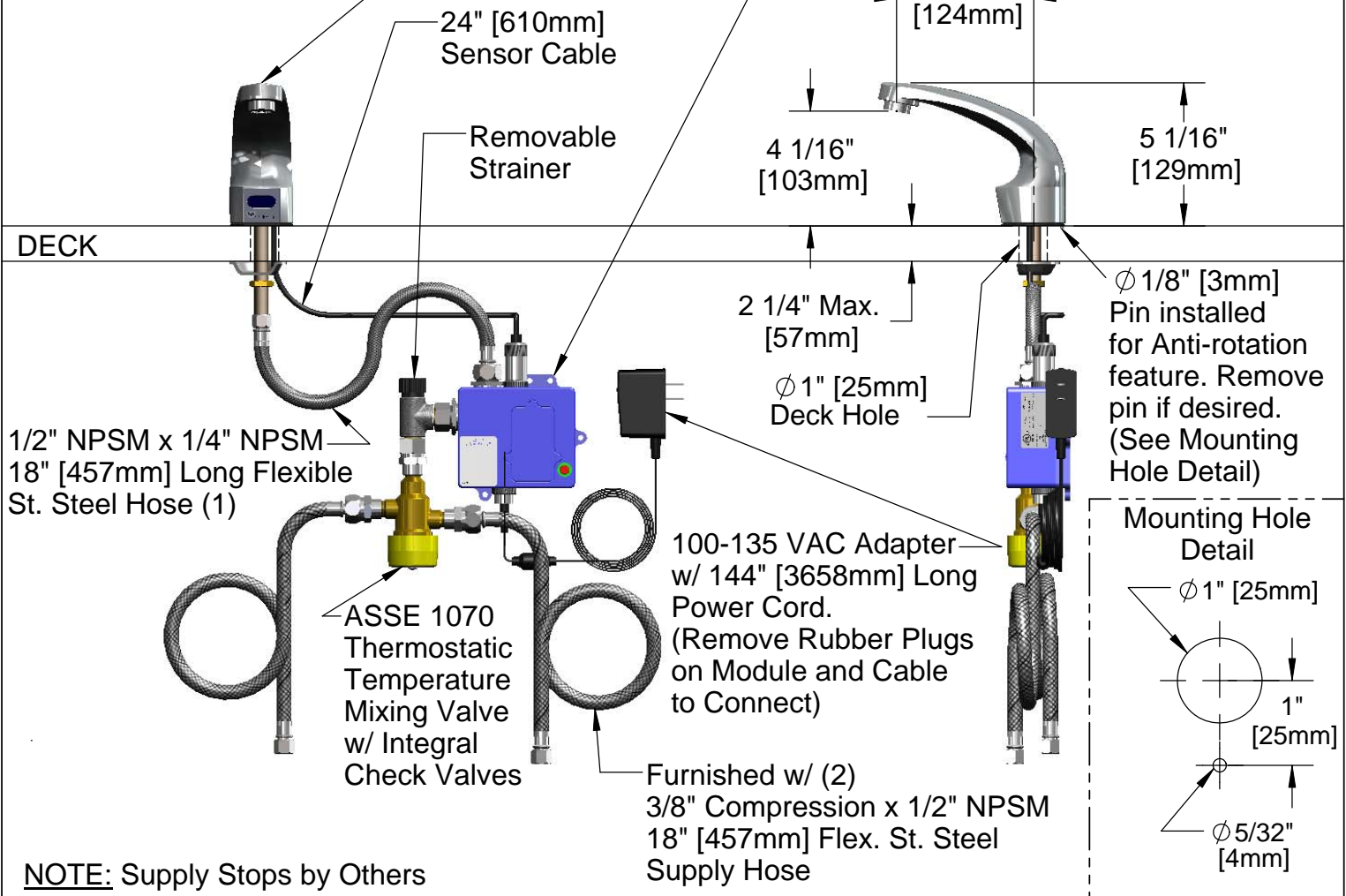


**ADA Compliant**



Solid Cast Brass Spout  
w/ Polish Chrome Plated Finish  
and 2.2 GPM [8.3L/min]  
Vandal Resistant Aerator

3 5/8" x 4 3/16" x 2" Deep  
[92mm x 106mm x 51mm]  
Water Resistant Control Module Box (Blue)  
w/ Internal Flow Control Setting Switches,  
AC or DC operated w/ (4) AA  
Batteries



**NOTE:** Supply Stops by Others

Product Specifications: **Chrome Plated Brass Electronic Faucet:**  
Single Hole Deck Mt. Spout w/ VR Aerator, AC/DC Control  
Module w/ Internal Flow Cont. | Setting Switches, Thermostatic  
Temperature Control Mixing Valve w/ Integral Check Valves,  
18" Long Hot & Cold Supply Stop Flexible Connector Hoses

Drawn GEF	Checked DMH	Approved JHB
Scale: NTS	Date: 08/23/10	



**T&S BRASS AND BRONZE WORKS, INC.**

2 Saddleback Cove / P.O. Box 1088  
Travelers Rest, SC 29690



REG. #A2601  
ISO #9001

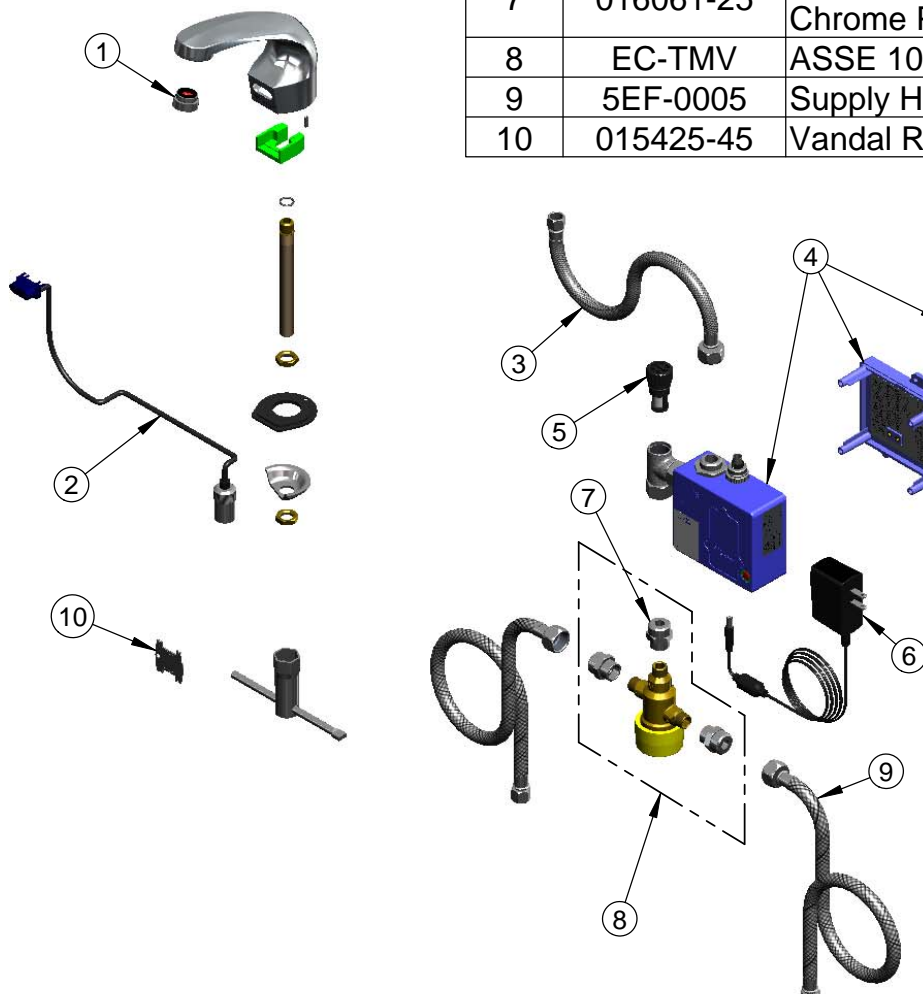
Model No.

**EC-3102-TMV**

Item No.

Travelers Rest, SC: 800-476-4103 Simi Valley, CA: 800-423-0150 Fax: 864-834-3518 www.tsbrass.com

ITEM NO.	SALES NO.	DESCRIPTION
1	016355-45	Aerator w/ Key, Vandal Resistant, 2.2 GPM, 13/16-27 male
2	017195-45	Angled Sensor w/ Cable
3	016297-45	Inlet Hose, Faucet, 1/2" NPSM-F x 1/4" NPSM-F
4	016647-45	ChekPoint Electronic Module (Blue)
5	EC-FILTER	Replacement Filter
6	5EF-0002	A/C Transformer
7	016061-25	Adapter 9/16-24UN Female x 1/2-14NPSM Male Chrome Plated
8	EC-TMV	ASSE 1070 Thermostatic Mixing Valve
9	5EF-0005	Supply Hose, 9/16-24 Female x 1/2" NPSM
10	015425-45	Vandal Resistant Key



Label for Flow Control Switch Settings is located on Inside of Back Cover.

Flow Control Switches are located inside Module Housing in Black Box next to Battery Compartment.  
\*Switches are set to DEFAULT position:  
Auto Time Out = 10 seconds  
Shut Off Delay = 1 second  
Auto Flush = OFF

Remove (4) screws and back cover to access switches.

\*Available Water Flow Control Selections:  
(6) Auto Time Out Selections - 10 sec, 25 sec, 45 sec, 60 sec, 3 min, 20 min  
(4) Shut Off Delay Selections - 1 sec, 2 sec, 4 sec, 10 sec  
Auto Flush for 30 Seconds After Every 12 Inactive Hours - ON or OFF

Product Specifications: <b>Chrome Plated Brass Electronic Faucet:</b> Single Hole Deck Mt. Spout w/ VR Aerator, AC/DC Control Module w/ Internal Flow Cont.I Setting Switches, Thermostatic Temperature Control Mixing Valve w/ Integral Check Valves, 18" Long Hot & Cold Supply Stop Flexible Connector Hoses	Drawn	Checked	Approved
	GEF	DMH	JHB
	Scale:	Date:	
	NTS	08/23/10	