



# T&S BRASS AND BRONZE WORKS, INC.

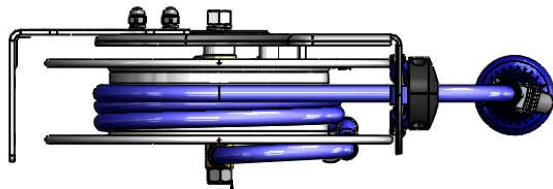
2 Saddleback Cove / P.O. Box 1088  
Travelers Rest, SC 29690

Model No.

**B-7132-08M**

Item No.

Travelers Rest, SC: 800-476-4103 • Simi Valley, CA: 800-423-0150 • Fax: 864-834-3518 • www.tsbrass.com



3/8" NPT Female Inlet  
(Left Side of Reel)

This Space for Architect/Engineer Approval

Job Name \_\_\_\_\_ Date \_\_\_\_\_

Model Specified \_\_\_\_\_ Quantity \_\_\_\_\_

Customer/Wholesaler \_\_\_\_\_

Contractor \_\_\_\_\_

Architect/Engineer \_\_\_\_\_

Open Stainless Steel Hose Reel;  
35 Ft. of 3/8" Hose

Ø 14 1/2"  
[368mm]

18"  
[458mm]

019652-40  
3/8" NPT  
Live Swivel

B-0108  
1.07 GPM  
Spray Valve

7 3/16"  
[182mm]



## Mounting Hole Details

5 1/2"  
[139mm]

Ø 1/2"  
[13mm]

6 7/16"  
[164mm]

5 1/4"  
[133mm]

3/4"  
[19mm]

1/2"  
[13mm]

2 3/8"  
[60mm]

## Product Specifications:

3/8" x 35 Ft. Open Stainless Steel Reel w/ 1.07 GPM Spray Valve & Swivel

## Product Compliance:

NSF 61 Exempt (Non-Potable)  
EPA 2005 Non-Compliant (PRSV)



# T&S BRASS AND BRONZE WORKS, INC.

2 Saddleback Cove / P.O. Box 1088  
Travelers Rest, SC 29690

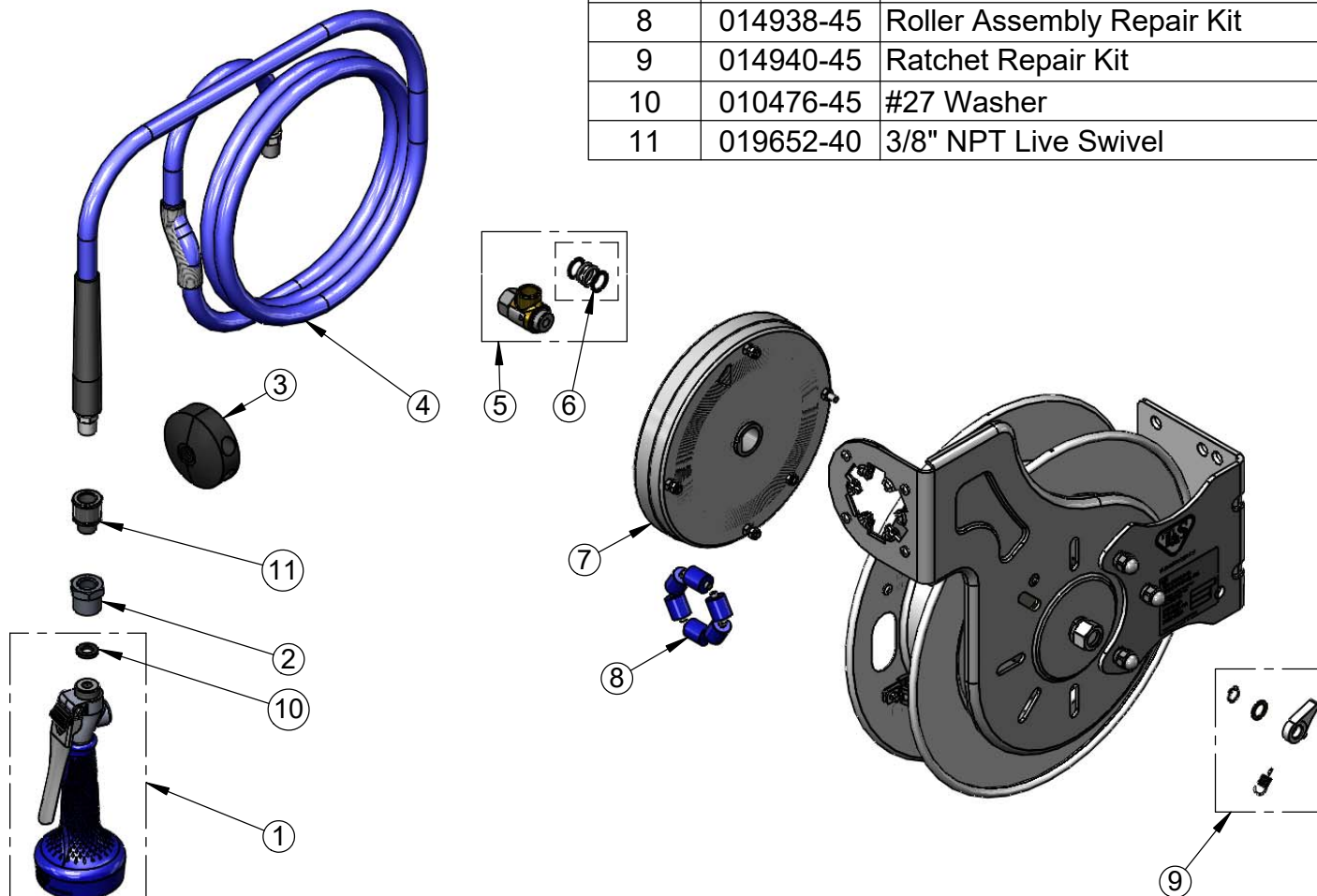
Model No.

**B-7132-08M**

Item No.

Travelers Rest, SC: 800-476-4103 • Simi Valley, CA: 800-423-0150 • Fax: 864-834-3518 • www.tsbrass.com

ITEM NO.	SALES NO.	DESCRIPTION
1	B-0108	1.07 GPM B-0108 Spray Valve
2	016154-25	B-0108 3/8" NPT Hose Adapter
3	014949-45	Hose Stop Repair Kit
4	014941-45	3/8" x 35' Hose Replacement Kit
5	014946-45	3/8" Swivel Repair Kit
6	014948-45	O-Ring Replacement Kit
7	014933-45	Small SS Spring Assembly
8	014938-45	Roller Assembly Repair Kit
9	014940-45	Ratchet Repair Kit
10	010476-45	#27 Washer
11	019652-40	3/8" NPT Live Swivel



## Product Specifications:

3/8" x 35 Ft. Open Stainless Steel Reel w/ 1.07 GPM Spray Valve & Swivel

## Product Compliance:

NSF 61 Exempt (Non-Potable)  
EPA 2005 Non-Compliant (PRSV)

Drawn: JRM

Checked: KJG

Approved: JHB

Date: 02/28/18

Scale: NTS

Sheet: 2 of 2