



T&S BRASS AND BRONZE WORKS, INC.

2 Saddleback Cove / P.O. Box 1088
Travelers Rest, SC 29690



REG. #A2601
ISO #9001

Model No.

B-0710-WS

Item No.

Travelers Rest, SC: 800-476-4103 Simi Valley, CA: 800-423-0150 Fax: 864-834-3518 www.tsbrass.com

This Space for Architect/Engineer Approval

Job Name _____ Date _____

Model Specified _____ Quantity _____

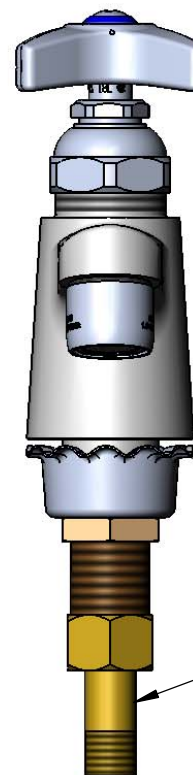
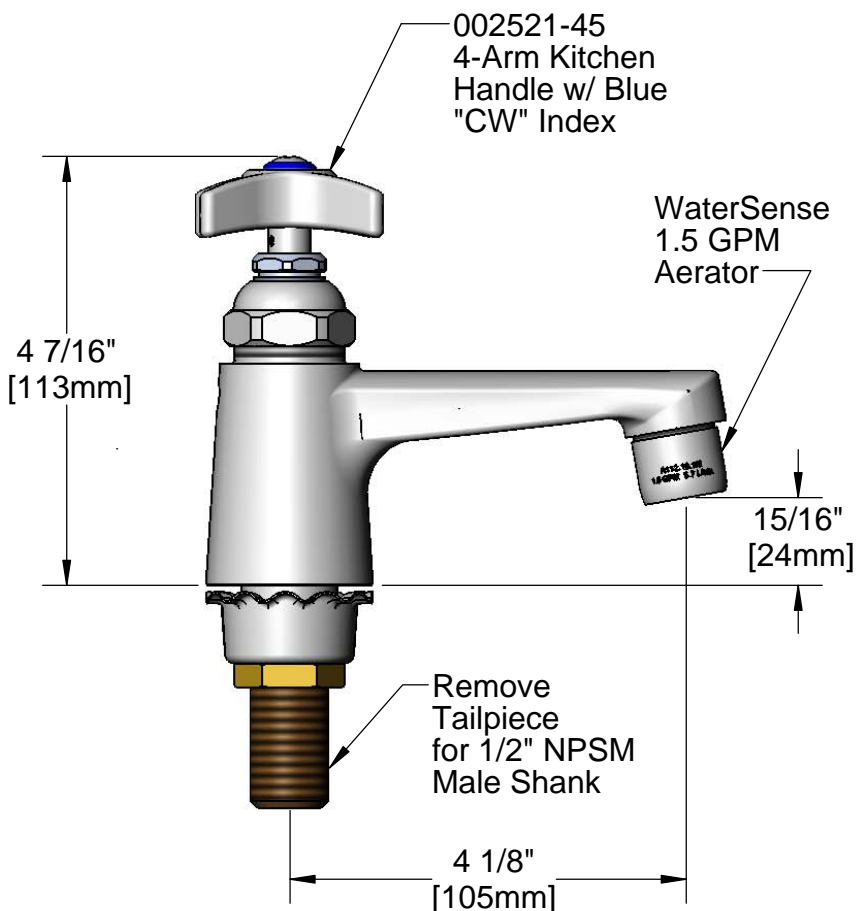
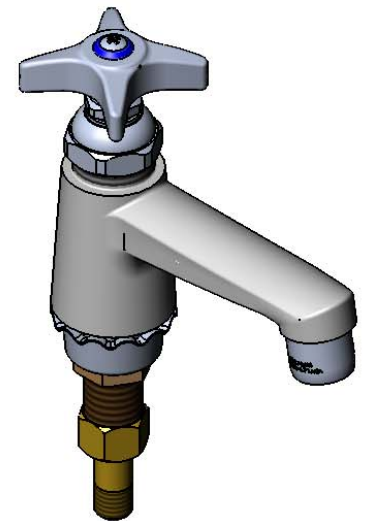
Customer/Wholesaler _____

Contractor _____

Architect/Engineer _____



ADA Compliant



Rough-in: ϕ 1-1/8" [28mm] Hole

Product Specifications:

Single Temperature Basin Faucet w/ 1/2" NPSM Male Shank,
4-Arm Kitchen Handle, and 1.5 GPM Aerator

Drawn KJG	Checked GEF	Approved JHB
Scale: 1:2	Date: 06/16/11	



T&S BRASS AND BRONZE WORKS, INC.

2 Saddleback Cove / P.O. Box 1088
Travelers Rest, SC 29690



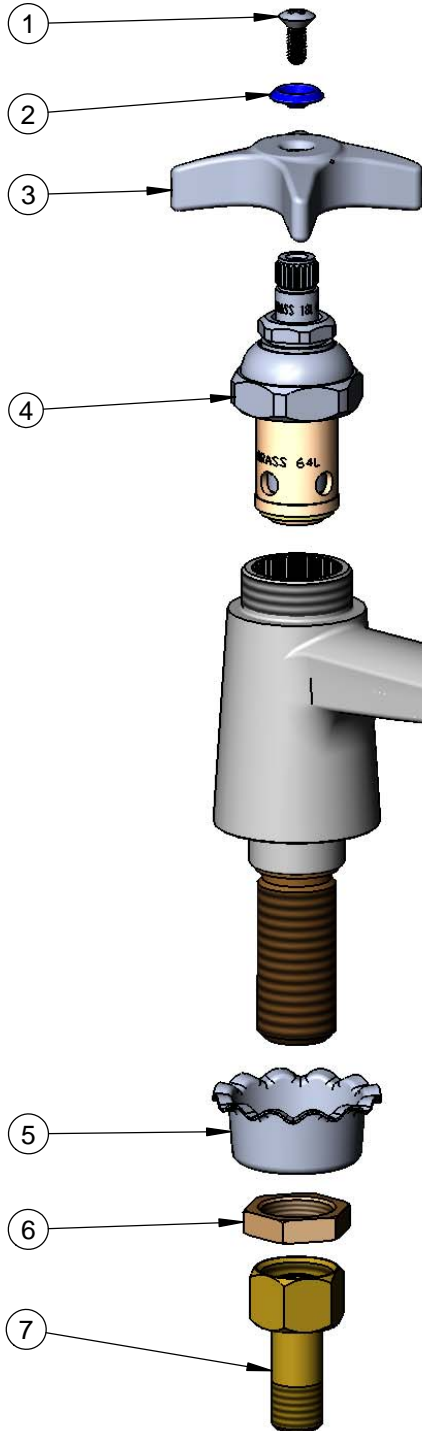
REG. #A2601
ISO #9001

Model No.

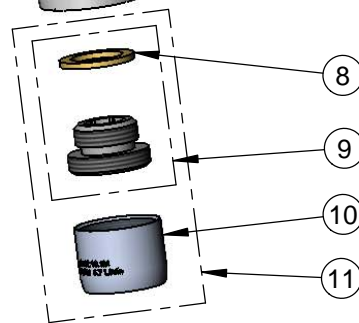
B-0710-WS

Item No.

Travelers Rest, SC: 800-476-4103 Simi Valley, CA: 800-423-0150 Fax: 864-834-3518 www.tsbrass.com



ITEM NO.	SALES NO.	DESCRIPTION
1	000922-45	Lever Handle Screw
2	001660-45	Blue Index-CW
3	002521-45	4-Arm Handle
4	005960-40	Hot Eterna RTC
5	001000-45	Rosette Washer
6	002954-45	Shank Lock Nut
7	150A	Bag of (1) Nut & (1) Tailpiece
8	001043-45	Washer
9	044A	3/8" to Aerator Adapter
10	B-0199-01-WS	1.5 GPM Aerator, 55/64-27 Female
11	B-0199-02-WS	1.5 GPM Aerator, 3/8" NPSM Male



Product Specifications:

Single Temperature Basin Faucet w/ 1/2" NPSM Male Shank,
4-Arm Kitchen Handle, and 1.5 GPM Aerator

Drawn KJG	Checked GEF	Approved JHB
Scale: 1:2		Date: 06/16/11