

T&S BRASS AND BRONZE WORKS, INC.

2 Saddleback Cove / P.O. Box 1088
Travelers Rest, SC 29690

Model No.

B-0300-WH4

Item No.

Travelers Rest, SC: 800-476-4103 • Simi Valley, CA: 800-423-0150 • Fax: 864-834-3518 • www.tsbrass.com



ADA Compliant

This Space for Architect/Engineer Approval

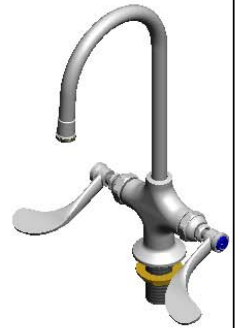
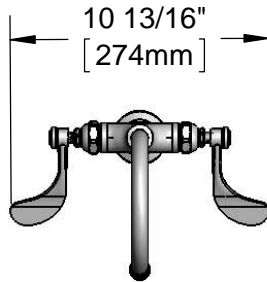
Job Name _____ Date _____

Model Specified _____ Quantity _____

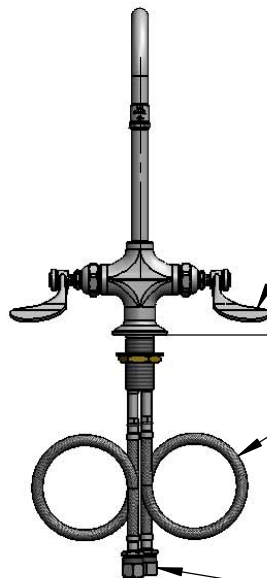
Customer/Wholesaler _____

Contractor _____

Architect/Engineer _____



120X
Rigid Gooseneck
w/ Stream Regulator Outlet



Eterna Cartridges &
4" Wrist Action Handles
w/ Color Coded Indexes

Mounting Surface

18" Flexible
Stainless Steel
Supply Hoses

Compression Fittings
for 5/8" O.D. Copper Tubing
(Remove Compression Nut
for 1/2" NPSM Male)

5 1/2"
[140mm]

8 9/16"
[218mm]

13 5/8"
[346mm]

1 3/8" [38mm]
Maximum
Thickness

Ø 2 1/4"
[57mm]
Base

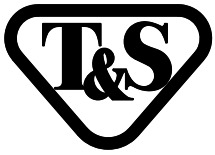
Rough-In Requirement:
Ø 1 1/2" [38mm] Mounting Hole

Product Specifications:

Single Hole Deck Mount Mixing Faucet w/ Eterna Cartridges,
Rigid Gooseneck w/ Stream Regulator Outlet, 4" Wrist Action Handles,
& 18" Flexible Stainless Steel Supply Hoses w/ 1/2" NPT Male Inlets

Product Compliance:

ASME A112.18.1 / CSA B125.1
NSF 61 - Section 9
NSF 372 (Low Lead Content)
ANSI A117.1 (ADA)



T&S BRASS AND BRONZE WORKS, INC.

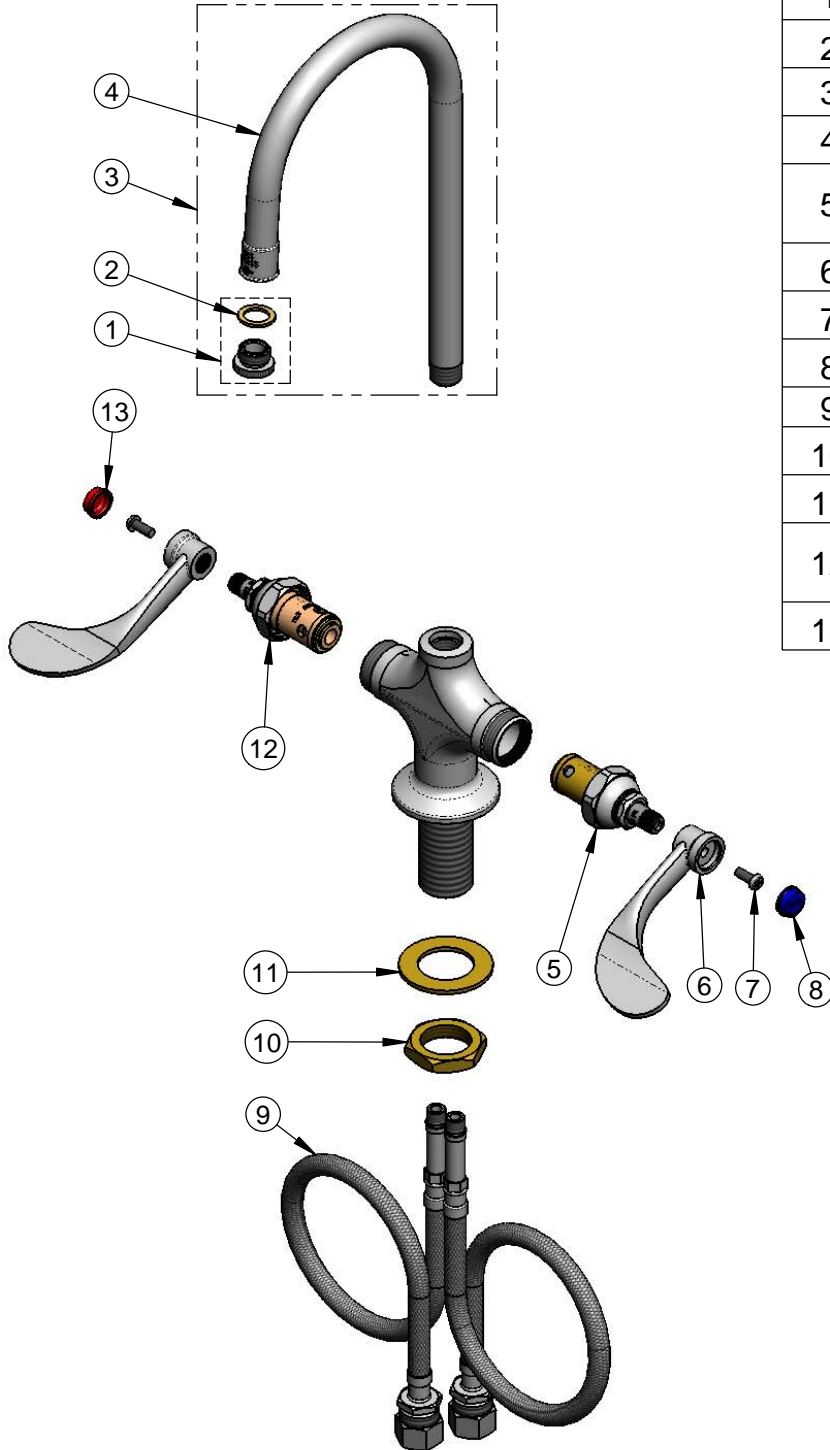
2 Saddleback Cove / P.O. Box 1088
Travelers Rest, SC 29690

Model No.

B-0300-WH4

Item No.

Travelers Rest, SC: 800-476-4103 • Simi Valley, CA: 800-423-0150 • Fax: 864-834-3518 • www.tsbrass.com



ITEM NO.	SALES NO.	DESCRIPTION
1	B-LT	Stream Regulator Outlet
2	001043-45	Washer
3	120X	Rigid Gooseneck
4	000398-40	Rigid Gooseneck
5	006009-40	Eterna Cartridge LTC w/ Teflon Seat
6	B-WH4	4" Wrist Action Handle
7	000925-45	Lab Handle Screw
8	001686-45	Blue Index - CW
9	012534-45	18" Flexible Supply Hose (2)
10	000965-45	Lock Nut
11	002290-45	Lock Washer
12	006010-40	Eterna Cartridge RTC w/ Teflon Seat
13	001194-45	Red Index - HW

Product Specifications:

Single Hole Deck Mount Mixing Faucet w/ Eterna Cartridges,
Rigid Gooseneck w/ Stream Regulator Outlet, 4" Wrist Action Handles,
& 18" Flexible Stainless Steel Supply Hoses w/ 1/2" NPT Male Inlets

Product Compliance:

ASME A112.18.1 / CSA B125.1
NSF 61 - Section 9
NSF 372 (Low Lead Content)
ANSI A117.1 (ADA)