

This Space for Architect/Engineer Approval

Job Name _____ Date _____
 Model Specified _____ Quantity _____
 Customer/Wholesaler _____
 Contractor _____
 Architect/Engineer _____

Universal EasyInstall
 Stainless Steel Wall Mount
 Swing Bracket w/ 100° Rotation

B-0963
 Continuous Pressure
 Vacuum Breaker w/
 Integral Check Valve

Stainless Steel
 Quick Disconnect

3/8" NPT x 36"
 Flexible Water
 Connector

3/8" NPT x 40"
 Riser

(2) 013716-40
 Wall Brackets

2 3/4"
 [70mm]

Ø 2" [51mm]
 Flanges w/
 1/2" NPT
 Female Inlets
 & In-Line
 Check Valves

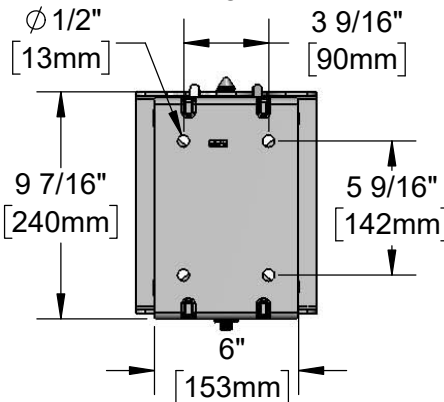
Adjustable From
 7 3/4" to 8 1/4"
 [197mm to 210mm]

8" Wall Mount
 Mixing Faucet,
 Quarter-Turn
 Ceramic Cartridges
 & equip Lever Handles
 w/ Color Coded Indexes

Black Powder Coated Hose Reel
 w/ 50' of Ø 3/8" Hose

5SV-WH
 High Flow
 Spray Valve

Mounting Details



44 15/16"
 [1141mm]

2 3/8"
 [60mm]

Model Number

5HR-242-01WE1

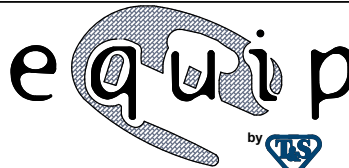
Product Specifications:

Open Epoxy Coated Steel Hose Reel w/ 50' of 3/8" Hose,
 High Flow Spray Valve, Vacuum Breaker, 3/8" NPT Flexible
 Water Hose, 8" Wall Mount Mixing Faucet w/ In-Line Check Valves,
 1/2" NPT Female Inlets, (2) Wall Brackets, Universal Swing Bracket

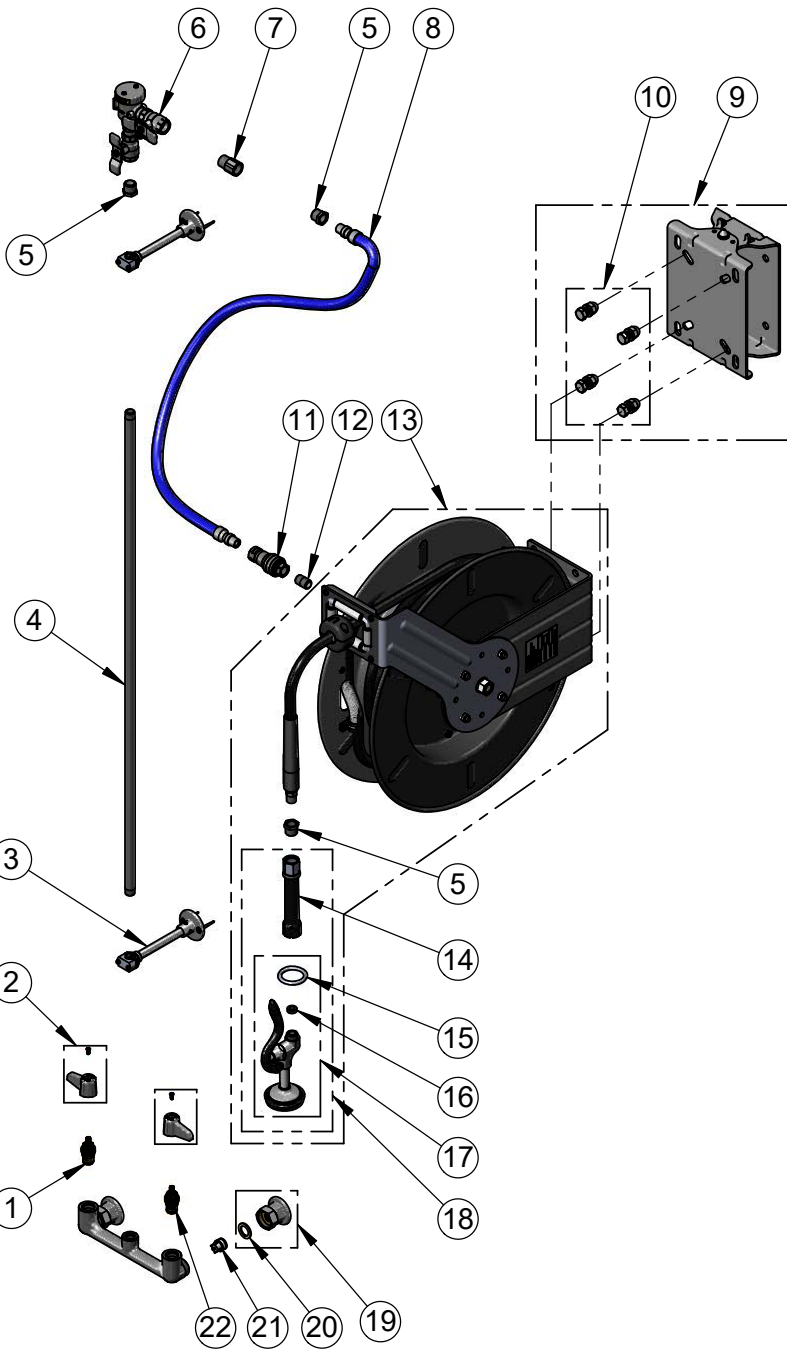
Product Compliance:

NSF 61 Exempt (Non-Potable)
 2019 DOE PRSV Non-Compliant
 ASSE 1056 (VB)

equip
 Foodservice
 Accessories



2 Saddleback Cove, P.O. Box 1088
 Travelers Rest, South Carolina 29690
 Phone: 800.891.4808 Fax: 800.868.0084
 equip.tsbrass.com



| ITEM NO. | SALES NO. | DESCRIPTION |
|----------|------------|---|
| 1 | 013787-45 | equip Ceramic Cartridge, RTC |
| 2 | 5-HDL-L | equip Lever Handle w/ Color Coded Screws |
| 3 | 013716-40 | 6" Wall Bracket |
| 4 | 002558-40 | 3/8" NPT x 40" Riser |
| 5 | 001359-40 | Hex Bushing, 1/2" NPT Male x 3/8" NPT Female |
| 6 | B-0963 | Continuous Pressure VB w/ Integral Check Valve |
| 7 | 015073-40 | Check Valve w/ 1/2" NPT Adapter |
| 8 | HW-2B-36 | 3/8" NPT x 36" Flexible Water Hose |
| 9 | G019430-45 | Universal EasyInstall Stainless Steel Swing Bracket |
| 10 | 019191-45K | Hose Reel Bracket Mounting Kit |
| 11 | AW-5B | 3/8" NPT Quick Disconnect |
| 12 | 002535-25 | 3/8" Close Nipple |
| 13 | 5HR-242-01 | 50' of 3/8" equip Open Coated Hose Reel |
| 14 | 5HR-HDL | Hose Reel Grip Handle |
| 15 | 000907-45 | Spray Valve Hold Down Ring |
| 16 | 010476-45 | #27 Washer |
| 17 | 5SV-H | High Flow Spray Valve |
| 18 | 5SV-WH | High Flow Spray Valve, Handle, & Ring |
| 19 | 00AA | 1/2" NPT Female Inlet Flange |
| 20 | 001019-45 | Coupling Nut Washer |
| 21 | 013840-45 | 20mm Check Valve |
| 22 | 013788-45 | equip Ceramic Cartridge, LTC |

Model Number

5HR-242-01WE1

Product Specifications:

Open Epoxy Coated Steel Hose Reel w/ 50' of 3/8" Hose, High Flow Spray Valve, Vacuum Breaker, 3/8" NPT Flexible Water Hose, 8" Wall Mount Mixing Faucet w/ In-Line Check Valves, 1/2" NPT Female Inlets, (2) Wall Brackets, Universal Swing Bracket

Product Compliance:

NSF 61 Exempt (Non-Potable)
2019 DOE PRSV Non-Compliant
ASSE 1056 (VB)

equip
Foodservice
Accessories



2 Saddleback Cove, P.O. Box 1088
Travelers Rest, South Carolina 29690
Phone: 800.891.4808 Fax: 800.868.0084
equip.tsbrass.com